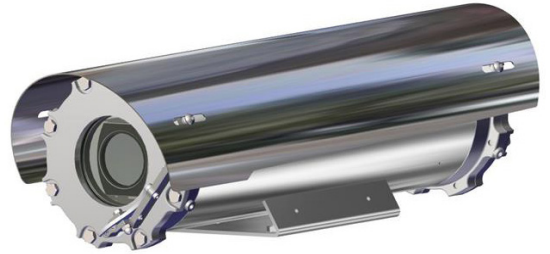


- **INNOVATIVE PRODUCT, BEST IN CLASS TECHNOLOGY**
- CLASS1/DIV1 EXPLOSIONPROOF CAMERA FOR HAZARDOUS LOCATIONS
- AISI316L STAINLESS STEEL CONSTRUCTION
- CERTIFICATION TEMPERATURE -76°F +176°F
- 5MP CAMERA, H.265, 2.7-12MM MOTORIZED VARIFOCAL
- EDGE RECORDING
- OPTIONAL WINDOW WIPER
- IP68/69, NEMA 4X
- OPTIONAL BUILT-IN FIBER MEDIA CONVERTER
- OPTIONAL BUILT-IN IP OVER COAXIAL CONVERTER
- OPTIONAL BUILT-IN 120VAC POWER SUPPLY
- CYBER SECURITY FEATURES
- NDAA COMPLIANT



TECHNICAL SPECIFICATIONS

GENERAL & MECHANICAL

Dimensions	See dimensions drawings
Operating Temperature	-60° +60°C, +75°C peak (-76°F +140°F, +167°F peak)
Construction	AISI316L Stainless Steel
Finish	Electro-polished
Mounting	4x M5 on 101,6 PCD 4x M6 on 90x130
Cable entries	2xM25x1.5 and 2x 3/4in (adapter)
Wiper	Optional
Weight	Unit: 23lb / Package: 26lb (version with wiper)

ELECTRICAL

Temperature Climatization	T[°C] ON = 54 ±7°F (12 ± 4°C) T[°C] OFF = 68°F ± 5°F (20 ± 3°C)
Available voltages	24VAC, 120VAC (+/-10%) 24VDC or PoE available on request
Power consumption	40W MAX

CERTIFICATIONS

Ingress Protection	EN 60529 (IP68/IP69), NEMA 4X
Rating	Class I, Division 1, Groups A, B, C and D T5/T4 -50°C ≤ Tamb ≤ +60°C/80°C (only for Canada) Class I, Division 1, Groups B, C and D T5/T4 -25°C ≤ Tamb ≤ +60°C/80°C (for US/Canada) Class II/III, Division 1, Groups E, F and G T5/T4 -40°C ≤ Tamb ≤ +60°C/80°C (for US/Canada)
North American Standards	FM Class 3615; FM Class 3810; ANSI/UL 61010-1; ANSI/UL 60079-0; ANSI/UL 60079-1; ANSI/ISA 60079-31; ANSI/UL 50E; ANSI/IEC 60529 CSA C22.2 No. 0.4; CSA C22.2 No. 0.5; CAN/CSA C22.2 No. 61010-1; CAN/CSA-C22.2 No. 60079-0; CAN/CSA-C22.2 No. 60079-1; CAN/CSA-C22.2 No. 60079-31; CSA C22.2 No. 94.2; CAN/CSA C22.2 No. 60529
EMC	EN 55035; EN/IEC 61000-6-4; EN/IEC 61000-3-2; EN/IEC 61000-3-3; EN/IEC 61000-6-2; CISPR-32; CISPR-35
LVD	EN/IEC 62368-1
RoHS	2011/65/EU + 2015/863/EU (RoHS 3)
WEEE	2012/19/EU

VIDEO/CAMERA

Sensor	1/2.7" Progressive CMOS, 5MP
Resolution	- Up to 2720x1976, 5MP (H.264/H.265) - Up to 1920x1080, 2MP (MJPEG)
Compression	H.265/H.264/MJPEG
Streaming	Up to 4 configurable streams
Frame Rate	- 2MP: 60fps (WDR off), 30 fps (WDR on) - 5MP: 30fps (H.264/H.265)
Sensitivity	Color: 0.11 lux, B/W: 0.023 lux
Shutter Speed	1~1/10000 s
Optical Filter	Automatically removable IR-cut filter

INNOVATIVE EXPLOSIONPROOF FIXED CAMERA STATION

White Balance	Contrast White Balance
Dynamic range	WDR/HDR
Lens	2.7-12mm Motorized Varifocal, 10x Digital Zoom, F1.6
FOV	Horizontal: 102.1° (Wide), 31.5° (Tele) Vertical: 70.3° (Wide), 22.7° (Tele)
Analytics	Motion Detection/Tampering OPTIONAL: Face Detection/Tracking/Recognition, LPR Detection/Recognition, People Counting, Human/Vehicle Classification, Object Classification/Recognition
Image settings	Color, Brightness, Sharpness, Contrast White Balance, Exposure Control 2DNR, 3DNR, NR by Motion Masking, Text Overlay
Event Triggers	External Input, Analytics, Network Failure Detection, Periodical Event, Manual Trigger
Event Actions	External output Activation Video recording to edge storage File Upload : FTP, network share and email Notification : HTTP, FTP, email
Edge Recording	microSD/microSDHC/microSDXC card (card not provided)
Network Storage	Support for recording to NAS
SNR	>50dB
Noise Reduction	2D/3D, NR by motion
Iris	P-Iris

NETWORK

Interface	100BASE-TX or 100BASE-FX/1000BASE-X (fiber)
Security	User Authentication/ HTTPS/ IP Filter/ IEEE 802.1x/SNMPv3
ONVIF	ONVIF profile S/T/G/M
Protocols	ARP, PPPoE, IPv4/v6, ICMP, IGMP, QoS, TCP, UDP, DHCP, UPnP, SNMP, SMTP, RTP, RTSP, HTTP, HTTPS, FTP, NTP, DDNS

FIBER MEDIA CONVERTER

Interface	100 Base-FX/1000BASE-X
Cabling	Singlemode (9/125 μm) /two fibers/SC connector
Maximum Distance	20km
Wavelength	1310 nm

IP OVER COAXIAL CONVERTER

Interface	10/100 Base-TX over Coaxial Cable
Bandwidth	Up to 95Mbps downlink/uplink
Maximum Distance	1800m
Technology	Broadband over Power Lines (BPL)
Interference Prevention	IEEE 1901-2010 Inter-System Protocol ISP

MODELS

TXFUS2TV10-IP-M	New Generation Explosionproof FIXED IP camera station 5MP 2.7-12mm, 120VAC
TXFUS1TV10-IP-M	New Generation Explosionproof FIXED IP camera station 5MP 2.7-12mm, 24VAC
TXFUS2TV10-SM-M	New Generation Explosionproof FIXED IP camera station 5MP 2.7-12mm, with SM FO media converter, 120VAC
TXFUS1TV10-SM-M	New Generation Explosionproof FIXED IP camera station 5MP 2.7-12mm, with SM FO media converter, 24VAC
TXFUS2TV10W-IP-M	New Generation Explosionproof FIXED IP camera station 5MP 2.7-12mm, wiper, 120VAC
TXFUS1TV10W-IP-M	New Generation Explosionproof FIXED IP camera station 5MP 2.7-12mm, wiper, 24VAC
TXFUS2TV10W-SM-M	New Generation Explosionproof FIXED IP camera station 5MP 2.7-12mm, wiper and SM FO media converter, 120VAC
TXFUS1TV10W-SM-M	New Generation Explosionproof FIXED IP camera station 5MP 2.7-12mm, wiper and SM FO media converter, 24VAC

- for IP over COAXIAL converter replace the suffix "IP" with "CX"

- All the above models include sunshield and heater

ACCESSORIES

SSBK-M	Wall mounting bracket
SSPM-M	Pole mount adapter for SSBK-M
SSPTM-M	Top pole mount adapter
SSDM-M	Adapter to pair with IR LED illuminator on a single SSBK-M bracket

DIMENSIONS

