

## TXFUSTB SERIES

INNOVATIVE EXPLOSIONPROOF NEXT FIXED CAMERA STATION

HAZARDOUS AREA

POWERED BY



- **INNOVATIVE PRODUCT, BEST IN CLASS TECHNOLOGY**
- CLASS1/DIV1 EXPLOSIONPROOF CAMERA FOR HAZARDOUS LOCATIONS
- AISI316L STAINLESS STEEL CONSTRUCTION
- INTEGRATED BOSCH DINION IP STARLIGHT CAMERA AND VARIFOCAL LENS
- EDGE RECORDING
- OPTIONAL WINDOW WIPER
- IP68/69, NEMA 4X
- OPTIONAL BUILT-IN FIBER MEDIA CONVERTER
- OPTIONAL BUILT-IN IP OVER COAXIAL CONVERTER
- OPTIONAL BUILT-IN 120VAC POWER SUPPLY
- BVMS COMPATIBLE



### TECHNICAL SPECIFICATIONS

#### GENERAL & MECHANICAL

<b>Dimensions</b>	See dimensions drawings
<b>Operating Temperature</b>	CANADA: -40°C +60°C, +75°C peak (-40°F +140°F, +167°F peak) USA: -25°C +60°C, +75°C peak (-13°F +140°F, +167°F peak)
<b>Construction</b>	AISI316L Stainless Steel
<b>Finish</b>	Electro-polished
<b>Mounting</b>	4x M5 on 101,6 PCD 4x M6 on 90x130
<b>Cable entries</b>	2xM25x1.5 and 2x 3/4in (adapter)
<b>Wiper</b>	Optional
<b>Weight</b>	Unit: 28lb / Package: 31lb (version with wiper)

#### ELECTRICAL

<b>Temperature Climatization</b>	T[°C] ON = 54 ± 7°F (12 ± 4°C) T[°C] OFF = 68°F ± 5°F (20 ± 3°C)
<b>Available voltages</b>	24VAC, 120VAC (+/-10%) 24VDC or PoE available on request
<b>Power consumption</b>	40W MAX

#### CERTIFICATIONS

<b>Ingress Protection</b>	IP66/IP67/IP68/IP69 (EN 60529), NEMA 4X
<b>IK Classification</b>	IK10 on all sides except for the front glass, which is rated IK08
<b>Rating</b>	Class I, Division 1, Groups A, B, C and D T6/T5/T4 -50°C ≤ Tamb ≤ +60°C/75°C/80°C (only for Canada) Class I, Division 1, Groups B, C and D T5/T4 -25°C ≤ Tamb ≤ +60°C/75°C/80°C (only for US) Class II/III, Division 1, Groups E, F and G T5/T4 -40°C ≤ Tamb ≤ +60°C/80°C (for US/Canada) Class I Zone 1, AEx db IIC T6/T5/T4 Gb Ta=-50°C to +60°C/+75°C/+80°C Class I Zone 21, AEx tb IIIC T85°C/T100°C/T135°C Gb Ta=-50°C to +60°C/+75°C/+80°C
<b>North American Standards</b>	FM 3600; FM 3615; FM 3616; FM 3810; ANSI/UL 50E; ANSI/UL 60079-0; ANSI/UL 60079-1; ANSI/UL 60079-31; ANSI/IEC 60529; ANSI/UL 61010-1 CSA C22.2 No. 0.4; CSA C22.2 No. 0.5; CSA C22.2 No. 25; CSA C22.2 No. 30; CSA C22.2 No. 94; CSA C22.2 No. 60079-0; CSA C22.2 No. 60079-1; CSA C22.2 No. 60079-31; CSA C22.2 No. 60529; CSA C22.2 No. 61010-1
<b>EMC</b>	EN 55032; EN 55035; EN/IEC 61000-3-2; EN/IEC 61000-3-3; EN/IEC 61000-6-2; EN/IEC 61000-6-4; CISPR-32; CISPR-35
<b>LVD</b>	EN/IEC 62368-1
<b>RoHS</b>	2011/65/EU + 2015/863/EU (RoHS 3)
<b>WEEE</b>	2012/19/EU

## INNOVATIVE EXPLOSIONPROOF NEXT FIXED CAMERA STATION

### CAMERA

LENS MODEL	DINION IP Starlight CAMERA SERIES		
	6000 HD (6)	7000 HD (7)	8000 HD (8)
<b>LVF-5003C-P2713 (A)</b>	6A	7A	/
<b>LVF-5005C-S4109 (D)</b>	6D	7D	8D

To order the camera and lens to be integrated in the housing, please specify the related number (C-camera series) and letter (L-lens model) in the ordering code (see MODELS).

Example: For the housing with integrated DINION IP Starlight 7000 HD (7) and LVF- S4109 (D) the ordering code is: TXFTB7Dxxxxxx

(\*) for more updated information pls visit original web site of camera manufacturer

### FIBER MEDIA CONVERTER

<b>Interface</b>	100 Base-FX/1000BASE-X
<b>Cabling</b>	Singlemode (9/125 μm) /two fibers/SC connector
<b>Maximum Distance</b>	20km
<b>Wavelength</b>	1310 nm

### IP OVER COAXIAL CONVERTER

<b>Interface</b>	10/100 Base-TX over Coaxial Cable
<b>Bandwidth</b>	Up to 95Mbps downlink/uplink
<b>Maximum Distance</b>	1800m
<b>Technology</b>	Broadband over Power Lines (BPL)
<b>Interference Prevention</b>	IEEE 1901-2010 Inter-System Protocol ISP

### MODELS

<b>TXFUS2TBxy-IP-M</b>	New Generation Explosionproof FIXED IP camera station with Bosch Dinion, 120VAC
<b>TXFUS1TBxy-IP-M</b>	New Generation Explosionproof FIXED IP camera station with Bosch Dinion, 24VAC
<b>TXFUS2TBxyW-IP-L</b>	New Generation Explosionproof FIXED IP camera station with Bosch Dinion, wiper, 120VAC
<b>TXFUS1TBxyW-IP-L</b>	New Generation Explosionproof FIXED IP camera station with Bosch Dinion, wiper, 24VAC

- X: 6 = Dinion 6000, 7 = Dinion 7000, 8 = Dinion 8000

- Y: A = LVF-5003C-P2713 Lens, D = LVF-5005C-S4109 lens

- for fiber media converter replace the suffix "IP" with "SM"; ex. TXF2TBxy-SM

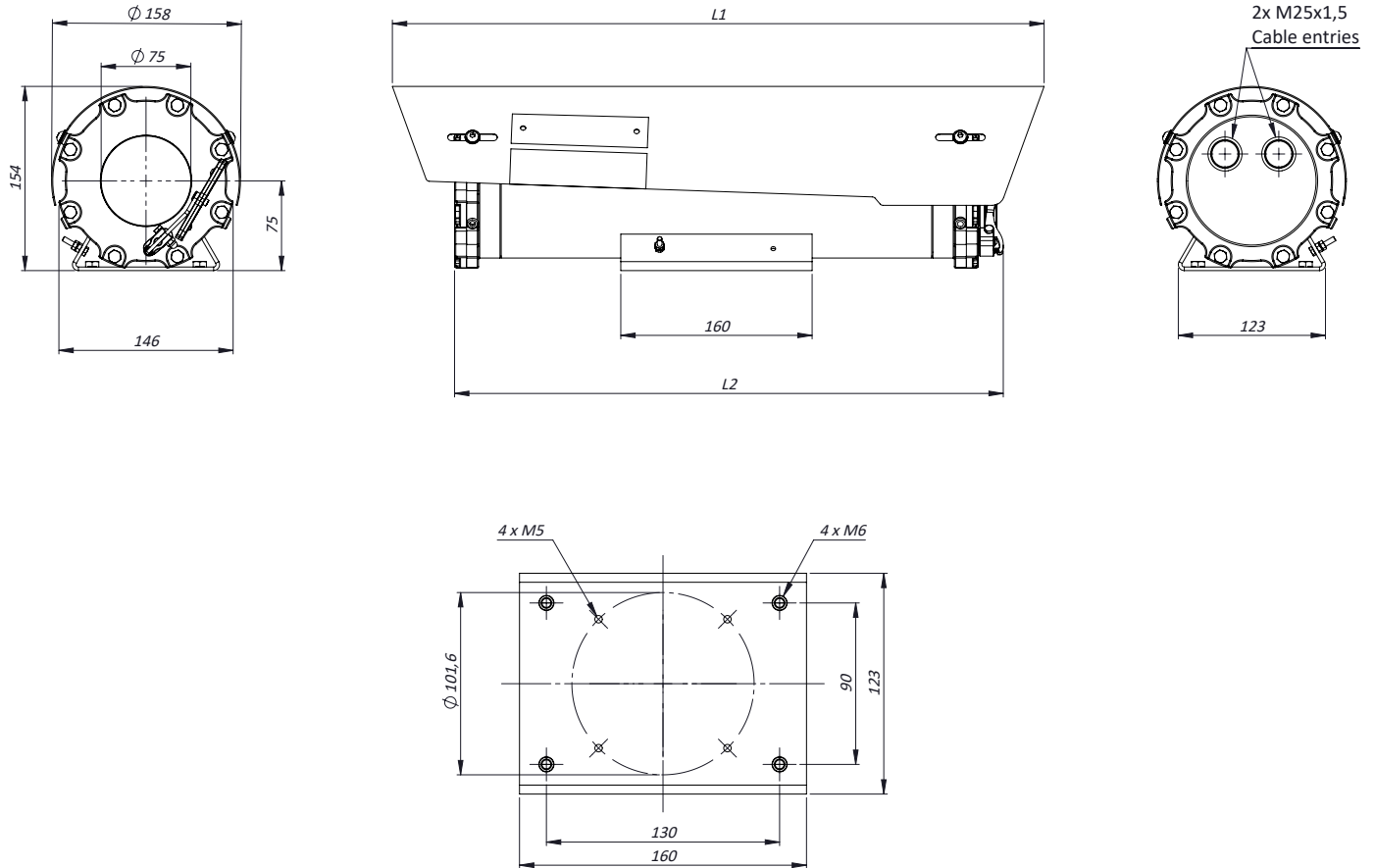
- for IP over COAXIAL converter replace the suffix "IP" with "CX"; ex. TXF2TBxy-CX

- All the above models include sunshield and heater

### ACCESSORIES

<b>SSBK-M</b>	Wall mounting bracket
<b>SSPM-M</b>	Pole mount adapter for SSBK-M
<b>SSPTM-M</b>	Top pole mount adapter
<b>SSDM-M</b>	Adapter to pair with IR LED illuminator on a single SSBK-M bracket

## DIMENSIONS



### MAX EXTERNAL LENGTH

Model	L1 [mm]	L2 [mm]
TXFTBxy-IP-M	545	439
TXFTBxy-IP-L	685	579
TXFTBxyW-IP-M	545	460
TXFTBxyW-IP-L	685	600

*This is only an example of integration of Bosch Dinion cameras in Tecnovideo products.  
Bosch Trademark and company logos, marks, product names and emblems are registered trademarks and belong to Robert Bosch GmbH.*

Dimensions in millimetres - Tolerances according QMS - Design and products specifications subject to change without notice - rev. 20250423