

- **INNOVATIVE PRODUCT, BEST IN CLASS TECHNOLOGY**
- CLASS1/DIV1 EXPLOSIONPROOF CAMERA FOR HAZARDOUS LOCATIONS
- AISI316L STAINLESS STEEL CONSTRUCTION
- CERTIFICATION TEMPERATURE -76°F +176°F
- POWERED BY AVIGILON 2.0C-H5A-B1, DAY/NIGHT FULL HD, 8X OPTICAL ZOOM
- EDGE RECORDING
- OPTIONAL WINDOW WIPER
- IP68/69, NEMA 4X
- OPTIONAL BUILT-IN FIBER MEDIA CONVERTER
- OPTIONAL BUILT-IN IP OVER COAXIAL CONVERTER
- OPTIONAL BUILT-IN 120VAC POWER SUPPLY"



## TECHNICAL SPECIFICATIONS

### GENERAL & MECHANICAL

<b>Dimensions</b>	See dimensions drawings
<b>Operating Temperature</b>	-30° +60°C, +75°C peak (-22°F +140°F, +167°F peak)
<b>Construction</b>	AISI316L Stainless Steel
<b>Finish</b>	Electro-polished
<b>Mounting</b>	4x M5 on 101,6 PCD 4x M6 on 90x130
<b>Cable entries</b>	2xM25x1.5 and 2x 3/4in (adapter)
<b>Wiper</b>	Optional
<b>Weight</b>	Unit: 23lb / Package: 26lb (version with wiper)

### ELECTRICAL

<b>Temperature Climatization</b>	T[°C] ON = 54 ±7°F (12 ± 4°C) T[°C] OFF = 68°F ± 5°F (20 ± 3°C)
<b>Available voltages</b>	24VAC, 120VAC (+/-10%) 24VDC or PoE available on request
<b>Power consumption</b>	40W MAX

### CERTIFICATIONS

<b>Ingress Protection</b>	EN 60529 (IP68/IP69), NEMA 4X
<b>Rating</b>	Class I, Division 1, Groups A, B, C and D T5/T4 -50°C ≤ Tamb ≤ +60°C/80°C (only for Canada) Class I, Division 1, Groups B, C and D T5/T4 -25°C ≤ Tamb ≤ +60°C/80°C (for US/Canada) Class II/III, Division 1, Groups E, F and G T5/T4 -40°C ≤ Tamb ≤ +60°C/80°C (for US/Canada)
<b>North American Standards</b>	FM Class 3615; FM Class 3810; ANSI/UL 61010-1; ANSI/UL 60079-0; ANSI/UL 60079-1; ANSI/ISA 60079-31; ANSI/UL 50E; ANSI/IEC 60529 CSA C22.2 No. 0.4; CSA C22.2 No. 0.5; CAN/CSA C22.2 No. 61010-1; CAN/CSA-C22.2 No. 60079-0; CAN/CSA-C22.2 No. 60079-1; CAN/CSA-C22.2 No. 60079-31; CSA C22.2 No. 94.2; CAN/CSA C22.2 No. 60529
<b>EMC</b>	EN 55035; EN/IEC 61000-6-4; EN/IEC 61000-3-2; EN/IEC 61000-3-3; EN/IEC 61000-6-2; CISPR-32; CISPR-35
<b>LVD</b>	EN/IEC 62368-1
<b>RoHS</b>	2011/65/EU + 2015/863/EU (RoHS 3)
<b>WEEE</b>	2012/19/EU

INNOVATIVE EXPLOSIONPROOF FIXED CAMERA STATION

**VIDEO/CAMERA**

<b>Sensor</b>	1/2.8" progressive scan CMOS
<b>Resolution</b>	1920x1080
<b>Compression</b>	H.264 HDSM SmartCodec, H.265 HDSM SmartCodec, Motion JPEG
<b>Streaming</b>	Multi-stream H.264, Multi-stream H.265, Motion JPEG
<b>Frame Rate</b>	(50 Hz/60 Hz): 25 fps/30 fps
<b>Sensitivity</b>	0.039 lux in color mode, 0.02 lux in monochrome mode
<b>Shutter Speed</b>	Automatic, Manual (1/7 to 1/8196 sec)
<b>White Balance</b>	Automatic, Manual
<b>Dynamic range</b>	WDR
<b>Lens</b>	18x Autofocus Optical Zoom, 4.7-84.6mm
<b>FOV</b>	Horizontal: 60° (Wide), 4.1° (Tele) Vertical: 34° (Wide), 2.3° (Tele)
<b>Analytics</b>	NEXT-GENERATION VIDEO ANALYTICS: Expanded object classifications and more accurate detection in crowded scenes so you can detect and act faster.
<b>Event Triggers</b>	Analytics, Tamper Detection, Objects in Area, Object Loitering, Objects Crossing Beam, Object Appears or Enters Area, Direction Violated
<b>Edge Recording</b>	microSD/microSDHC/microSDXC slot
<b>Noise Reduction</b>	3D Noise Reduction
<b>Iris</b>	Automatic, Open, Closed

(\*) for more updated information pls visit original web site of camera manufacturer

**NETWORK**

<b>Interface</b>	100BASE-TX, RJ45 Connector, CAT5e Cabling
<b>Security</b>	Password protection, HTTPS encryption, digest authentication, WS authentication, user access log, 802.1x port based authentication
<b>ONVIF</b>	ONVIF compliance version 1.02, 2.00, Profile S, Profile T, Profile G
<b>Protocols</b>	IPv6, IPv4, HTTP, HTTPS, SOAP, DNS, NTP, RTSP, RTP, TCP, UDP, IGMP, ICMP, DHCP, Zeroconf, ARP, RTP/UDP, RTP/UDP multicast, RTP/RTSP/TCP, RTP/RTSP/HTTP/TCP, RTP/RTSP/HTTPS/TCP, HTTP, SNMP v2c, SNMP v3

(\*) for more updated information pls visit original web site of camera manufacturer

**FIBER MEDIA CONVERTER**

<b>Interface</b>	100 Base-FX/1000BASE-X
<b>Cabling</b>	Singlemode (9/125 μm) /two fibers/SC connector
<b>Maximum Distance</b>	20km
<b>Wavelength</b>	1310 nm

**IP OVER COAXIAL CONVERTER**

<b>Interface</b>	10/100 Base-TX over Coaxial Cable
<b>Bandwidth</b>	Up to 95Mbps downlink/uplink
<b>Maximum Distance</b>	1800m
<b>Technology</b>	Broadband over Power Lines (BPL)
<b>Interference Prevention</b>	IEEE 1901-2010 Inter-System Protocol ISP

**MODELS**

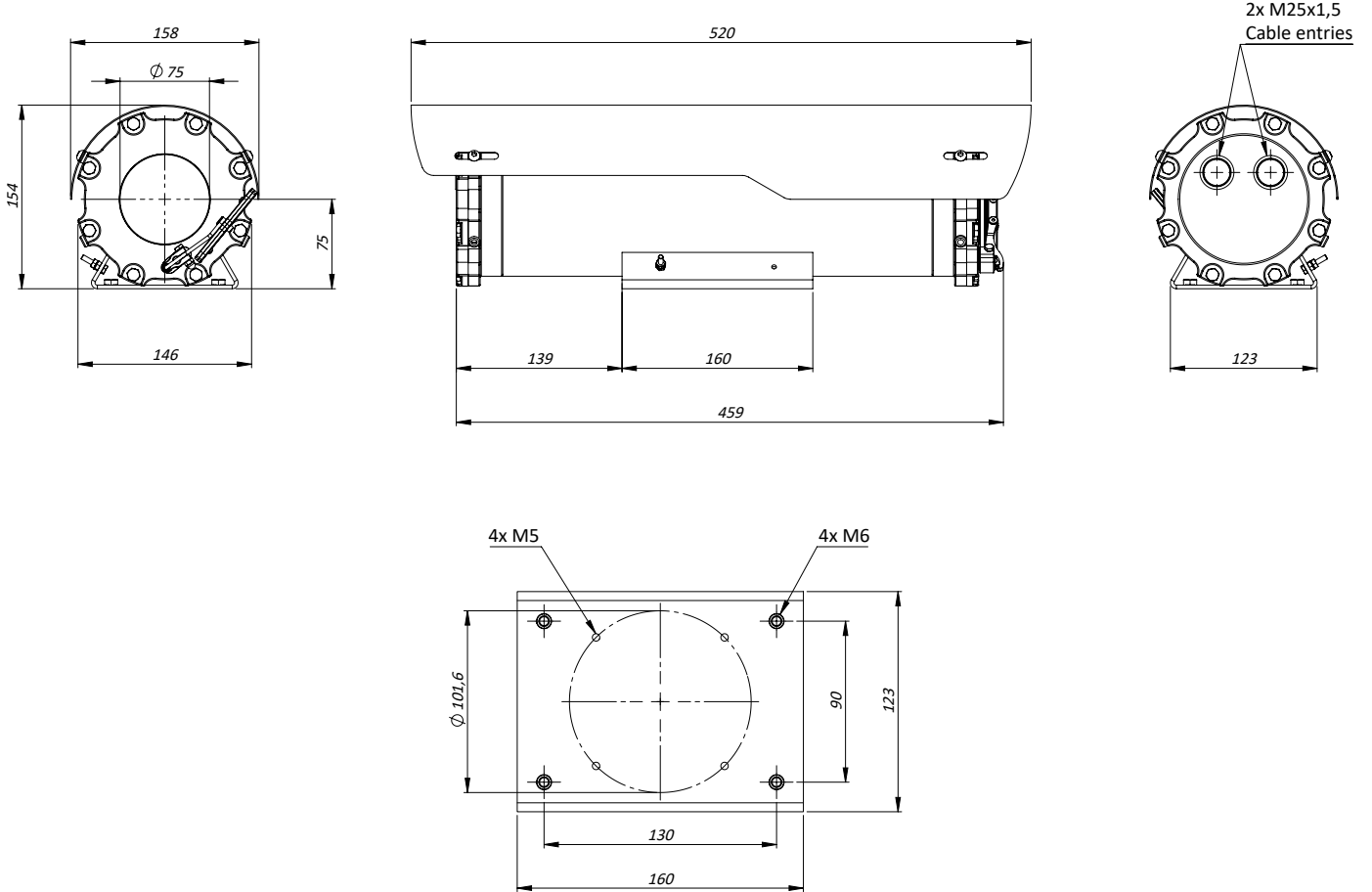
<b>TXFUS2TA01-IP-M</b>	New Generation Explosionproof FIXED IP camera station with AVIGILON 2.0C-H5A-B1, 120VAC
<b>TXFUS1TA01-IP-M</b>	New Generation Explosionproof FIXED IP camera station with AVIGILON 2.0C-H5A-B1, 24VAC
<b>TXFUS2TA01W-IP-M</b>	New Generation Explosionproof FIXED IP camera station with AVIGILON 2.0C-H5A-B1, wiper, 120VAC
<b>TXFUS1TA01W-IP-M</b>	New Generation Explosionproof FIXED IP camera station with AVIGILON 2.0C-H5A-B1, wiper, 24VAC

- for fiber media converter replace the suffix "IP" with "SM"  
- for IP over COAXIAL converter replace the suffix "IP" with "CX"  
- All the above models include sunshield and heater

**ACCESSORIES**

<b>SSBK-M</b>	Wall mounting bracket
<b>SSPM-M</b>	Pole mount adapter for SSBK-M
<b>SSPTM-M</b>	Top pole mount adapter
<b>SSDM-M</b>	Adapter to pair with IR LED illuminator on a single SSBK-M bracket

DIMENSIONS



*This is only an example of integration of Avigilon camera in Tecnovideo products.  
Avigilon Trademark and company logos, marks, product names and emblems are registered trademarks and belong to Avigilon Corporation.*

Dimensions in millimetres - Tolerances according QMS - Design and products specifications subject to change without notice - rev. 20240424