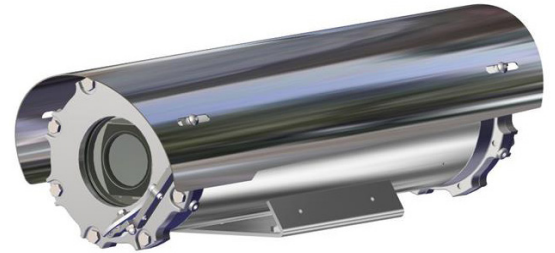


- **INNOVATIVE PRODUCT, BEST IN CLASS TECHNOLOGY**
- ATEX/IECEX/UKCA/INMETRO EXPLOSIONPROOF CAMERA FOR HAZARDOUS LOCATIONS
- AISI316L STAINLESS STEEL CONSTRUCTION
- CERTIFICATION TEMPERATURE -60°C +80°C
- 5MP CAMERA, H.265, 2.7-12MM MOTORIZED VARIFOCAL
- EDGE RECORDING
- OPTIONAL WINDOW WIPER
- IP66/67/68/69, NEMA 4X
- OPTIONAL BUILT-IN FIBER MEDIA CONVERTER
- OPTIONAL BUILT-IN IP OVER COAXIAL CONVERTER
- OPTIONAL BUILT-IN 120VAC OR 230VAC POWER SUPPLY
- H2-READY
- CYBER SECURITY FEATURES
- NDAA COMPLIANT



TECHNICAL SPECIFICATIONS

GENERAL & MECHANICAL

Dimensions	See dimensions drawings
Operating Temperature	-60° +60°C, +75°C peak (-76°F +140°F, +167°F peak)
Construction	AISI316L Stainless Steel
Finish	Electro-polished
Mounting	4x M5 on 101,6 PCD 4x M6 on 90x130
Cable entries	2x M25 x1,5
Wiper	Optional
Weight	Unit: 10.5 Kg / Package: 12 Kg (version with wiper)

ELECTRICAL

Temperature Climatization	T[°C] ON = 12 ± 4°C, T[°C] OFF = 20 ± 3°C
Available voltages	24VAC, 120VAC, 230VAC (+/-10%) 24VDC or PoE available on request
Power consumption	40W MAX

CERTIFICATIONS

Ingress Protection	EN 60529 (IP66/IP67/IP68/IP69), NEMA 4X
Rating	II 2 G Ex db IIC T6/5/4 Gb -60°C ≤ Tamb ≤ +60/75/80°C II 2 D Ex tb IIIC T85/100/135°C Db -60°C ≤ Tamb ≤ +60/75/80°C
ATEX/UKCA Standards	EN 60079-0; EN 60079-1; EN 60079-31
IECEX Standards	IEC 60079-0; IEC 60079-1; IEC 60079-31
INMETRO Standards	ABNT NBR IEC 60079-0; ABNT NBR IEC 60079-1; ABNT NBR IEC 60079-31
EMC	EN 55032; EN 55035; EN/IEC 61000-3-2; EN IEC 61000-3-3; EN IEC 61000-6-2; EN IEC 61000-6-4; CISPR 32; CISPR 35
LVD	EN/IEC 62368-1
RoHS	2011/65/EU + 2015/863/EU (RoHS 3)
WEEE	2012/19/EU

VIDEO/CAMERA

Sensor	1/2.7" Progressive CMOS, 5MP
Resolution	- Up to 2720x1976, 5MP (H.264/H.265) - Up to 1920x1080, 2MP (MJPEG)
Compression	H.265/H.264/MJPEG
Streaming	Up to 4 configurable streams
Frame Rate	- 2MP: 60fps (WDR off), 30 fps (WDR on) - 5MP: 30fps (H.264/H.265)
Sensitivity	Color: 0.11 lux, B/W: 0.023 lux
Shutter Speed	1~1/10000 s
Optical Filter	Automatically removable IR-cut filter
White Balance	Contrast White Balance
Dynamic range	WDR/HDR
Lens	2.7-12mm Motorized Varifocal, 10x Digital Zoom, F1.6
Analytics	Motion Detection/Tampering OPTIONAL: Face Detection/Tracking/Recognition, LPR Detection/Recognition, People Counting, Human/Vehicle Classification, Object Classification/Recognition
Image settings	Color, Brightness, Sharpness, Contrast White Balance, Exposure Control 2DNR, 3DNR, NR by Motion Masking, Text Overlay
Event Triggers	External Input, Analytics, Network Failure Detection, Periodical Event, Manual Trigger
Event Actions	External output Activation Video recording to edge storage File Upload : FTP, network share and email Notification : HTTP, FTP, email
Edge Recording	microSD/microSDHC/microSDXC card (card not provided)
Network Storage	Support for recording to NAS
SNR	>50dB
Noise Reduction	2D/3D, NR by motion
Iris	P-Iris

INNOVATIVE EXPLOSIONPROOF FIXED CAMERA STATION

NETWORK

Interface	100BASE-TX or 100BASE-FX/1000BASE-X (fiber)
Security	User Authentication/ HTTPS/ IP Filter/ IEEE 802.1x/ SNMPv3
ONVIF	ONVIF profile G/S/T/M compliant
Protocols	ARP, PPPoE, IPv4/v6, ICMP, IGMP, QoS, TCP, UDP, DHCP, UPnP, SNMP, SMTP, RTP, RTSP, HTTP, HTTPS, FTP, NTP, DDNS

FIBER MEDIA CONVERTER

Interface	100 Base-FX/1000BASE-X
Cabling	Singlemode (9/125 μm) /two fibers/SC connector
Maximum Distance	20km
Wavelength	1310 nm

IP OVER COAXIAL CONVERTER

Interface	10/100 Base-TX over Coaxial Cable
Bandwidth	Up to 95Mbps downlink/uplink
Maximum Distance	1800m
Technology	Broadband over Power Lines (BPL)
Interference Prevention	IEEE 1901-2010 Inter-System Protocol ISP

MODELS

TXF1TV10-IP-M	New Generation Explosionproof FIXED IP camera station 5MP 2.7-12mm, 24VAC
TXF2TV10-IP-M	New Generation Explosionproof FIXED IP camera station 5MP 2.7-12mm, 120VAC
TXF3TV10-IP-M	New Generation Explosionproof FIXED IP camera station 5MP 2.7-12mm, 230VAC
TXF1TV10-SM-M	New Generation Explosionproof FIXED IP camera station 5MP 2.7-12mm, with SM FO media converter, 24VAC
TXF2TV10-SM-M	New Generation Explosionproof FIXED IP camera station 5MP 2.7-12mm, with SM FO media converter, 120VAC
TXF3TV10-SM-M	New Generation Explosionproof FIXED IP camera station 5MP 2.7-12mm, with SM FO media converter, 230VAC
TXF1TV10W-IP-M	New Generation Explosionproof FIXED IP camera station 5MP 2.7-12mm, wiper, 24VAC
TXF2TV10W-IP-M	New Generation Explosionproof FIXED IP camera station 5MP 2.7-12mm, wiper, 120VAC
TXF3TV10W-IP-M	New Generation Explosionproof FIXED IP camera station 5MP 2.7-12mm, wiper, 230VAC
TXF1TV10W-SM-M	New Generation Explosionproof FIXED IP camera station 5MP 2.7-12mm, wiper and SM FO media converter, 24VAC
TXF2TV10W-SM-M	New Generation Explosionproof FIXED IP camera station 5MP 2.7-12mm, wiper and SM FO media converter, 120VAC
TXF3TV10W-SM-M	New Generation Explosionproof FIXED IP camera station 5MP 2.7-12mm, wiper and SM FO media converter, 230VAC

- for IP over COAXIAL converter replace the suffix "IP" with "CX"
- All the above models include sunshield and heater

PRE-ASSEMBLED CABLE TAILS

EXACCTF3-A	3 meters armored composite cable tail (power, Ethernet, data) with 2x M25 barrier nickel plated brass glands
EXACCTF3-C	3 meters armored composite cable tail (power, data, fiber optic) with 2x M25 barrier nickel plated brass glands. Fiber termination: SC
EXACCTF5-A	5 meters armored composite cable tail (power, Ethernet, data) with 2x M25 barrier nickel plated brass glands
EXACCTF5-C	5 meters armored composite cable tail (power, data, fiber optic) with 2x M25 barrier nickel plated brass glands. Fiber termination: SC
EXACCTF10-A	10 meters armored composite cable tail (power, Ethernet, data) with 2x M25 barrier nickel plated brass glands
EXACCTF10-C	10 meters armored composite cable tail (power, data, fiber optic) with 2x M25 barrier nickel plated brass glands. Fiber termination: SC

ACCESSORIES

SSBK-M	Wall mounting bracket
SSPM-M	Pole mount adapter for SSBK-M
SSPTM-M	Top pole mount adapter
SSDM-M	Adapter to pair with IR LED illuminator on a single SSBK-M bracket

DIMENSIONS

