

# TECNOVIDEO

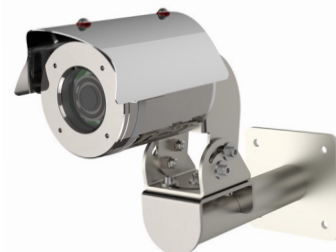
CCTV SYSTEMS AND ACCESSORIES

## NEXT COMPACT POE

INNOVATIVE EXPLOSIONPROOF BULLET CAMERA

HAZARDOUS AREA

- **INNOVATIVE PRODUCT, BEST IN CLASS TECHNOLOGY**
- POE COMPACT DESIGN
- ATEX/IECEX/UKCA/INMETRO EXPLOSIONPROOF CAMERA FOR HAZARDOUS LOCATIONS
- AISI316L STAINLESS STEEL CONSTRUCTION
- 5MP CAMERA, H.265, 2.7-12MM MOTORIZED VARIFOCAL
- WALL MOUNT INCLUDED
- EDGE RECORDING
- IP66/67/68/69
- H2-READY
- CYBER SECURITY FEATURES
- NDAA COMPLIANT



### TECHNICAL SPECIFICATIONS

#### GENERAL & MECHANICAL

<b>Dimensions</b>	See dimensions drawings
<b>Operating Temperature</b>	-10°C, + 60°C, +75°C peak
<b>Construction</b>	AISI316L Stainless Steel
<b>Finish</b>	Electro-polished
<b>Mounting</b>	See dimensions drawings
<b>Cable entries</b>	1x M25 x1,5
<b>Wiper</b>	No
<b>Weight</b>	Unit: 5.5 Kg / Package: 7 Kg

#### ELECTRICAL

<b>Available voltages</b>	PoE (IEEE 802.3af)
<b>Power consumption</b>	5W MAX

#### CERTIFICATIONS

<b>Ingress Protection</b>	EN 60529 (IP66/IP67/IP68/IP69)
<b>Rating</b>	II 2 G Ex db IIC T6/5 Gb -60°C ≤ Tamb ≤ +65/75°C II 2 D Ex tb IIIC T85/100°C Db -60°C ≤ Tamb ≤ +65/75°C
<b>ATEX/UKCA Standards</b>	EN 60079-0; EN 60079-1; EN 60079-31
<b>IECEX Standards</b>	IEC 60079-0; IEC 60079-1; IEC 60079-31
<b>INMETRO Standards</b>	ABNT NBR IEC 60079-0, ABNT NBR IEC 60079-1, ABNT NBR IEC 60079-31
<b>EMC</b>	EN 55032; EN 55035; EN/IEC 61000-3-2; EN IEC 61000-3-3; EN IEC 61000-6-2; EN IEC 61000-6-4; CISPR 32; CISPR 35
<b>LVD</b>	EN/IEC 62368-1
<b>RoHS</b>	2011/65/EU + 2015/863/EU (RoHS 3)
<b>WEEE</b>	2012/19/EU

#### VIDEO/CAMERA

<b>Sensor</b>	1/2.7" Progressive CMOS, 5MP
<b>Resolution</b>	- Up to 2720x1976, 5MP (H.264/H.265) - Up to 1920x1080, 2MP (MJPEG)
<b>Compression</b>	H.265/H.264/MJPEG
<b>Streaming</b>	Up to 4 configurable streams
<b>Frame Rate</b>	- 2MP: 60fps (WDR off), 30 fps (WDR on) - 5MP: 30fps (H.264/H.265)
<b>Sensitivity</b>	Color: 0.11 lux, B/W: 0.023 lux
<b>Shutter Speed</b>	1~1/10000 s
<b>Optical Filter</b>	Automatically removable IR-cut filter
<b>White Balance</b>	Contrast White Balance
<b>Dynamic range</b>	WDR/HDR
<b>Lens</b>	2.7-12mm Motorized Varifocal, 10x Digital Zoom, F1.6
<b>FOV</b>	Horizontal: 102.1° (Wide), 31.5° (Tele) Vertical: 70.3° (Wide), 22.7° (Tele)
<b>Analytics</b>	Motion Detection/Tampering OPTIONAL: Face Detection/Tracking/Recognition, LPR Detection/Recognition, People Counting, Human/Vehicle Classification, Object Classification/Recognition
<b>Image settings</b>	Color, Brightness, Sharpness, Contrast White Balance, Exposure Control 2DNR, 3DNR, NR by Motion Masking, Text Overlay
<b>Event Triggers</b>	Analytics, Network Failure Detection, Periodical Event, Manual Trigger
<b>Event Actions</b>	File Upload : FTP, network share and email Notification : HTTP, FTP, email
<b>Edge Recording</b>	microSD/microSDHC/microSDXC card (card not provided)
<b>Network Storage</b>	support for recording to NAS
<b>SNR</b>	>50dB
<b>Noise Reduction</b>	2D/3D, NR by motion
<b>Iris</b>	P-Iris

[www.tecnovideoctv.com](http://www.tecnovideoctv.com)

Tecnovideo S.r.l. - Via A. De Gasperi, 3 36030 Villaverla (VI) ITALY - Tel. +39.0445.350444 - [info@tecnovideoctv.com](mailto:info@tecnovideoctv.com)

## INNOVATIVE EXPLOSIONPROOF BULLET CAMERA

**NETWORK**

<b>Interface</b>	100BASE-TX or 100BASE-FX/1000BASE-X (fiber)
<b>Security</b>	User Authentication/ HTTPS/ IP Filter/ IEEE 802.1x/SNMPv3
<b>ONVIF</b>	ONVIF profile S/T/G/M
<b>Protocols</b>	ARP, PPPoE, IPv4/v6, ICMP, IGMP, QoS, TCP, UDP, DHCP, UPnP, SNMP, SMTP, RTP, RTSP, HTTP, HTTPS, FTP, NTP, DDNS

**MODELS**

<b>TXC8TV10-IP-S</b>	New Generation Stainless Steel FIXED IP 5MP 2.7-12mm camera station, 2-axis mounting bracket, PoE
----------------------	---

**CABLE TAILS**

<b>EXAECT3-A</b>	3 meters armoured Ethernet cable tail (CAT6A) with 2x M25 barrier nickel plated brass glands.
<b>EXAECT5-A</b>	5 meters armoured Ethernet cable tail (CAT6A) with 2x M25 barrier nickel plated brass glands.
<b>EXAECT10-A</b>	10 meters armoured Ethernet cable tail (CAT6A) with 2x M25 barrier nickel plated brass glands.

**ACCESSORIES**

<b>SSPM-S</b>	Pole mount adapter
<b>SSBKCLN-XS</b>	Ceiling mount bracket for TXC Series

## DIMENSIONS

