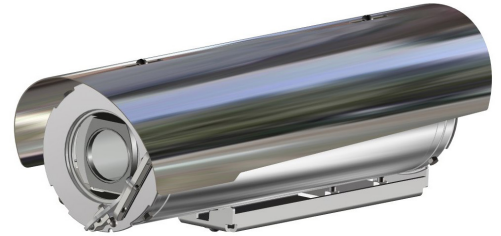


TSFTV2 SERIES

INNOVATIVE STAINLESS STEEL INNO FIXED CAMERA STATION

SAFE AREA

- **INNOVATIVE PRODUCT, BEST IN CLASS TECHNOLOGY**
- AISI316L STAINLESS STEEL CONSTRUCTION
- OPERATING TEMPERATURE -60°C +60°C (+75°C PEAK)
- 3MP CAMERA, H.265, 40X AUTOFOCUS OPTICAL ZOOM
- EIS ELECTRONIC IMAGE STABILIZER
- EDGE RECORDING
- OPTIONAL WINDOW WIPER
- IP66/67
- OPTIONAL BUILT-IN FIBER MEDIA CONVERTER
- OPTIONAL BUILT-IN IP OVER COAXIAL CONVERTER
- OPTIONAL BUILT-IN 120VAC OR 230VAC POWER SUPPLY
- CYBER SECURITY FEATURES
- NDAA COMPLIANT



TECHNICAL SPECIFICATIONS

GENERAL & MECHANICAL

Dimensions	See dimensions drawings
Operating Temperature	-60° +60°C, +75°C peak (-76°F +140°F, +167°F peak)
Construction	AISI316L Stainless Steel
Finish	Electro-polished
Mounting	2x M6, centre to centre 63.5mm
Cable entries	2x M20 x1,5, nickel plated brass cable glands included
Wiper	Optional
Weight	Unit: 5 Kg / Package: 6.5 Kg (version with wiper)

ELECTRICAL

Temperature Climatization	T[°C] ON = 12 ± 4°C, T[°C] OFF = 20 ± 3°C
Available voltages	24VAC, 120VAC, 230VAC (+/-10%) 24VDC or PoE available on request
Power consumption	40W MAX

CERTIFICATIONS

Ingress Protection	EN 60529 (IP66/IP67)
IK Classification	IK10 on all sides except for the front glass
EMC	EN 55032; EN 55035; EN/IEC 61000-3-2; EN/IEC 61000-3-3; EN/IEC 61000-6-2; EN/IEC 61000-6-4; CISPR-32; CISPR-35
LVD	EN/IEC 62368-1
RoHS	2011/65/EU + 2015/863/EU (RoHS 3)
WEEE	2012/19/EU

VIDEO/CAMERA

Sensor	1/2.8" Progressive CMOS, 3MP
Resolution	- Up to 2065x1553, 3MP (H.264/H.265) - Up to 1920x1080, 2MP (MJPEG)
Compression	H.265/H.264/MJPEG
Streaming	Up to 4 configurable streams
Frame Rate	- 2MP: 60fps (WDR off), 30 fps (WDR on) - 3MP: 30fps (H.264/H.265)
Sensitivity	Color: 0.04 lux, B/W: 0.002 lux
Shutter Speed	1 to 1/10000 s
Optical Filter	Automatically removable IR-cut filter
White Balance	Contrast White Balance
Dynamic range	WDR/HDR
Lens	40x Autofocus Optical Zoom, 10x Digital Zoom, 4.3-170mm, F1.6
FOV	Horizontal: 63.7° (Wide), 1.7° (Tele) Vertical: 49.2° (Wide), 1.3° (Tele)
Analytics	Motion Detection/Tampering. OPTIONAL: intrusion detection, wrong direction, object removal, sabotage, loitering, stopped vehicle, object counting
Image settings	Color, Brightness, Sharpness, Contrast, White Balance, Exposure control, 2D/3D Noise Reduction
Event Triggers	External Input, Analytics, Network Failure Detection, Periodical Event, Manual Trigger
Event Actions	External Output Activation
Edge Recording	Micro SD/SDHC/SDXC (card not provided)
Network Storage	Support for recording to NAS
SNR	>50dB
Noise Reduction	3D Motion Compensated Noise Reduction
Iris	P-Iris, Auto-Iris
Image Stabilization	EIS

INNOVATIVE STAINLESS STEEL INNO FIXED CAMERA STATION

NETWORK

Interface	100BASE-TX or 100BASE-FX/1000BASE-X (fiber)
Security	User Authentication/ HTTPS/ IP Filter/ IEEE 802.1x/ SNMPv3
ONVIF	ONVIF profile G/S/T/M compliant
Protocols	IPv4/v6, TCP, UDP, RTP, RTSP, HTTP, HTTPS, ICMP, FTP, SMTP, DHCP, PPPoE, UPnP, IGMP, SNMP, QoS, ARP, NTP, DDNS

FIBER MEDIA CONVERTER

Interface	100 Base-FX/1000BASE-X
Cabling	Singlemode (9/125 µm) /two fibers/SC connector
Maximum Distance	20km
Wavelength	1310 nm

IP OVER COAXIAL CONVERTER

Interface	10/100 Base-TX over Coaxial Cable
Bandwidth	Up to 95Mbps downlink/uplink
Maximum Distance	1800m
Technology	Broadband over Power Lines (BPL)
Interference Prevention	IEEE 1901-2010 Inter-System Protocol ISP

MODELS

TSF1TV2-IP-M	New Generation Stainless Steel FIXED IP 3MP 40x camera station, 24VAC
TSF2TV2-IP-M	New Generation Stainless Steel FIXED IP 3MP 40x camera station, 120VAC
TSF3TV2-IP-M	New Generation Stainless Steel FIXED IP 3MP 40x camera station, 230VAC
TSF1TV2-SM-M	New Generation Stainless Steel FIXED IP 3MP 40x camera station, with SM FO media converter, 24VAC
TSF2TV2-SM-M	New Generation Stainless Steel FIXED IP 3MP 40x camera station, with SM FO media converter, 120VAC
TSF3TV2-SM-M	New Generation Stainless Steel FIXED IP 3MP 40x camera station, with SM FO media converter, 230VAC
TSF1TV2W-IP-M	New Generation Stainless Steel FIXED IP 3MP 40x camera station, wiper, 24VAC
TSF2TV2W-IP-M	New Generation Stainless Steel FIXED IP 3MP 40x camera station, wiper, 120VAC
TSF3TV2W-IP-M	New Generation Stainless Steel FIXED IP 3MP 40x camera station, wiper, 230VAC
TSF1TV2W-SM-M	New Generation Stainless Steel FIXED IP 3MP 40x camera station, wiper and SM FO media converter, 24VAC
TSF2TV2W-SM-M	New Generation Stainless Steel FIXED IP 3MP 40x camera station, wiper and SM FO media converter, 120VAC
TSF3TV2W-SM-M	New Generation Stainless Steel FIXED IP 3MP 40x camera station, wiper and SM FO media converter, 230VAC

- For IP over COAXIAL converter, replace the suffix "SM" with "CX"
 - All the above models include sunshield and heater
 - for PoE option, use number "S", ex. TSF5TV2-

PRE-ASSEMBLED CABLE TAILS

SAUCT3-A	3 meters composite cable tail (power, CAT6A, data) with two M20 nickel-plated brass glands.
SAUCTF3-C	3 meters composite cable tail (power, data, fiber optic) with two M20 nickel-plated brass glands. Fiber termination: SC.
SAUCT5-A	5 meters composite cable tail (power, CAT6A, data) with two M20 nickel-plated brass glands.
SAUCTF5-C	5 meters composite cable tail (power, data, fiber optic) with two M20 nickel-plated brass glands. Fiber termination: SC.
SAUCT10-A	10 meters composite cable tail (power, CAT6A, data) with two M20 nickel-plated brass glands.
SAUCTF10-C	10 meters composite cable tail (power, data, fiber optic) with two M20 nickel-plated brass glands. Fiber termination: SC.

ACCESSORIES

SSBK-S	Wall mounting bracket
SSPM-S	Pole mount adapter for SSBK-S
SSPTM-S	Top pole mount adapter
SSBKLN-S	Ceiling mounting bracket

DIMENSIONS

