

TECNOVIDEO

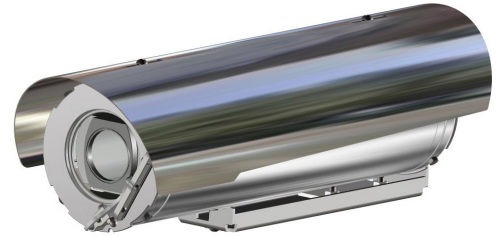
CCTV SYSTEMS AND ACCESSORIES

INNO FIXED 5MP

INNOVATIVE STAINLESS STEEL CAMERA STATION

SAFE AREA

- **INNOVATIVE PRODUCT, BEST IN CLASS TECHNOLOGY**
- AISI316L STAINLESS STEEL CONSTRUCTION
- OPERATING TEMPERATURE -60°C +60°C (+75°C PEAK)
- 5MP CAMERA, H.265, 2.7-12MM MOTORIZED VARIFOCAL
- EDGE RECORDING
- OPTIONAL WINDOW WIPER
- IP66/67
- OPTIONAL BUILT-IN FIBER MEDIA CONVERTER
- OPTIONAL BUILT-IN IP OVER COAXIAL CONVERTER
- OPTIONAL BUILT-IN 120VAC OR 230VAC POWER SUPPLY
- CYBER SECURITY FEATURES
- NDAA COMPLIANT



ONVIF®

TECHNICAL SPECIFICATIONS

GENERAL & MECHANICAL

Dimensions	See dimensions drawings
Operating Temperature	-60° +60°C, +75°C peak (-76°F +140°F, +167°F peak)
Construction	AISI316L Stainless Steel
Finish	Electro-polished
Mounting	2x M6, centre to centre 63.5mm
Cable entries	2x M20 x1,5, nickel plated brass cable glands
Wiper	Optional
Weight	Unit: 5 Kg / Package: 6.5 Kg (version with wiper)

ELECTRICAL

Temperature Climatization	T[°C] ON = 12 ± 4°C, T[°C] OFF = 20 ± 3°C
Available voltages	24VAC, 120VAC, 230VAC (+/-10%) 24VDC or PoE available on request
Power consumption	40W MAX

CERTIFICATIONS

Ingress Protection	EN 60529 (IP66/IP67)
EMC	EN 55032; EN 55035; EN/IEC 61000-3-2; EN/IEC 61000-3-3; EN/IEC 61000-6-2; EN/IEC 61000-6-4; CISPR-32; CISPR-35
LVD	EN/IEC 62368-1
RoHS	2011/65/EU + 2015/863/EU (RoHS 3)
WEEE	2012/19/EU

VIDEO/CAMERA

Sensor	1/2.7" Progressive CMOS, 5MP
Resolution	- Up to 2720x1976, 5MP (H.264/H.265) - Up to 1920x1080, 2MP (MJPEG)
Compression	H.265/H.264/MJPEG
Streaming	Up to 4 configurable streams
Frame Rate	- 2MP: 60fps (WDR off), 30 fps (WDR on) - 5MP: 30fps (H.264/H.265)

Sensitivity	Color: 0.11 lux, B/W: 0.023 lux
Shutter Speed	1~1/10000 s
Optical Filter	Automatically removable IR-cut filter
White Balance	Contrast White Balance
Dynamic range	WDR/HDR
Lens	2.7-12mm Motorized Varifocal, 10x Digital Zoom, F1.6
FOV	Horizontal: 102.1° (Wide), 31.5° (Tele) Vertical: 70.3° (Wide), 22.7° (Tele)
Analytics	Motion Detection/Tampering OPTIONAL: Face Detection/Tracking/Recognition, LPR Detection/Recognition, People Counting, Human/ Vehicle Classification, Object Classification/Recognition
Image settings	Color, Brightness, Sharpness, Contrast White Balance, Exposure Control 2DNR, 3DNR, NR by Motion Masking, Text Overlay
Event Triggers	External Input, Analytics, Network Failure Detection, Periodical Event, Manual Trigger
Event Actions	External output Activation Video recording to edge storage File Upload : FTP, network share and email Notification : HTTP, FTP, email
Edge Recording	microSD/microSDHC/microSDXC card (card not provided)
Network Storage	Support for recording to NAS
SNR	>50dB
Noise Reduction	2D/3D, NR by motion
Iris	P-Iris

NETWORK

Interface	100BASE-TX or 100BASE-FX/1000BASE-X (fiber)
Security	User Authentication/ HTTPS/ IP Filter/ IEEE 802.1x/ SNMPv3
ONVIF	ONVIF profile G/S/T/M compliant
Protocols	IPv4/v6, TCP, UDP, RTP, RTSP, HTTP, HTTPS, ICMP, FTP, SMTP, DHCP, PPPoE, UPnP, IGMP, SNMP, QoS, ARP, NTP

www.tecnovideoctv.com

Tecnovideo S.r.l. - Via A. De Gasperi, 3 36030 Villaverla (VI) ITALY - Tel. +39.0445.350444 - info@tecnovideoctv.com

INNOVATIVE STAINLESS STEEL CAMERA STATION

FIBER MEDIA CONVERTER

Interface	100 Base-FX/1000BASE-X
Cabling	Singlemode (9/125 μm) /two fibers/SC connector
Maximum Distance	20km
Wavelength	1310 nm

IP OVER COAXIAL CONVERTER

Interface	10/100 Base-TX over Coaxial Cable
Bandwidth	Up to 95Mbps downlink/uplink
Maximum Distance	1800m
Technology	Broadband over Power Lines (BPL)
Interference Prevention	IEEE 1901-2010 Inter-System Protocol ISP

MODELS

TSF1TV10-IP-M	New Generation Stainless Steel FIXED IP camera station 5MP 2.7-12mm, 24VAC
TSF2TV10-IP-M	New Generation Stainless Steel FIXED IP camera station 5MP 2.7-12mm, 120VAC
TSF3TV10-IP-M	New Generation Stainless Steel FIXED IP camera station 5MP 2.7-12mm, 230VAC
TSF1TV10-SM-M	New Generation Stainless Steel FIXED IP camera station 5MP 2.7-12mm, with SM FO media converter, 24VAC
TSF2TV10-SM-M	New Generation Stainless Steel FIXED IP camera station 5MP 2.7-12mm, with SM FO media converter, 120VAC
TSF3TV10-SM-M	New Generation Stainless Steel FIXED IP camera station 5MP 2.7-12mm, with SM FO media converter, 230VAC
TSF1TV10W-IP-M	New Generation Stainless Steel FIXED IP camera station 5MP 2.7-12mm, wiper, 24VAC
TSF2TV10W-IP-M	New Generation Stainless Steel FIXED IP camera station 5MP 2.7-12mm, wiper, 120VAC
TSF3TV10W-IP-M	New Generation Stainless Steel FIXED IP camera station 5MP 2.7-12mm, wiper, 230VAC
TSF1TV10W-SM-M	New Generation Stainless Steel FIXED IP camera station 5MP 2.7-12mm, wiper and SM FO media converter, 24VAC
TSF2TV10W-SM-M	New Generation Stainless Steel FIXED IP camera station 5MP 2.7-12mm, wiper and SM FO media converter, 120VAC
TSF3TV10W-SM-M	New Generation Stainless Steel FIXED IP camera station 5MP 2.7-12mm, wiper and SM FO media converter, 230VAC

- For IP over COAXIAL converter replace the suffix "IP" with "CX"
- All the above models include sunshield and heater

PRE-ASSEMBLED CABLE TAILS

SAUCT3-A	3 meters composite cable tail (power, CAT6A, data) with two M20 nickel-plated brass glands.
SAUCTF3-C	3 meters composite cable tail (power, data, fiber optic) with two M20 nickel-plated brass glands. Fiber termination: SC.
SAUCT5-A	5 meters composite cable tail (power, CAT6A, data) with two M20 nickel-plated brass glands.
SAUCTF5-C	5 meters composite cable tail (power, data, fiber optic) with two M20 nickel-plated brass glands. Fiber termination: SC.
SAUCT10-A	10 meters composite cable tail (power, CAT6A, data) with two M20 nickel-plated brass glands.
SAUCTF10-C	10 meters composite cable tail (power, data, fiber optic) with two M20 nickel-plated brass glands. Fiber termination: SC.

ACCESSORIES

SSBK-S	Wall mounting bracket
SSPM-S	Pole mount adapter for SSBK-S
SSPTM-S	Top pole mount adapter
SSBKLN-S	Ceiling mounting bracket

DIMENSIONS

