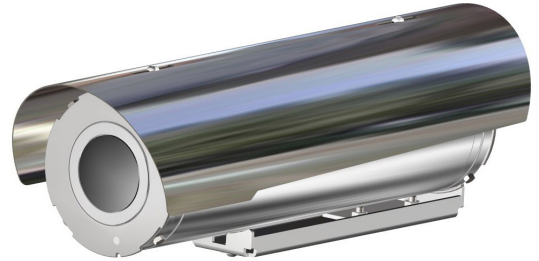


## TSF-TIXX SERIES

INNOVATIVE STAINLESS STEEL INNO THERMAL FIXED CAMERA STATION

SAFE AREA

- **INNOVATIVE PRODUCT, BEST IN CLASS TECHNOLOGY**
- AISI316L STAINLESS STEEL CONSTRUCTION
- 640X512 RESOLUTION, 9HZ OR 25HZ, LWIR
- WIDE RANGE OF FIXED LENSES
- GERMANIUM WINDOW
- IP66/67
- OPTIONAL BUILT-IN FIBER MEDIA CONVERTER
- OPTIONAL BUILT-IN IP OVER COAXIAL CONVERTER
- OPTIONAL BUILT-IN 120VAC OR 230VAC POWER SUPPLY



### TECHNICAL SPECIFICATIONS

#### GENERAL & MECHANICAL

<b>Dimensions</b>	See dimensions drawings
<b>Operating Temperature</b>	-60° +60°C, +75°C peak (-76°F +140°F, +167°F peak)
<b>Construction</b>	AISI316L Stainless Steel
<b>Finish</b>	Electro-polished
<b>Window</b>	Germanium HC coated 75mm
<b>Mounting</b>	2x M6, centre to centre 63.5mm
<b>Cable entries</b>	2x M20 x1,5, nickel plated brass cable glands included
<b>Weight</b>	Unit: 5 Kg / Package: 6.5 Kg

#### ELECTRICAL

<b>Temperature Climatization</b>	T[°C] ON = 12 ± 4°C, T[°C] OFF = 20 ± 3°C
<b>Available voltages</b>	24VAC, 120VAC, 230VAC (+/-10%) 24VDC or PoE available on request
<b>Power consumption</b>	40W MAX

#### CERTIFICATIONS

<b>Ingress Protection</b>	EN 60529 (IP66/IP67)
<b>IK Classification</b>	IK10 on all sides except for the front window
<b>EMC</b>	EN 55032; EN 55035; EN/IEC 61000-3-2; EN/IEC 61000-3-3; EN/IEC 61000-6-2; EN/IEC 61000-6-4; CISPR-32; CISPR-35
<b>LVD</b>	EN/IEC 62368-1
<b>RoHS</b>	2011/65/EU + 2015/863/EU (RoHS 3)
<b>WEEE</b>	2012/19/EU

#### CAMERA (THERMAL)

<b>Sensor</b>	VOx Microbolometer, 12µm, uncooled
<b>Resolution</b>	640x512 pixels
<b>Spectral Band</b>	LWIR 8-14µm
<b>Compression</b>	H.264, MJPEG
<b>Frame Rate</b>	9Hz (9fps) or 25Hz (25fps)
<b>Focus Settings</b>	Fixed manual focus, minimum focus distance

<b>Sensitivity</b>	≤50mK@25°, F/1.0
<b>Shutter type</b>	NUC
<b>Fire Detection</b>	Yes
<b>Image settings</b>	Black hot, White hot, Color Palette (18 types)
<b>Event Actions</b>	Recording/Capture/Sending mail/PTZ linkage/Alarm output
<b>Analytics</b>	Line intrusion, cross-border, and region intrusion
<b>Alarm Trigger</b>	Network disconnection, IP address conflict, full memory, memory error, illegal access and abnormal detection
<b>Edge Recording</b>	Yes
<b>Gain</b>	- Digital Filter and Imaging Denoising - Digital Detail Enhancement

Lens	FOV (HxV)	Min Focus Distance
	640x512	
9.1mm	48.6°x38.6°, F1.0	0.5m
13mm	32.9°x26.6°, F1.0	0.5m
19mm	22.9°x18.4°, F1.0	0.5m
25mm	17.4°x14.0°, F1.0	1m
35mm	12.5°x10.0°, F1.0	1.5m
55mm	8.6°x6.4°, F1.0	2m

#### NETWORK

<b>Interface</b>	100BASE-TX/1000BASE-T or 100BASE-FX/1000BASE-X (fiber)
<b>Security</b>	- User Authentication/HTTPS
<b>ONVIF</b>	ONVIF S
<b>Protocols</b>	- TCP, UDP, RTP, RTSP, RTCP, HTTP, HTTPS, ICMP, FTP, SMTP, DHCP, IGMP, QoS, NTP, DNS

## INNOVATIVE STAINLESS STEEL INNO THERMAL FIXED CAMERA STATION

### FIBER MEDIA CONVERTER

<b>Interface</b>	100 Base-FX/1000BASE-X
<b>Cabling</b>	Singlemode (9/125 μm) /two fibers/SC connector
<b>Maximum Distance</b>	20km
<b>Wavelength</b>	1310 nm

### IP OVER COAXIAL CONVERTER

<b>Interface</b>	100BASE-TX or 100BASE-FX/1000BASE-X (fiber)
<b>Bandwidth</b>	Up to 95Mbps downlink/uplink
<b>Maximum Distance</b>	1800m
<b>Technology</b>	Broadband over Power Lines (BPL)
<b>Interference Prevention</b>	IEEE 1901-2010 Inter-System Protocol ISP

### MODELS

<b>TSF1Tlxx-IP-M</b>	New Generation Stainless Steel FIXED Thermal Camera Station. 24VAC
<b>TSF2Tlxx-IP-M</b>	New Generation Stainless Steel FIXED Thermal Camera Station. 120VAC
<b>TSF3Tlxx-IP-M</b>	New Generation Stainless Steel FIXED Thermal Camera Station. 230VAC
<b>TSF1Tlxx-SM-M</b>	New Generation Stainless Steel FIXED Thermal Camera Station, SM FO media converter. 24VAC
<b>TSF2Tlxx-SM-M</b>	New Generation Stainless Steel FIXED Thermal Camera Station, SM FO media converter. 120VAC
<b>TSF3Tlxx-SM-M</b>	New Generation Stainless Steel FIXED Thermal Camera Station, SM FO media converter. 230VAC
<b>TSF1Tlxx-CX-M</b>	New Generation Stainless Steel FIXED Thermal Camera Station, IP over COAXIAL converter. 24VAC
<b>TSF2Tlxx-CX-M</b>	New Generation Stainless Steel FIXED Thermal Camera Station, IP over COAXIAL converter. 120VAC
<b>TSF3Tlxx-CX-M</b>	New Generation Stainless Steel FIXED Thermal Camera Station, IP over COAXIAL converter. 230VAC

To order the required camera configuration, please replace "Tlxx" with the number indicated in the table below

### CAMERA MODEL SELECTION (TIXX)

	640x512	
	9Hz	25Hz
9.1mm	TI22	TI32
13mm	TI23	TI33
19mm	TI24	TI34
25mm	TI25	TI35
35mm	TI26	TI36
55mm	TI27	TI37

### PRE-ASSEMBLED CABLE TAILS

<b>SAUCT3-A</b>	3 meters composite cable tail (power, CAT6A, data) with two M20 nickel-plated brass glands.
<b>SAUCTF3-C</b>	3 meters composite cable tail (power, data, fiber optic) with two M20 nickel-plated brass glands. Fiber termination: SC.
<b>SAUCT5-A</b>	5 meters composite cable tail (power, CAT6A, data) with two M20 nickel-plated brass glands.
<b>SAUCTF5-C</b>	5 meters composite cable tail (power, data, fiber optic) with two M20 nickel-plated brass glands. Fiber termination: SC.
<b>SAUCT10-A</b>	10 meters composite cable tail (power, CAT6A, data) with two M20 nickel-plated brass glands.
<b>SAUCTF10-C</b>	10 meters composite cable tail (power, data, fiber optic) with two M20 nickel-plated brass glands. Fiber termination: SC.

### ACCESSORIES

<b>SSBK-S</b>	Wall mounting bracket
<b>SSPM-S</b>	Pole mount adapter for SSBK-S
<b>SSPTM-S</b>	Top pole mount adapter
<b>SSBKCLN-S</b>	Ceiling mounting bracket

## DIMENSIONS

