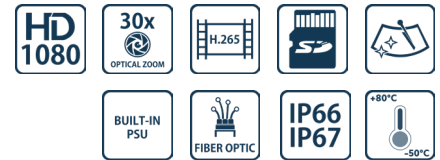
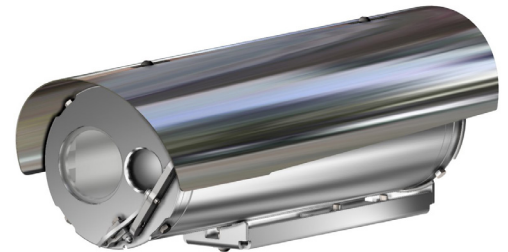


TSFDTV30-XX SERIES

INNOVATIVE STAINLESS STEEL INNO DUAL THERMAL VISIBLE & THERMAL FIXED CAMERA STATION

SAFE AREA

- **INNOVATIVE PRODUCT, BEST IN CLASS TECHNOLOGY**
- AISI316L STAINLESS STEEL CONSTRUCTION
- OPERATING TEMPERATURE -50°C +60°C (+75°C PEAK)
- VISIBLE: 2MP, 30X AUTOFOCUS OPTICAL ZOOM
- THERMAL: 640X512 RESOLUTION, 9HZ OR 25HZ, LWIR
- INTEGRATED WINDOW WIPER (VISIBLE)
- EDGE RECORDING
- IP66/67
- OPTIONAL BUILT-IN FIBER MEDIA CONVERTER
- OPTIONAL BUILT-IN 120VAC OR 230VAC POWER SUPPLY



TECHNICAL SPECIFICATIONS



GENERAL & MECHANICAL

Dimensions	See dimensions drawings
Operating Temperature	-50°C +60°C, +75°C peak (-58°F +140°F, +167°F peak)
Construction	AISI316L Stainless Steel
Finish	Electro-polished
Window	Dual window. Thermal: Germanium HC coated 34mm
Mounting	2x M6, centre to centre 63.5mm
Cable entries	2x M20 x1,5, nickel plated brass cable glands included
Wiper	Yes (visible)
Weight	Unit: 6.5 Kg / Package: 8 Kg (version with wiper)

ELECTRICAL

Temperature Climatization	T[°C] ON = 12 ± 4°C, T[°C] OFF = 20 ± 3°C
Available voltages	24VAC, 120VAC, 230VAC (+/-10%) 24VDC or PoE available on request
Power consumption	40W MAX

CERTIFICATIONS

Ingress Protection	EN 60529 (IP66/IP67)
IK Classification	IK10 on all sides except for the front window
EMC	EN 55032; EN 55035; EN/IEC 61000-3-2; EN/IEC 61000-3-3; EN/IEC 61000-6-2; EN/IEC 61000-6-4; CISPR-32; CISPR-35
LVD	EN/IEC 62368-1
RoHS	2011/65/EU + 2015/863/EU (RoHS 3)
WEEE	2012/19/EU

VISIBLE CAMERA

Sensor	1/2.8" Sony Exmor CMOS, 2MP
Resolution	1920x1080, 2MP
Compression	H.265/H.264/MJPEG
Streaming	1080P@30fps
Frame Rate	Channel 1: 2MP, 30fps

Focus Settings	Auto/Manual/Semi-Auto
Sensitivity	Color: 0.005 lux, F1.5; B/W: 0.0005 lux, F1.5
Shutter Speed	1/3 to 1/30000s
Optical Filter	Automatically removable IR-cut filter
White Balance	Auto/Manual/Indoor/Outdoor/ATW/Sodium Lamp/ Natural/Street Lamp/One Push
Dynamic range	WDR
Lens	30x Autofocus Optical Zoom, 16x Digital Zoom, 4.7-141mm
FOV	Horizontal: 61.2° (Wide), 2.2° (Tele) Vertical: 36.8° (Wide), 1.2° (Tele)
Analytics	Tripwire, Intrusion, Loitering, etc.
Image settings	Saturation, Brightness, Contrast, Sharpness, Gamma
Event Triggers	Motion Detection, Tamper Detection, Scene Changing, Network, Illegal Access
Event Actions	External Output Activation
Edge Recording	microSD (card not provided)
Gain	AGC
SNR	>55dB
Noise Reduction	2D/3D
Image Stabilization	EIS
Defog	Electronic-defog

THERMAL CAMERA

Sensor	VOx Microbolometer, 12µm, uncooled
Resolution	640x512 pixels
Spectral Band	LWIR 8-14µm
Compression	H.265/H.264/MJPEG
Streaming	Channel 2: 704x576, 25fps
Frame Rate	9HZ or 25HZ
Sensitivity	≤50mK
Temperature Measurement	Accuracy ±3°C / ±3%, range -20~150°C or 0°C~550°C (High temperature mode)
Image settings	White heat, black heat, fusion, rainbow, etc

INNOVATIVE STAINLESS STEEL INNO DUAL THERMAL VISIBLE & THERMAL FIXED CAMERA STATION

NETWORK

Interface	100BASE-TX/1000BASE-T or 100BASE-FX/1000BASE-X (fiber)
ONVIF	ONVIF compliant
Protocols	RTP, RTSP, HTTP, HTTPS, TCP, UDP

FIBER MEDIA CONVERTER

Interface	100 Base-FX/1000BASE-X
Cabling	Singlemode (9/125 μm) /two fibers/SC connector
Maximum Distance	20km
Wavelength	1310 nm

IP OVER COAXIAL CONVERTER

Interface	10/100 Base-TX over Coaxial Cable
Bandwidth	Up to 95Mbps downlink/uplink
Maximum Distance	1800m
Technology	Broadband over Power Lines (BPL)
Interference Prevention	IEEE 1901-2010 Inter-System Protocol ISP

MODELS

TSFD1TV30-xxW-IP-M	New Generation stainless steel FIXED IP DUAL camera station, 2MP 30x (visible), 640x512 (thermal), 24VAC
TSFD2TV30-xxW-IP-M	New Generation stainless steel FIXED IP DUAL camera station, 2MP 30x (visible), 640x512 (thermal), 120VAC
TSFD3TV30-xxW-IP-M	New Generation stainless steel FIXED IP DUAL camera station, 2MP 30x (visible), 640x512 (thermal), 230VAC
TSFD1TV30-xxW-SM-M	New Generation stainless steel FIXED IP DUAL camera station, 2MP 30x (visible), 640x512 (thermal), SM FO media converter, 24VAC
TSFD2TV30-xxW-SM-M	New Generation stainless steel FIXED IP DUAL camera station, 2MP 30x (visible), 640x512 (thermal), SM FO media converter, 120VAC
TSFD3TV30-xxW-SM-M	New Generation stainless steel FIXED IP DUAL camera station, 2MP 30x (visible), 640x512 (thermal), SM FO media converter, 230VAC

- All the above models include sunshield and heater

- To order the required camera configuration, please replace "TV30-xx" with the number indicated in the table below

CAMERA MODEL SELECTION (TV30-XX)

	9Hz	25Hz
9mm	TV30-22	TV30-32
13mm	TV30-23	TV30-33
19mm	TV30-24	TV30-34
25mm	TV30-25	TV30-35

PRE-ASSEMBLED CABLE TAILS

SAUCCT3-A	3 meters composite cable tail (power, CAT6A, data) with two M20 nickel-plated brass glands
SAUCCTF3-C	3 meters composite cable tail (power, data, fiber optic) with two M20 nickel-plated brass glands. Fiber termination: SC
SAUCCT5-A	5 meters composite cable tail (power, CAT6A, data) with two M20 nickel-plated brass glands
SAUCCTF5-C	5 meters composite cable tail (power, data, fiber optic) with two M20 nickel-plated brass glands. Fiber termination: SC
SAUCCT10-A	10 meters composite cable tail (power, CAT6A, data) with two M20 nickel-plated brass glands
SAUCCTF10-C	10 meters composite cable tail (power, data, fiber optic) with two M20 nickel-plated brass glands. Fiber termination: SC

ACCESSORIES

SSBK-S	Wall mounting bracket
SSPM-S	Pole mount adapter for SSBK-S
SSPTM-S	Top pole mount adapter
SSBKLN-S	Ceiling mounting bracket

DIMENSIONS

