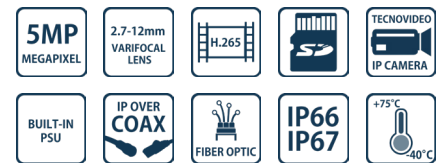
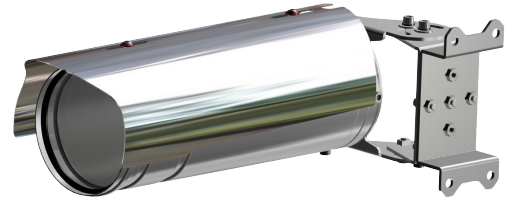


## INNO COMPACT 5MP

INNOVATIVE STAINLESS STEEL BULLET CAMERA

SAFE AREA

- **INNOVATIVE PRODUCT, BEST IN CLASS TECHNOLOGY**
- AISI316L STAINLESS STEEL CONSTRUCTION
- OPERATING TEMPERATURE -40°C +60°C (+75°C PEAK)
- 5MP CAMERA, H.265, 2.7-12MM MOTORIZED VARIFOCAL
- DIRT RESISTANT WINDOW WITH SPECIAL COATING
- 3-AXIS WALL/CEILING MOUNTING BRACKET
- EDGE RECORDING
- IP66/67
- OPTIONAL BUILT-IN FIBER MEDIA CONVERTER
- OPTIONAL BUILT-IN IP OVER COAXIAL CONVERTER
- OPTIONAL BUILT-IN 100-240VAC OR POE POWER SUPPLY
- CYBER SECURITY FEATURES
- NDAA COMPLIANT



## TECHNICAL SPECIFICATIONS

### GENERAL & MECHANICAL

<b>Dimensions</b>	See dimensions drawings
<b>Operating Temperature</b>	<ul style="list-style-type: none"> <li>• -40° +60°C, +75°C peak (-40°F +140°F, +167°F peak)</li> <li>• -20° +60°C, +75°C peak (-4°F +140°F, +167°F peak) *</li> </ul> *Versions without heater
<b>Construction</b>	AISI316L Stainless Steel
<b>Finish</b>	Electro-polished
<b>Mounting</b>	See drawings next page
<b>Cable entries</b>	2x M20 x1,5, nickel-plated brass cable glands
<b>Weight</b>	Unit: 5.5 Kg / Package: 6.5 Kg

### ELECTRICAL

<b>Temperature Climatization</b>	<ul style="list-style-type: none"> <li>• T[°C] ON = 12 ± 4°C, T[°C] OFF = 20 ± 3°C</li> <li>• No climatization (versions without heater)</li> </ul>
<b>Available voltages</b>	<ul style="list-style-type: none"> <li>• 24VAC/DC</li> <li>• 100-240VAC</li> <li>• PoE</li> </ul>
<b>Power consumption</b>	<ul style="list-style-type: none"> <li>• 40W MAX</li> <li>• 25W MAX (PoE version)</li> </ul>

### CERTIFICATIONS

<b>Ingress Protection</b>	EN 60529 (IP66/IP67)
<b>EMC</b>	EN 55032; EN 55035; EN/IEC 61000-3-2; EN IEC 61000-3-3; EN IEC 61000-6-2; EN IEC 61000-6-4; CISPR 32; CISPR 35
<b>LVD</b>	EN/IEC 62368-1
<b>RoHS</b>	2011/65/EU + 2015/863/EU (RoHS 3)
<b>WEEE</b>	2012/19/EU

### VIDEO/CAMERA

<b>Sensor</b>	1/2.7" Progressive CMOS, 5MP
<b>Resolution</b>	<ul style="list-style-type: none"> <li>- Up to 2720x1976, 5MP (H.264/H.265)</li> <li>- Up to 1920x1080, 2MP (MJPEG)</li> </ul>
<b>Compression</b>	H.265/H.264/MJPEG
<b>Streaming</b>	Up to 4 configurable streams
<b>Frame Rate</b>	<ul style="list-style-type: none"> <li>- 2MP: 60fps (WDR off), 30 fps (WDR on)</li> <li>- 5MP: 30fps (H.264/H.265)</li> </ul>
<b>Sensitivity</b>	Color: 0.11 lux, B/W: 0.023 lux
<b>Shutter Speed</b>	1~1/10000 s
<b>Optical Filter</b>	Automatically removable IR-cut filter
<b>White Balance</b>	Contrast White Balance
<b>Dynamic range</b>	WDR/HDR
<b>Lens</b>	2.7-12mm Motorized Varifocal, 10x Digital Zoom, F1.6
<b>FOV</b>	Horizontal: 102.1° (Wide), 31.5° (Tele) Vertical: 70.3° (Wide), 22.7° (Tele)
<b>Analytics</b>	Motion Detection/Tampering OPTIONAL: Face Detection/Tracking/Recognition, LPR Detection/Recognition, People Counting, Human/Vehicle Classification, Object Classification/Recognition
<b>Image settings</b>	Color, Brightness, Sharpness, Contrast White Balance, Exposure Control 2DNR, 3DNR, NR by Motion Masking, Text Overlay
<b>Event Triggers</b>	External Input, Analytics, Network Failure Detection, Periodical Event, Manual Trigger
<b>Event Actions</b>	External output Activation Video recording to edge storage File Upload : FTP, network share and email Notification : HTTP, FTP, email
<b>Edge Recording</b>	microSD/microSDHC/microSDXC card (card not provided)
<b>Network Storage</b>	Support for recording to NAS
<b>SNR</b>	>50dB

## INNOVATIVE STAINLESS STEEL BULLET CAMERA

<b>Noise Reduction</b>	2D/3D, NR by motion
<b>Iris</b>	P-Iris

### NETWORK

<b>Interface</b>	100BASE-TX or 100BASE-FX/1000BASE-X (fiber)
<b>Security</b>	User Authentication/ HTTPS/ IP Filter/ IEEE 802.1x/ SNMPv3
<b>ONVIF</b>	ONVIF profile G/S/T/M compliant
<b>Protocols</b>	ARP, PPPoE, IPv4/v6, ICMP, IGMP, QoS, TCP, UDP, DHCP, UPnP, SNMP, SMTP, RTP, RTSP, HTTP, HTTPS, FTP, NTP, DDNS

### FIBER MEDIA CONVERTER

<b>Interface</b>	100 Base-FX/1000BASE-X
<b>Cabling</b>	Singlemode (9/125 μm) /two fibers/SC connector
<b>Maximum Distance</b>	20km
<b>Wavelength</b>	1310 nm

### IP OVER COAXIAL CONVERTER

<b>Interface</b>	10/100 Base-TX over Coaxial Cable
<b>Bandwidth</b>	Up to 95Mbps downlink/uplink
<b>Maximum Distance</b>	1800m
<b>Technology</b>	Broadband over Power Lines (BPL)
<b>Interference Prevention</b>	IEEE 1901-2010 Inter-System Protocol ISP

### MODELS

<b>TSC5TV10-IP</b>	New Generation Stainless Steel FIXED IP 5MP 2.7-12mm camera station, 3-axis mounting bracket, PoE
<b>TSC5TV10-IP-008</b>	New Generation Stainless Steel FIXED IP 5MP 2.7-12mm camera station, WITHOUT HEATER, 3-axis mounting bracket, PoE
<b>TSC6TV10-IP</b>	New Generation Stainless Steel FIXED IP 5MP 2.7-12mm camera station, 3-axis mounting bracket, 24VAC/DC
<b>TSC7TV10-IP</b>	New Generation Stainless Steel FIXED IP 5MP 2.7-12mm camera station, 3-axis mounting bracket, 100-240VAC
<b>TSC6TV10-SM</b>	New Generation Stainless Steel FIXED IP 5MP 2.7-12mm camera station , SM FO media converter, 3-axis mounting bracket, 24VAC/DC
<b>TSC7TV10-SM</b>	New Generation Stainless Steel FIXED IP 5MP 2.7-12mm camera station, SM FO media converter, 3-axis mounting bracket, 100-240VAC

- For IP over COAXIAL converter replace the suffix "SM" with "CX"

- All the above models include sunshield and heater (except for model with suffix -008)

### PRE-ASSEMBLED CABLE TAILS

<b>SAUCCT3-A</b>	3 meters composite cable tail (power, CAT6A, data) with two M20 nickel-plated brass glands. For FIXED camera
<b>SAUCCTF3-C</b>	3 meters composite cable tail (power, data, fiber optic) with two M20 nickel-plated brass glands. Fiber termination: SC. For FIXED camera
<b>SAUCCT5-A</b>	5 meters composite cable tail (power, CAT6A, data) with two M20 nickel-plated brass glands. For FIXED camera
<b>SAUCCTF5-C</b>	5 meters composite cable tail (power, data, fiber optic) with two M20 nickel-plated brass glands. Fiber termination: SC. For FIXED camera
<b>SAUCCT10-A</b>	10 meters composite cable tail (power, CAT6A, data) with two M20 nickel-plated brass glands. For FIXED camera
<b>SAUCCTF10-C</b>	10 meters composite cable tail (power, data, fiber optic) with two M20 nickel-plated brass glands. Fiber termination: SC. For FIXED camera

### ACCESSORIES

<b>SSPM-S</b>	Pole mount adapter
---------------	--------------------

## DIMENSIONS

