

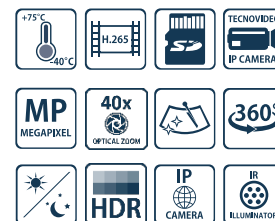
TECNOVIDEO

CCTV SYSTEMS AND ACCESSORIES

SECPTZ150TV2 SERIES

DIE-CASTING ALUMINIUM PTZ CAMERA STATION

- DIE-CASTING ALUMINIUM CONSTRUCTION
- HIGH-SPEED ROTATION AND MONITORING
- EASY INSTALLATION AND MAINTENANCE
- WEATHERPROOF STANDARD IP66
- 3MP CAMERA, H.265, 40X AUTOFOCUS OPTICAL ZOOM
- EIS ELECTRONIC IMAGE STABILIZER
- EDGE RECORDING
- SUPPORTS 802.1X and SNMP (V1-3)
- NDAA COMPLIANT



ONVIF®

TECHNICAL SPECIFICATIONS

GENERAL & MECHANICAL

Dimensions	See drawings next page
Operating Temperature	-40° +65°C (+75°C peak)
Construction	Die-Casting Aluminum
Finish	Powder coating (White Ivory painted)
Mounting	See drawings next page
Wiper	Yes

Pan Angle	360° (continuous rotation)
Pan Speed	0 – 120°/s

Tilt Angle	-90° to +40°
Tilt Speed	0 – 40°/s

Preset	256
Rotation angle	Electronically adjustable
Backlash	<0,2°
Max preset accuracy	+/- 0,1°
Preset Repeatability	+/- 0,05°
Control protocol	Pelco D, 57600 Baudrate
Weight	Unit: 13.7Kg / Package:19.4kg

ELECTRICAL

Thermostatically controlled heater	T[°C] ON = 4 ± 4°C, T[°C] OFF = 15 ± 5°C
Available voltage	24VAC (+/-10%)
Unit Max power consumption	40W (Heater off), 100W (Heater on)
IR LED Max power consumption	24W (IR LED on)

VIDEO/CAMERA

Sensor	1/2.8" Progressive CMOS, 3MP
Resolution	- Up to 2065x1553, 3MP (H.264/H.265) - Up to 1920x1080, 2MP (MJPEG)
Compression	H.265/H.264/MJPEG
Streaming	Up to 4 configurable streams
Frame Rate	- 2MP: 60fps (WDR off), 30 fps (WDR on) - 3MP: 30fps (H.264/H.265)
Sensitivity	Color: 0.04 lux, B/W: 0.002 lux
Shutter Speed	1 to 1/10000 s
Optical Filter	Automatically removable IR-cut filter
White Balance	Contrast White Balance
Dynamic range	WDR/HDR
Lens	40x Autofocus Optical Zoom, 10x Digital Zoom, 4.3-170mm, F1.6
FOV	Horizontal: 63.7° (Wide), 1.7° (Tele) Vertical: 49.2° (Wide), 1.3° (Tele)

Analytics

Motion Detection/Tampering. OPTIONAL: intrusion detection, wrong direction, object removal, sabotage, loitering, stopped vehicle, object counting

Image settings

Color, Brightness, Sharpness, Contrast, White Balance, Exposure control, 2DNR/3DNR/NR by motion masking

Event Triggers

External Input, Analytics, Network Failure Detection, Periodical Event, Manual Trigger

Event Actions

External Output Activation

Edge Recording

Micro SD/SDHC/SDXC (card not provided)

Network Storage

support for recording to NAS

SNR

>50Db

Noise Reduction

3D Motion Compensated Noise Reduction

Iris

Auto-Iris, F1.6

Image Stabilization

EIS

NETWORK

Interface

10/100 Mbps Ethernet

Security

User Authentication/ HTTPS/ IP Filter/ IEEE 802.1x

ONVIF

ONVIF profile G/S/T/M compliant

Protocols

IPv4/v6, TCP, UDP, RTP, RTSP, HTTP, HTTPS, ICMP, FTP, SMTP, DHCP, PPPoE, UPnP, IGMP, SNMP, QoS, ARP, NTP, DDNS

LED ILLUMINATOR

LED

IR LED

Wavelength

850nm

Beam patterns

25°

CERTIFICATIONS

Ingress Protection

EN 60529 (IP66)

EMC

EN 55032 :2015 [Class A]

EN 55035 :2017

MODELS

SECPTZ150TV2/24

PTZ camera station, 24VAC, without IR illuminators

All the above PTZ camera stations include sunshield, heater and integrated wiper, a built-in telemetry receiver, variable speed motors. IR illuminators to be purchased separately.

ACCESSORIES

PSU150

230VAC power supply (add-on kit)

IR25150

2x 25° beam pattern IR illuminator (add-on kit)

ALBK150

Wall mounting bracket

WP1010F

10 Liters washer tank, 10meters pump, float switch, frame version, 24VAC

WP1010C

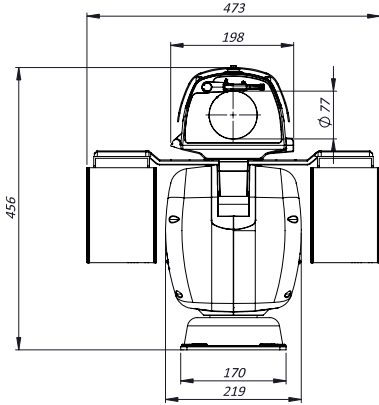
10 Liters washer tank, 10meters pump, float switch, cabinet version, 24VAC

www.tecnovideoocctv.com

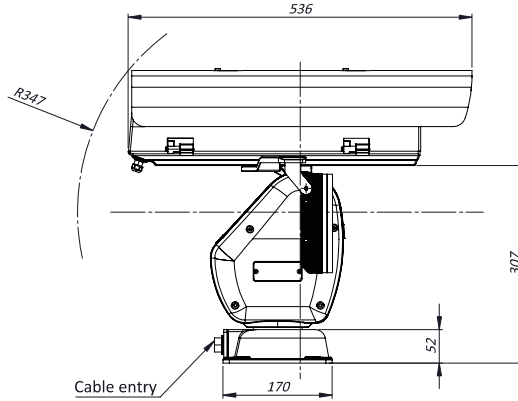
Tecnovideo S.r.l. - Via A. De Gasperi, 3 36030 Villaverla (VI) ITALY - Tel. +39.0445.350444 - info@tecnovideoocctv.com

DIMENSIONS

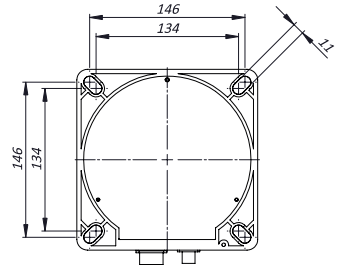
FRONT VIEW (version with IR LED)



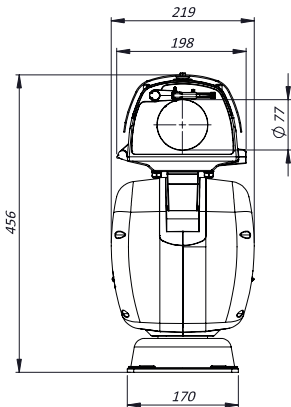
SIDE VIEW (version with IR LED)



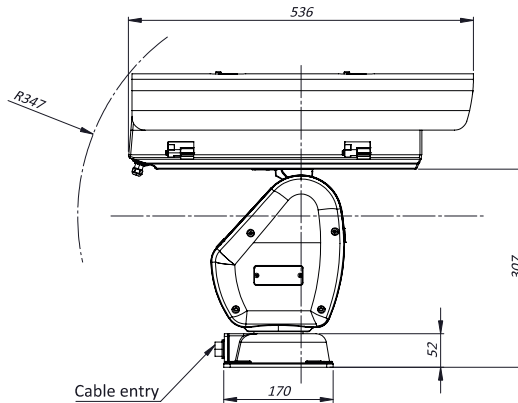
MOUNTING PATTERN



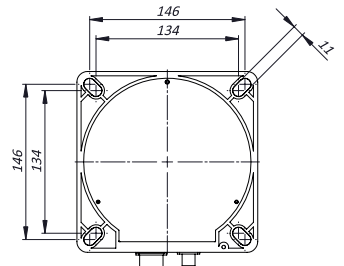
FRONT VIEW (version without IR LED)



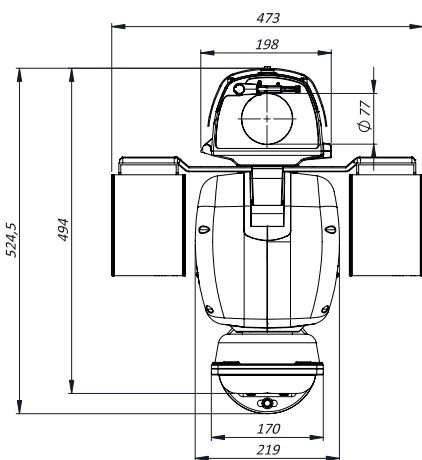
SIDE VIEW (version without IR LED)



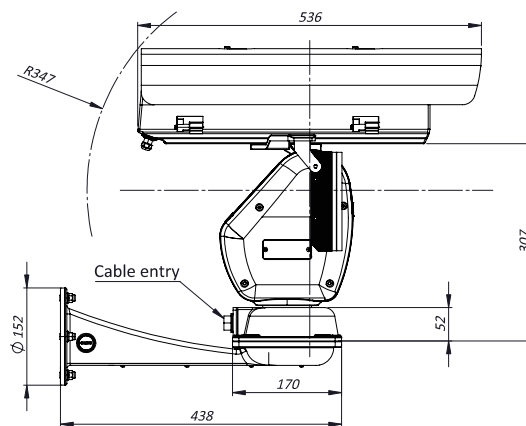
MOUNTING PATTERN



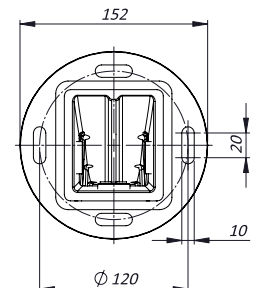
FRONT VIEW (mounting bracket)



SIDE VIEW (mounting bracket)



MOUNTING BRACKET



The unit cannot be installed upside-down nor horizontally