

## EXJBe SERIES

INCREASED SAFETY JUNCTION BOX

HAZARDOUS AREA

- ATEX/IECEX INCREASED SAFETY JUNCTION BOX
- SUITABLE FOR Ex e AND Ex i TERMINALS
- SUITABLE FOR ZONE 1-21, 2-22
- AISI316L STAINLESS STEEL CONSTRUCTION
- WEATHERPROOF STANDARD IP66/IP67
- IK10 SHOCK RESISTANCE
- FOR USE IN HIGHLY CORROSIVE ENVIRONMENTS
- IDEAL FOR ONSHORE AND OFFSHORE APPLICATIONS



### TECHNICAL SPECIFICATIONS

#### GENERAL & MECHANICAL

<b>Dimensions</b>	See drawings next page
<b>Operating Temperature</b>	-40° +75°C (-40° +167° F)
<b>Construction</b>	AISI316L Stainless Steel
<b>Finish</b>	Pickling
<b>Gaskets</b>	Silicon rubber (suitable for use -70°C/+200°C)
<b>Hardware and Screws</b>	AISI316L Stainless Steel
<b>Mounting</b>	4x on 310x240
<b>Shock Resistance</b>	IK10
<b>Weight</b>	7,0kg

#### ELECTRICAL

<b>Cable entries</b>	2 x Ø25,2mm 4 x Ø20,2mm
<b>Terminal Blocks</b>	3 x 2.5mm <sup>2</sup> (Power connection) 3 x 2.5mm <sup>2</sup> (Washer Out connection) 4 x 2.5mm <sup>2</sup> (Spare DI/DO connection)

#### ETHERNET CONNECTIONS

**Ethernet Terminal Blocks** 8 wires x 2.5mm<sup>2</sup> (10/100/1000Base-TX)  
*The above Ethernet Connections are available only on EXJBe10IP version.*

**Fiber Splice Tray** 6 fibers x SC Duplex Fiber Adapter (100/1000Base-FX)  
Singlemode (9/125 μm), 2-fiber, SC Duplex  
Integrated max 12 ports Singlemode FO  
*The above Fiber Optic Connections are available only on EXJBe10FO version.*

#### CERTIFICATIONS

##### Ingress Protection Rating

EN60529 (IP66/IP67), NEMA TYPE 1; 4; 4X; 12  
II 2 GD  
Ex e IIC T(\*) Gb/Ex ia IIC T(\*) Gb/Ex ib IIC T(\*) Gb  
Ex tb IIC T(\*) Db IP66/67  
\*T6/T85°C; T5/T100°C; T4/T135°C

##### ATEX Standards

EN 60079-0; EN 60079-1; EN 60079-7; EN 60079-11;  
EN 60079-18; EN 60079-31  
IEC 60079-0; IEC 60079-1; IEC 60079-7; IEC 60079-11;  
IEC 60079-18; IEC 60079-31

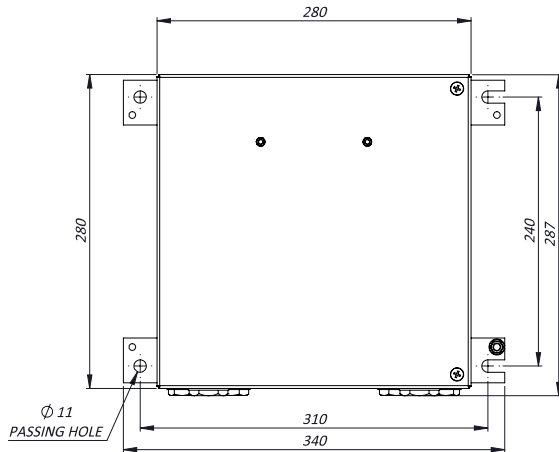
##### IECEX Standard

#### MODELS

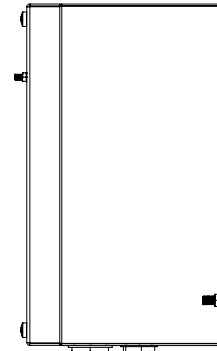
<b>EXJBe10IP/24</b>	Junction Box with Ethernet connections, 24VAC
<b>EXJBe10IP/115</b>	Junction Box with Ethernet connections, 115VAC
<b>EXJBe10IP/230</b>	Junction Box with Ethernet connections, 230VAC
<b>EXJBe10FO/24</b>	Junction Box with Fiber Optic connections, 24VAC
<b>EXJBe10FO/115</b>	Junction Box with Fiber Optic connections, 115VAC
<b>EXJBe10FO/230</b>	Junction Box with Fiber Optic connections, 230VAC

## DIMENSIONS

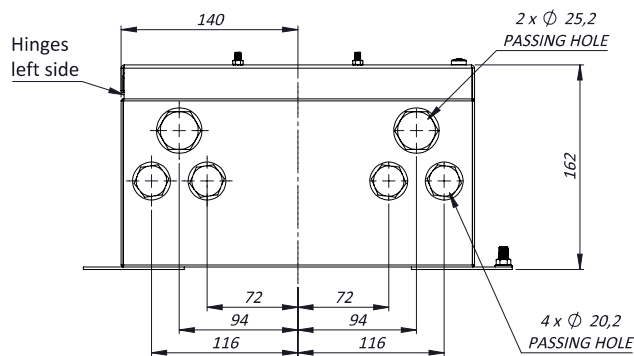
FRONT VIEW



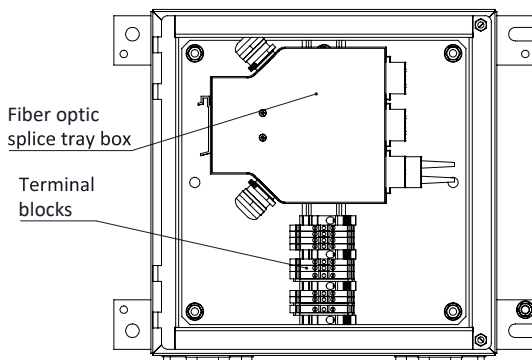
SIDE VIEW



BELOW VIEW



INTERNAL VIEW (EXJBe10FO VERSION)



INTERNAL VIEW (EXJBe10IP VERSION)

