

# TECNOVIDEO

CCTV SYSTEMS AND ACCESSORIES

# EXF129TV2 SERIES

STAINLESS STEEL FIXED CAMERA STATION

HAZARDOUS AREA

- ATEX/IECEX CAMERA FOR HAZARDOUS LOCATIONS
- 3MP CAMERA, 30FPS, 33x AUTOFOCUS OPTICAL ZOOM
- AISI316L STAINLESS STEEL CONSTRUCTION
- -40°C +60°C (+75°C PEAK)
- OPTIONAL BUILT-IN FIBER MEDIA CONVERTER
- OPTIONAL BUILT-IN 230VAC POWER SUPPLY
- SUPPORTS 802.1X and SNMP (V1-3)



## TECHNICAL SPECIFICATIONS

### GENERAL & MECHANICAL

<b>Dimensions</b>	See drawings next page
<b>Operating Temperature</b>	-40° +60°C, +75°C peak (-40°F +140°F, +167°F peak)
<b>Construction</b>	AISI316L Stainless Steel
<b>Finish</b>	Electro-polished
<b>Mounting</b>	4x M5 on 101,6 PCD 4x M6 on 90x130
<b>Cable entries</b>	2x M25x1,5 cable entries.
<b>Wiper</b>	Yes
<b>Weight</b>	Unit: 15kg / Package: 16,5kg (version with wiper)

### ELECTRICAL

<b>Thermostatically controlled heater</b>	T[°C] ON = 12 ± 4°C, T[°C] OFF = 20 ± 3°C
<b>Available voltages</b>	24VAC, 115VAC, 230VAC (+/-10%) PoE available upon request.
<b>Max power consumption</b>	25W

### VIDEO/CAMERA

<b>Sensor</b>	1/2.8" Progressive CMOS, 3MP
<b>Compression</b>	M-JPEG/H.264/H.265
<b>Streaming</b>	Up to 4 configurable streams
<b>Resolution</b>	Up to 2065x1553 @30fps
<b>Frame Rate</b>	30 fps
<b>Iris</b>	Auto-Iris, F1.6
<b>Sensitivity</b>	Color: 0.04 lux, B/W: 0.002 lux
<b>Shutter Speed</b>	1~1/10000 s
<b>Optical Filter</b>	Automatically removable IR-cut filter
<b>White Balance</b>	Contrast White Balance
<b>Dynamic range</b>	WDR/Multi Exposure HDR
<b>Image settings</b>	Color, Brightness, Sharpness, Contrast, White Balance, Exposure control, 2DNR/3DNR/NR by motion masking
<b>Event Triggers</b>	External Input, Analytics, Network Failure Detection, Periodical Event, Manual Trigger
<b>Event Actions</b>	External Output Activation
<b>Analytics</b>	Motion Detection/ Tampering/ Audio detection
<b>Lens</b>	33x Optical Zoom, 10x Digital Zoom, ~ AF, P-Iris, Auto-Iris; 4.6-152mm; F1.6
<b>Local Storage</b>	microSD (card not provided)
<b>Network Storage</b>	support for recording to NAS

### NETWORK

<b>Interface</b>	10/100 Mbps Ethernet
<b>Security</b>	User Authentication/ HTTPS/ IP Filter/ IEEE 802.1x
<b>ONVIF</b>	ONVIF profile G/S/T compliant
<b>Protocols</b>	IPv4/v6, TCP, UDP, RTP, RTSP, HTTP, HTTPS, ICMP, FTP, SMTP, DHCP, PPPoE, UPnP, IGMP, SNMP, QoS, ARP, NTP

### CERTIFICATIONS

<b>Ingress Protection</b>	EN 60529 (IP66/IP67)
---------------------------	----------------------

### Rating

- Ⓔ II 2 G Ex db op pr IIC T6 Gb -40°C ≤ Tamb ≤ +60°C
- Ⓔ II 2 D Ex tb IIIC T85°C Db -40°C ≤ Tamb ≤ +60°C
- Ⓔ II 2 G Ex db op pr IIB T5 Gb -40°C ≤ Tamb ≤ +75°C
- Ⓔ II 2 D Ex tb IIIC T100°C Db -40°C ≤ Tamb ≤ +75°C

### ATEX Standards

### IECEX Standards

### EMC

### LVD

### RoHS

### WEEE

EN 60079-0; EN 60079-1; EN 60079-28; EN 60079-31  
IEC 60079-0; IEC 60079-1; IEC 60079-28; IEC 60079-31  
EN 50130-4; EN 55035; EN/IEC 61000-6-2; EN/IEC 61000-6-4  
EN 60950-1; EN 60950-22  
2011/65/EU + 2015/863/EU (RoHS 3)  
2012/19/EU

### MODELS

<b>EXF129TV2-C2M/24</b>	Fixed camera station, MEDIUM size, 24VAC
<b>EXF129TV2-C2M/115</b>	Fixed camera station, MEDIUM size, 115VAC
<b>EXF129TV2-C2M/230</b>	Fixed camera station, MEDIUM size, 230VAC
<b>EXF129TV2FO-C2M/24</b>	Fixed camera station, MEDIUM size, SM FO media converter, 24VAC
<b>EXF129TV2FO-C2M/115</b>	Fixed camera station, MEDIUM size, SM FO media converter, 115VAC
<b>EXF129TV2FO-C2M/230</b>	Fixed camera station, MEDIUM size, SM FO media converter, 230VAC
<b>EXF129WRTV2-C2M/24<sup>1</sup></b>	Fixed camera station, MEDIUM size, wiper, 24VAC
<b>EXF129WRTV2-C2M/115<sup>1</sup></b>	Fixed camera station, MEDIUM size, wiper, 115VAC
<b>EXF129WRTV2-C2M/230<sup>1</sup></b>	Fixed camera station, MEDIUM size, wiper, 230VAC
<b>EXF129WRTV2FO-C2L/24<sup>1</sup></b>	Fixed camera station, LONG size, wiper, SM FO media converter, 24VAC
<b>EXF129WRTV2FO-C2L/115<sup>1</sup></b>	Fixed camera station, LONG size, wiper, SM FO media converter, 115VAC
<b>EXF129WRTV2FO-C2L/230<sup>1</sup></b>	Fixed camera station, LONG size, wiper, SM FO media converter, 230VAC

All the above models include sunshield and heater.  
<sup>1</sup> Telemetry receiver is included.

### PRE-ASSEMBLED CONDUIT/CABLE TAILS

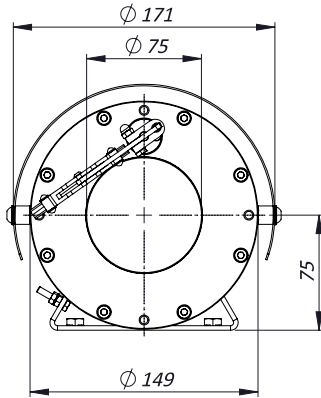
<b>EXACCTF3-A</b>	3 meters armoured composite cable tail (power, Ethernet, data) with 2x M25 barrier nickel plated brass glands.
<b>EXACCTF3-C</b>	3 meters armoured composite cable tail (power, data, fiber optic) with 2x M25 barrier nickel plated brass glands. Fiber termination: SC
<b>EXACCTF5-A</b>	5 meters armoured composite cable tail (power, Ethernet, data) with 2x M25 barrier nickel plated brass glands.
<b>EXACCTF5-C</b>	5 meters armoured composite cable tail (power, data, fiber optic) with 2x M25 barrier nickel plated brass glands. Fiber termination: SC
<b>EXACCTF10-A</b>	10 meters armoured composite cable tail (power, Ethernet, data) with 2x M25 barrier nickel plated brass glands.
<b>EXACCTF10-C</b>	10 meters armoured composite cable tail (power, data, fiber optic) with 2x M25 barrier nickel plated brass glands. Fiber termination: SC

### ACCESSORIES

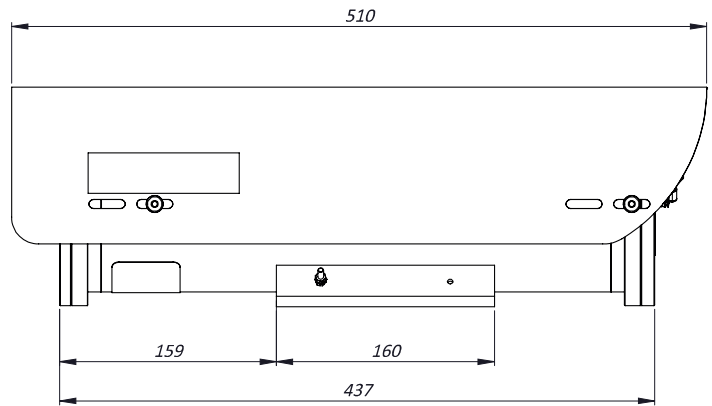
<b>SSBK-M</b>	Wall mounting bracket
<b>SSPM-M</b>	Pole mount adapter for SSBK-M
<b>SSPTM-M</b>	Top pole mount adapter

## DIMENSIONS

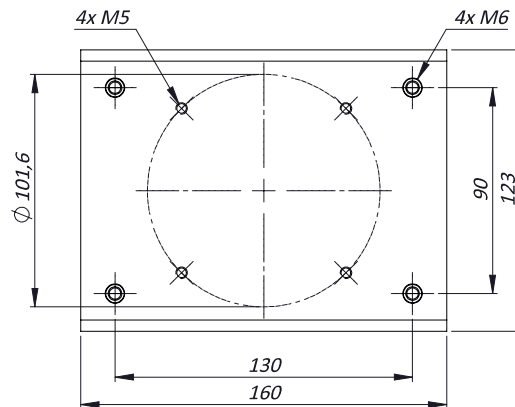
FRONT VIEW



SIDE VIEW



MOUNTING PATTERN



MAX EXTERNAL LENGTH

Model	L1 [mm]	L2 [mm]
EXF129TV2-C2M/ EXF129WRTV2-C2M	510	437
EXF129WRTV2FO-C2L	630	560