

EXF129TH02 SERIES

EXPLOSION PROOF FIXED CAMERA STATION

HAZARDOUS AREA

- ATEX/IECEX/UKCA/INMETRO CAMERA FOR HAZARDOUS LOCATIONS
- POWERED BY **WISENET XNZ-L6320**, DAY/NIGHT FULL HD, 32X OPTICAL ZOOM
- AISI316L STAINLESS STEEL CONSTRUCTION
- CERTIFICATION TEMPERATURE -40°C +75°C
- OPTIONAL BUILT-IN FIBER MEDIA CONVERTER
- OPTIONAL BUILT-IN 230VAC POWER SUPPLY



TECHNICAL SPECIFICATIONS

GENERAL & MECHANICAL

Dimensions	See drawings next page
Operating Temperature	-20° +60°C (-4° +140° F)
Construction	AISI316L Stainless Steel
Finish	Electro-polished
Mounting	4x M5 on 101,6 PCD 4x M6 on 90x130
Cable entries	2x M25x1,5 cable entries.
Wiper	Yes
Weight	Unit: 15kg / Package: 16,5kg (version with wiper)

ELECTRICAL

Thermostatically controlled heater	T[°C] ON = 12 ± 4°C, T[°C] OFF = 20 ± 3°C
Available voltages	24VAC, 115VAC, 230VAC (+/-10%) PoE available upon request
Max power consumption	25W

VIDEO/CAMERA

Sensor	1/2.8" 2MP CMOS
Compression	H.265/H.264: Main/Baseline/High, MJPEG
Streaming	Unicast(20 users) / Multicast Multiple streaming(Up to 10 profiles)
Resolution	1920x1080
Frame Rate	H.265/H.264 : Max. 60fps/50fps(60Hz/50Hz)
Iris	DC auto iris
Sensitivity	Color: 0.05 lux(F1.6, 1/30sec) B/W: 0.005 lux(F1.6, 1/30sec)
Shutter Speed	Minimum / Maximum / Anti flicker (2~1/12,000sec)
White Balance	ATW / AWC / Manual / Indoor / Outdoor
Wide Dynamic range	WDR
Noise Reduction	SSNR V
Event Trigger	Analytics, Network disconnect, Alarm input
Analytics	Defocus detection, Directional detection, Fog detection, Face detection, Motion detection, Digital auto tracking, Appear/Disappear, Enter/Exit, Loitering, Tampering, Virtual line
Lens	4.44~142.6mm(32x) motorized, F1.6(Wide) ~ F4.4(Tele)
Local Storage	Micro SD/SDHC/SDXC 1slot 256GB
Network Storage	NAS

NETWORK

Interface	RJ-45(10/100BASE-T)
Security	HTTPS(SSL) Login Authentication, Digest Login Authentication. IP Address Filtering, User access Log, 802.1X Authentication (EAP-TLS, EAP-LEAP)
Onvif	ONVIF Profile S/G/T
Protocols	IPv4, IPv6, TCP/IP, UDP/IP, RTP(UDP), RTP(TCP), RTCP, RTSP, NTP, HTTP, HTTPS, SSL/TLS, DHCP, FTP, SMTP, ICMP, IGMP, SNMPv1/v2c/v3(MIB-2), ARP, DNS, DDNS, QoS, PIM-SM, UPnP, Bonjour, LLDP, SRTP

CERTIFICATIONS

Ingress Protection Rating	EN 60529 (IP66/IP67) ⊕ II 2 G Ex db op pr IIC T6 Gb -40°C ≤ Tamb ≤ +60°C ⊕ II 2 D Ex tb IIIC T85°C Db -40°C ≤ Tamb ≤ +60°C ⊕ II 2 G Ex db op pr IIB T5 Gb -40°C ≤ Tamb ≤ +75°C ⊕ II 2 D Ex tb IIIC T100°C Db -40°C ≤ Tamb ≤ +75°C
ATEX/UKEX Standards	EN60079-0; EN60079-1; EN60079-28; EN60079-31
IECEX Standards	IEC 60079-0; IEC 60079-1; IEC 60079-28; IEC 60079-31
INMETRO	ABNT NBR IEC 60079-0; ABNT NBR IEC 60079-1; ABNT NBR IEC 60079-28; ABNT NBR IEC 60079-31
EMC	EN 50130-4; EN 55035 ; EN/IEC 61000-6-2 ; EN/IEC 61000-6-4
LVD	EN 60950-1; EN 60950-22
RoHS	2011/65/EU + 2015/863/EU (RoHS 3)
WEEE	2012/19/EU

MODELS

EXF129WRTH02-C2M/24	Fixed camera station, MEDIUM size, wiper, 24VAC
EXF129WRTH02-C2M/115	Fixed camera station, MEDIUM size, wiper, 115VAC
EXF129WRTH02-C2M/230	Fixed camera station, MEDIUM size, wiper, 230VAC

All the above models include WISENET XNZ-L6230 camera, sunshield, heater, and telemetry receiver.
Available upon request:
- built-in Single Mode fiber optic Media Converter
- without wiper

PRE-ASSEMBLED CONDUIT TAILS

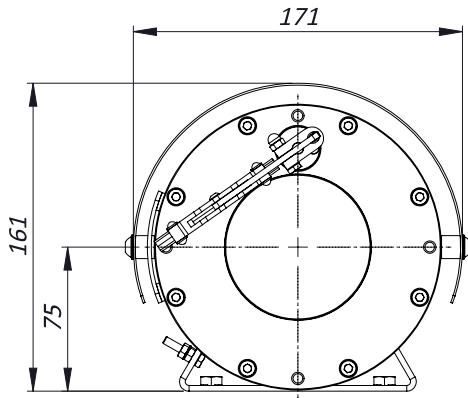
EXACCTF3-A	3 meters armored composite cable tail (power, Ethernet, data) with 2x M25 barrier nickel plated brass glands.
EXACCTF3-C	3 meters armored composite cable tail (power, data, fiber optic) with 2x M25 barrier nickel plated brass glands. Fiber termination: SC
EXACCTF5-A	5 meters armored composite cable tail (power, Ethernet, data) with 2x M25 barrier nickel plated brass glands.
EXACCTF5-C	5 meters armored composite cable tail (power, data, fiber optic) with 2x M25 barrier nickel plated brass glands. Fiber termination: SC
EXACCTF10-A	10 meters armored composite cable tail (power, Ethernet, data) with 2x M25 barrier nickel plated brass glands.
EXACCTF10-C	10 meters armored composite cable tail (power, data, fiber optic) with 2x M25 barrier nickel plated brass glands. Fiber termination: SC

ACCESSORIES

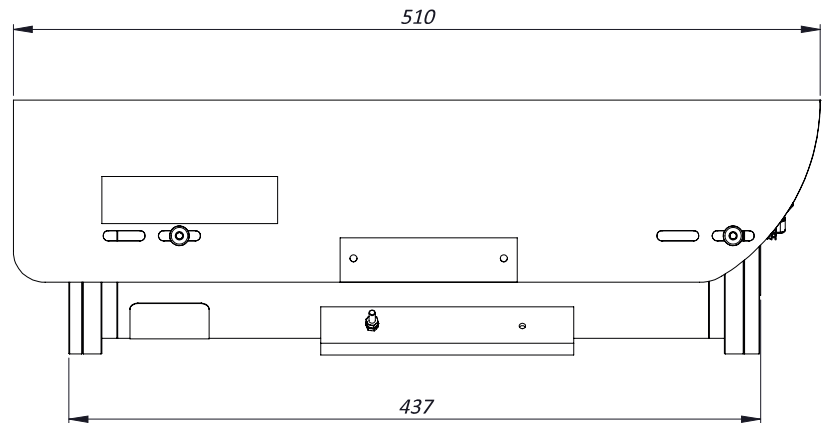
SSBK-M	Wall mounting bracket
SSPM-M	Pole mount adapter for SSBK-M
SSPTM-M	Top pole mount adapter

DIMENSIONS

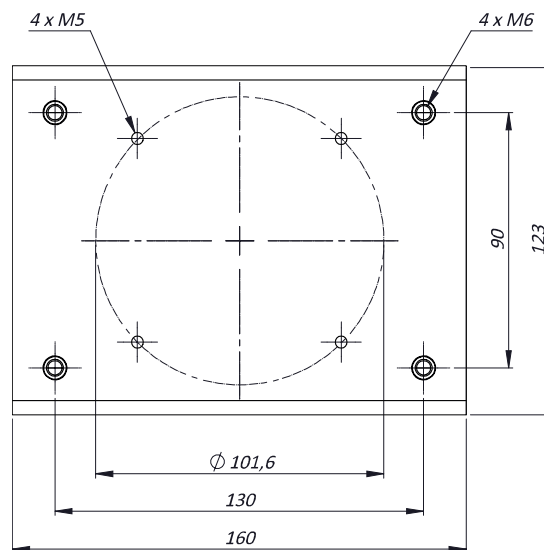
FRONT VIEW



SIDE VIEW



MOUNTING PATTERN



MAX EXTERNAL LENGTH

Model	L1 [mm]	L2 [mm]
EXF129WRTH02-C2M/24	510	437
EXF129WRTH02-C2M/115	510	437
EXF129WRTH02-C2M/230	510	437

*This is only an example of integration of Wisenet camera in Tecnovideo products.
Hanwha Trademark and company logos, marks, product names and emblems are registered trademarks and belong to Hanwha Corporation.*