

TECNOVIDEO

CCTV SYSTEMS AND ACCESSORIES

EXPTZTV2 SERIES

STAINLESS STEEL PTZ CAMERA STATION



HAZARDOUS AREA

AISI316L STAINLESS STEEL CONSTRUCTION
FOR USE IN HIGHLY CORROSIVE ENVIRONMENTS
WEATHERPROOF STANDARD IP66/IP67
UP TO 2065x1553 @30FPS
33x OPTICAL ZOOM, AUTO FOCUS
SUITABLE FOR DIRECT OPTICAL FIBER CONNECTION
ONVIF PROFILE G/S/T COMPLIANT



TECHNICAL SPECIFICATIONS

GENERAL & MECHANICAL

Dimensions	See drawings next page
Operating Temperature	-20° +60°C (-4° +140° F)
Construction	AISI316L Stainless Steel
Finish	Electro-polished
Mounting	4x Ø11 on 195 PCD
Cable entries	1x M25x1,5 cable entry
Pan Angle	360° (continuous rotation) or 350° (+/-175°)
Pan Speed	0 – 36°/second
Pan Torque	80Nm
Tilt Angle	180° (+/-90°)
Tilt Speed	0 – 18°/second
Tilt Torque	107Nm
Rotation angle	Electronically adjustable
Backlash	<0,1°
Max preset accuracy	0.04°
Weight	Unit: 33,5kg / Package: 37,5kg

ELECTRICAL

Supply voltage	24V~, 115V~, 230V~ (+/-10%)
Power consumption	95W MAX

Thermostatically controlled heater
T[°C] ON = 12 ± 4°C, T[°C] OFF = 20 ± 3°C

VIDEO/CAMERA

Sensor	1/2.8" Progressive CMOS, 3MP
Compression	M-JPEG/H.264/H.265
Streaming	Up to 4 configurable streams
Resolution	Up to 2065x1553 @30fps
Sensitivity	Color: 0.04 lux, B/W: 0.002 lux
Dynamic range	High Dynamic Range (HDR)
Lens	33x Optical Zoom, AF, P-Iris, Auto-Iris; 4.6-152mm; F1.6
Image settings	Color, Brightness, Sharpness, Contrast, White Balance, Exposure control, 2DNR/3DNR/NR by motion masking
Event Triggers	External Input, Analytics, Network Failure Detection, Periodical Event, Manual Trigger

NETWORK

Interface	10/100 Mbps Ethernet
Connectivity	ONVIF profile G/S/T compliant
Protocols	IPV4/V6, TCP, UDP, RTP, RTSP, HTTP, HTTPS, ICMP, FTP, SMTP, DHCP, PPPoE, UPnP, IGMP, SNMP, QoS, ARP, NTP, DDNS

CERTIFICATIONS

Ingress Protection Rating	EN 60529 (IP66/IP67) ⊕ II 2 G Ex db op pr IIC T6 Gb -40°C ≤ Tamb ≤ +60°C ⊕ II 2 D Ex tb IIIC T85°C Db -40°C ≤ Tamb ≤ +60°C ⊕ II 2 G Ex db op pr IIB T5 Gb -40°C ≤ Tamb ≤ +75°C ⊕ II 2 D Ex tb IIIC T100°C Db -40°C ≤ Tamb ≤ +75°C
ATEX Standards	EN 60079-0:2012; EN 60079-1:2014; EN 60079-28:2015; EN 60079-31:2014
IECEX Standards	IEC 60079-0:2011; IEC 60079-1:2014-06; IEC 60079-28:2015; IEC 60079-31:2013
EMC	EN 61000-6-3:2007; EN 50130-4:1995 + A1:1998 + A2:2003
LVD	EN 60950-1:2006 + A11:2009
RoHS	2011/65/EU
WEEE	2012/19/EU

MODELS

EXPTZTV2/24	EXPTZTV2 camera station, 350° (+/-175°) pan rotation. 24V~
EXPTZTV2-CR/24	EXPTZTV2 camera station, 360° continuous pan rotation. 24V~
EXPTZTV2/115	EXPTZTV2 camera station, 350° (+/-175°) pan rotation. 115V~
EXPTZTV2-CR/115	EXPTZTV2 camera station, 360° continuous pan rotation. 115V~
EXPTZTV2/230	EXPTZTV2 camera station, 350° (+/-175°) pan rotation. 230V~
EXPTZTV2-CR/230	EXPTZTV2 camera station, 360° continuous pan rotation. 230V~

All the above PTZ camera stations include sunshield, heater, integrated wiper, a built-in telemetry receiver, variable speed motors, fixed cable entry 1x M25x1,5 on a base mount junction box.

Available upon request: fiber optic.

PRE-ASSEMBLED CONDUIT/CABLE TAILS

EXCTN25IP3	3 metres 25mm Ethernet conduit tail + 2x M25 nickel plated brass glands
EXCTN25IP5	5 metres 25mm Ethernet conduit tail + 2x M25 nickel plated brass glands
EXCTN25IP10	10 metres 25mm Ethernet conduit tail + 2x M25 nickel plated brass glands
EXACCTF3	3 meters armoured composite cable tail + 2x M25 barrier nickel plated brass glands
EXACCTF5	5 meters armoured composite cable tail + 2x M25 barrier nickel plated brass glands
EXACCTF10	10 meters armoured composite cable tail + 2x M25 barrier nickel plated brass glands

MOUNTING ACCESSORIES

EXSSBKPTZ	Wall mounting bracket
------------------	-----------------------

ACCESSORIES AND SPARE PARTS

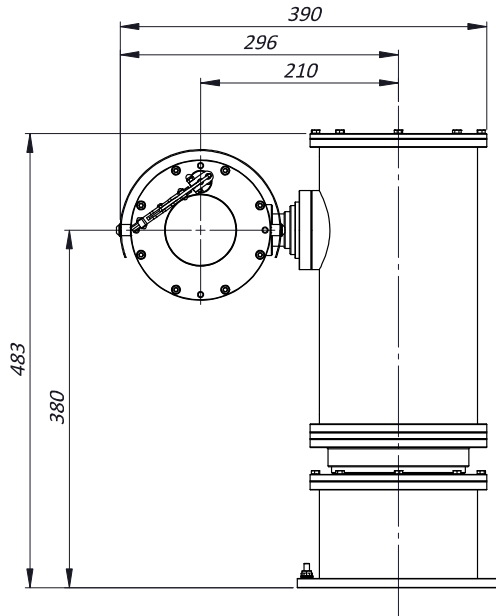
RX250DC-EVO	Telemetry receiver for EXPTZTV2 Series with 360° continuous pan rotation.
RX250DC-EVO-NOCR	Telemetry receiver for EXPTZTV2 Series with 350° pan rotation.

www.tecnovideocctv.com

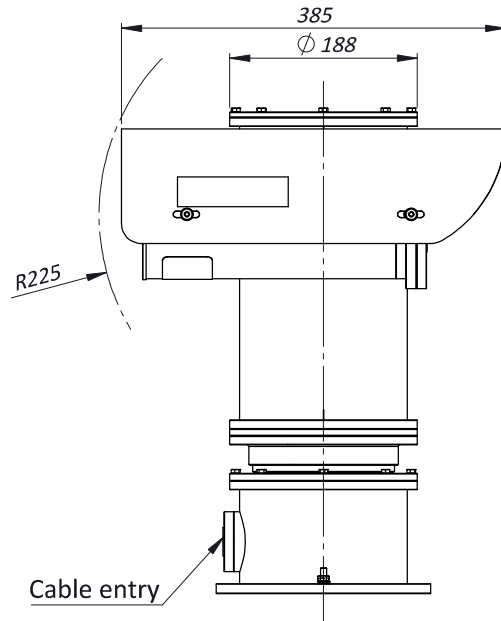
Tecnovideo S.r.l. - Via A. De Gasperi, 3 36030 Villaverla (VI) ITALY - Tel. +39.0445.350444 - info@tecnovideocctv.com

DIMENSIONS

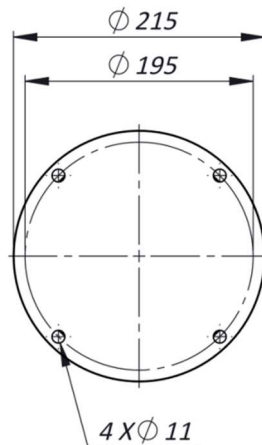
EXPTZ FRONT VIEW



EXPTZ SIDE VIEW



MOUNTING PATTERN



The unit cannot be installed upside-down nor horizontally