



tekno system[®]
by TECNOVIDEO



CHEP SERIES

EXPLOSION PROOF CAMERA HOUSING

HAZARDOUS AREA

ANTICORODAL ALUMINIUM CONSTRUCTION
WEATHERPROOF STANDARD IP66/IP67
AVAILABLE FOR CUSTOMER SPECIFIED CAMERAS
SUITABLE FOR ANALOG AND IP CAMERAS
DAY/NIGHT AND IR THERMAL VERSIONS AVAILABLE
SUITABLE FOR DIRECT OPTICAL FIBER CONNECTION



CHEP+BWXXH CAMERA HOUSING WITH WALL MOUNTING BRACKET

TECHNICAL SPECIFICATIONS

GENERAL & MECHANICAL

Dimensions	See drawings next page
Operating Temperature	-20°C +50°C (-4° +122°F) -50° +50°C (-58° +122°F) for CHEP-LT version
Construction	Anticorodal Aluminium
Finish	Blue Anodized
Cable entries	2x M25x1,5 cable entries

2x 3/4" NPT cable entries version is available upon request

Weight Unit: 11kg / Package: 12kg

ELECTRICAL

Thermostatically controlled heater	
T[°C] ON	= 15 ± 5°C, T[°C] OFF = 22 ± 4°C
Available voltages	24V~, 230V~ (+/- 10%)
Max power consumption	60W

CERTIFICATION

Ingress Protection	EN 60529 (IP66/IP67) for all models
Rating	⊕II 2 G Ex db IIC T6 Gb ⊕II 2 D Ex tb IIIC T85°C Db ⊕II 2 G Ex db op pr IIC T6 Gb* ⊕II 2 D Ex tb op pr IIIC T85°C Db* <i>* for version with fiber optic.</i>
Certified temperature	-20°C +50°C (-4° +122°F) -50° +50°C (-58° +122°F) for CHEP-LT version
ATEX standards	EN 60079-0:2012 + A11:2013; EN 60079-1:2014; EN 60079-28:2015; EN 60079-31:2014
IECEx Standards	IEC 60079-0:2011; IEC 60079-1:2014-06; IEC 60079-28:2015; IEC 60079-31:2013
EMC	EN 61000-6-3:2007; EN 50130-4:1995 + A1:1998 + A2:2003
LVD	EN 60950-1:2006 + A11:2009
RoHS	2011/65/EU
WEEE	2012/19/EU

MODELS

CHEP/24¹	Housing + heater. Supply voltage: 24V~
CHEP/230¹	Housing + heater. Supply voltage: 230V~
CHEP-LT/24¹	Housing + heater for low temperature. Supply voltage: 24V~
CHEP-LT/230¹	Housing + heater for low temperature. Supply voltage: 230V~
CHEP-IR/24²	Housing+ heater + Germanium window + protective grid. Supply voltage: 24V~
CHEP-IR/230²	Housing + heater + Germanium window + protective grid. Supply voltage: 230V~

¹ Usable front window: 105mm (toughened glass)

² Usable front window: 45mm (Germanium with Hard Carbon Coating)

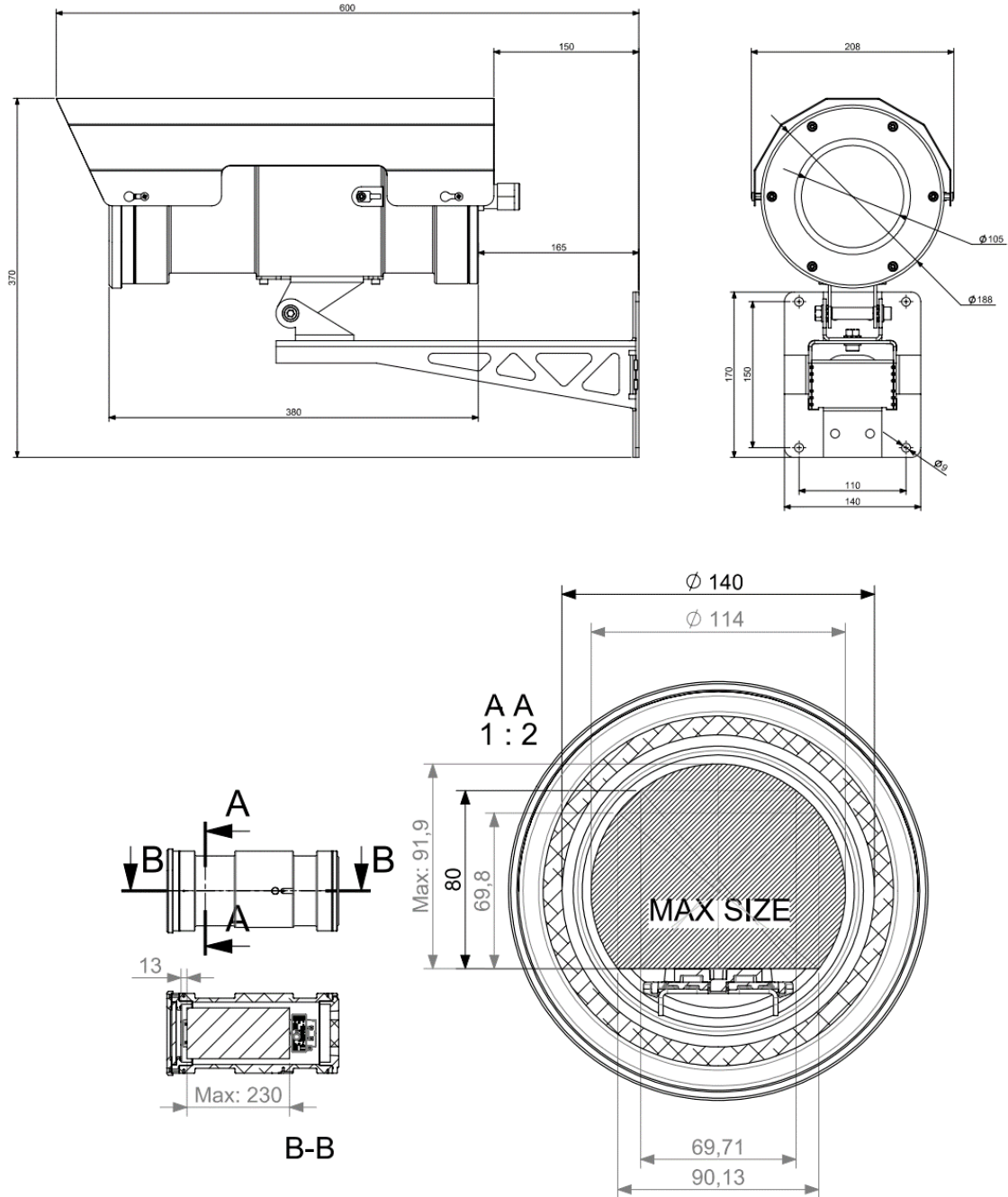
PRE-ASSEMBLED CONDUIT/CABLE TAILS

EXCTN25AN3	3 metres 25mm analog conduit tail + 2x M25 nickel plated brass glands
EXCTN25AN5	5 metres 25mm analog conduit tail + 2x M25 nickel plated brass glands
EXCTN25AN10	10 metres 25mm analog conduit tail + 2x M25 nickel plated brass glands
EXCTN25IP3	3 metres 25mm Ethernet conduit tail + 2x M25 nickel plated brass glands
EXCTN25IP5	5 metres 25mm Ethernet conduit tail + 2x M25 nickel plated brass glands
EXCTN25IP10	10 metres 25mm Ethernet conduit tail + 2x M25 nickel plated brass glands
EXACCTF3	3 meters armoured composite cable tail + 2x M25 barrier nickel plated brass glands
EXACCTF5	5 meters armoured composite cable tail + 2x M25 barrier nickel plated brass glands
EXACCTF10	10 meters armoured composite cable tail + 2x M25 barrier nickel plated brass glands

MOUNTING ACCESSORIES

SSXEP	Stainless steel sunshield for CHEP Series
BWXHX	Stainless steel wall mounting bracket + swivel joint for CHEP Series
PAX	Stainless steel pole mount adapter for BWXXH
CMX	Corner mount adapter for BWXXH

DIMENSIONS



MAX INTERNAL USABLE AREA

Model	Max internal dimensions [mm]	Max usable internal diameter [mm]
CHEP	80x70x230	114