

TECNOVIDEO

CCTV SYSTEMS AND ACCESSORIES

168 SERIES

LARGE STAINLESS STEEL FIXED CAMERA HOUSING

SAFE AREA

- LARGE CAMERA HOUSING
- AISI316L STAINLESS STEEL CONSTRUCTION
- FOR USE IN HIGHLY CORROSIVE ENVIRONMENTS
- INTEGRATED WIPER VERSION AVAILABLE
- WEATHERPROOF STANDARD IP66/IP67
- SUITABLE FOR ANALOG AND IP CAMERAS
- VISIBLE DAY/NIGHT AND THERMAL VERSIONS AVAILABLE



TECHNICAL SPECIFICATIONS

GENERAL & MECHANICAL

Dimensions	See drawings next page
Operating Temperature	-40°C +60°C, +75°C peak (-40°F +140°F, +167°F peak)
Construction	AISI316L Stainless Steel
Window	Optical glass (visible), Germanium (thermal)
Finish	Electro-polished
Mounting	See drawings next page
Cable entries	4 M20x1,5 nickel plated brass cable glands (included) Standard cable diameter 5-10mm

Wiper	Yes
Weight	
Model	Unit [kg] Package [kg]
168SH/168SHIR	11 13
168WW	12 14

ELECTRICAL

Thermostatically controlled heater	T[°C] ON = 12 ± 4°C, T[°C] OFF = 20 ± 3°C
Available voltages	24VAC/DC, 230VAC (+/-10%)
Power consumption	15W

CERTIFICATIONS

Ingress Protection (EN 60529)	IP66/IP67
EMC	EN 50130-4; EN/IEC 61000-6-2; EN/IEC 61000-6-4
LVD	EN 60950-1; EN 60950-22
RoHS	2011/65/EU + 2015/863/EU (RoHS 3)
WEEE	2012/19/EU

MODELS

168SH/24¹	Fixed housing, with sunshield and 24VAC/DC heater
168SH/230¹	Fixed housing, with sunshield and 230VAC heater
168WW/24²	Fixed housing, with sunshield, wiper and heater, 24VAC
168WW/230²	Fixed housing, with sunshield, wiper and heater, 230VAC
168SHIR70/24³	Fixed housing, with sunshield and 24VAC/DC heater. Germanium window Ø: 70mm
168SHIR70/230³	Fixed housing, with sunshield and 230VAC heater. Germanium window Ø: 70mm
168SHIR110/24⁴	Fixed housing, with sunshield and 24VAC/DC heater. Germanium window Ø: 110mm
168SHIR110/230⁴	Fixed housing, with sunshield and 230VAC heater. Germanium window Ø: 110mm
168SHIR570/24	Fixed housing, with sunshield and heater, 24VAC/DC. SAPPHIRE window Ø: 70mm
168SHIR570/230	Fixed housing, with sunshield and heater, 230VAC. SAPPHIRE window Ø: 70mm
168SHIR5100/24	Fixed housing, with sunshield and heater, 24VAC/DC. SAPPHIRE window Ø: 100mm
168SHIR5100/230	Fixed housing, with sunshield and heater, 230VAC. SAPPHIRE window Ø: 100mm

¹ Usable front window diameter: 130 mm, thickness: 5 mm. Tempered glass

² Usable front window diameter: 104 mm. Thickness: 12 mm. Vandal resistant glass

³ Usable front window diameter: 70 mm. Thickness: 3 mm. Germanium, AR/DLC coating

⁴ Usable front window diameter: 110 mm. Thickness: 3 mm. Germanium, AR/DLC coating

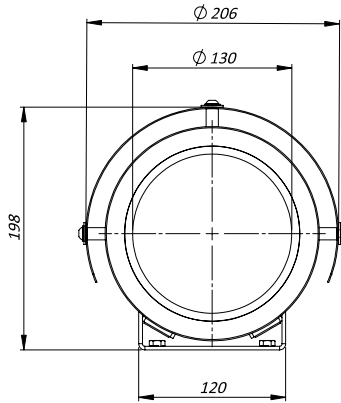
ACCESSORIES

SSBK-M	Wall mounting bracket
SSPM-M	Pole mount adapter for SSBK-M
RX24IO	Telemetry receiver for wash/wipe models, RS485, PELCO D protocol. 12VDC, 1A output for camera supply. Operating voltage: 24VAC. Installed inside the housing.
PSU01	Power supply 230VAC/24VAC installed inside the housing.
PSU02	Power supply 115-230VAC/12VDC installed inside the housing.
SPL01	PoE+ Splitter installed inside the housing (only for models without wiper).

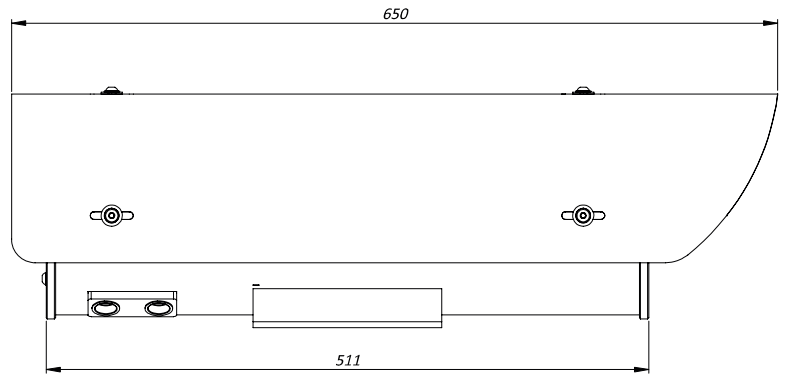
LARGE STAINLESS STEEL FIXED CAMERA HOUSING

DIMENSIONS

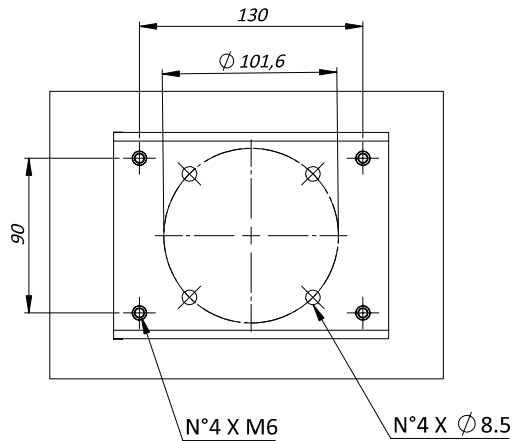
FRONT VIEW



SIDE VIEW



MOUNTING PATTERN



FOR "A" VALUES CHECK "MODELS" SECTION

MAX EXTERNAL LENGTH

Model	L1 [mm]	L2 [mm]
168SH/24 ¹	650	511
168SH/230 ¹	650	511
168WW/24 ²	650	511
168SHIR70/24 ³	650	511
168SHIR70/230 ³	650	511
168SHIR110/24 ⁴	650	511
168SHIR110/230 ⁴	650	511
168SHIRS70/24	650	511
168SHIRS70/230	650	511
168SHIRS100/24	650	511
168SHIRS100/230	650	511

MAX INTERNAL USABLE AREA

Model	Max internal dimensions [mm]	Max usable internal diameter [mm]
168SH	96x96x348	131
168WW	96x96x348	131