

VSPT250 Series

Stainless Steel Pan & Tilt



Preserve this manual as a reference for future needs.



Used electrical, electronic and stainless steel products should not be mixed with general waste.
For proper treatment, recovery and recycling of old products, please take them to applicable collection points, in accordance with your national legislation and the Directives 2002/95/EC and 2002/96/EC.
By disposing of these products correctly, you will help to save valuable resources and prevent any potential negative effects on human health and the environment which could otherwise arise from inappropriate waste handling.
For more information about collection and recycling of old products, please contact your local municipality or your waste disposal service.
Penalties may be applicable for incorrect disposal of this waste, in accordance with national legislation.

The manufacturer is not to be held responsible for any damage resulting from failure to observe the installation standards and the instructions contained in the present manual.

The descriptions and illustrations contained in the present manual are not binding. The manufacturer reserves the right to make any alterations deemed appropriate for the technical, manufacturing and commercial improvement of the product, while leaving the essential product features unchanged, at any time and without undertaking to update the present publication.

The manufacturer declines all responsibility for any consequences resulting from improper use of the product, or use which is different from that expected and specified in the present documents.

TECNOVIDEO S.r.l.

Via San L. Murialdo, 8 36030 Villaverla (VI) ITALY

Tel. +39.0445.350444 Fax +39.0445.357259

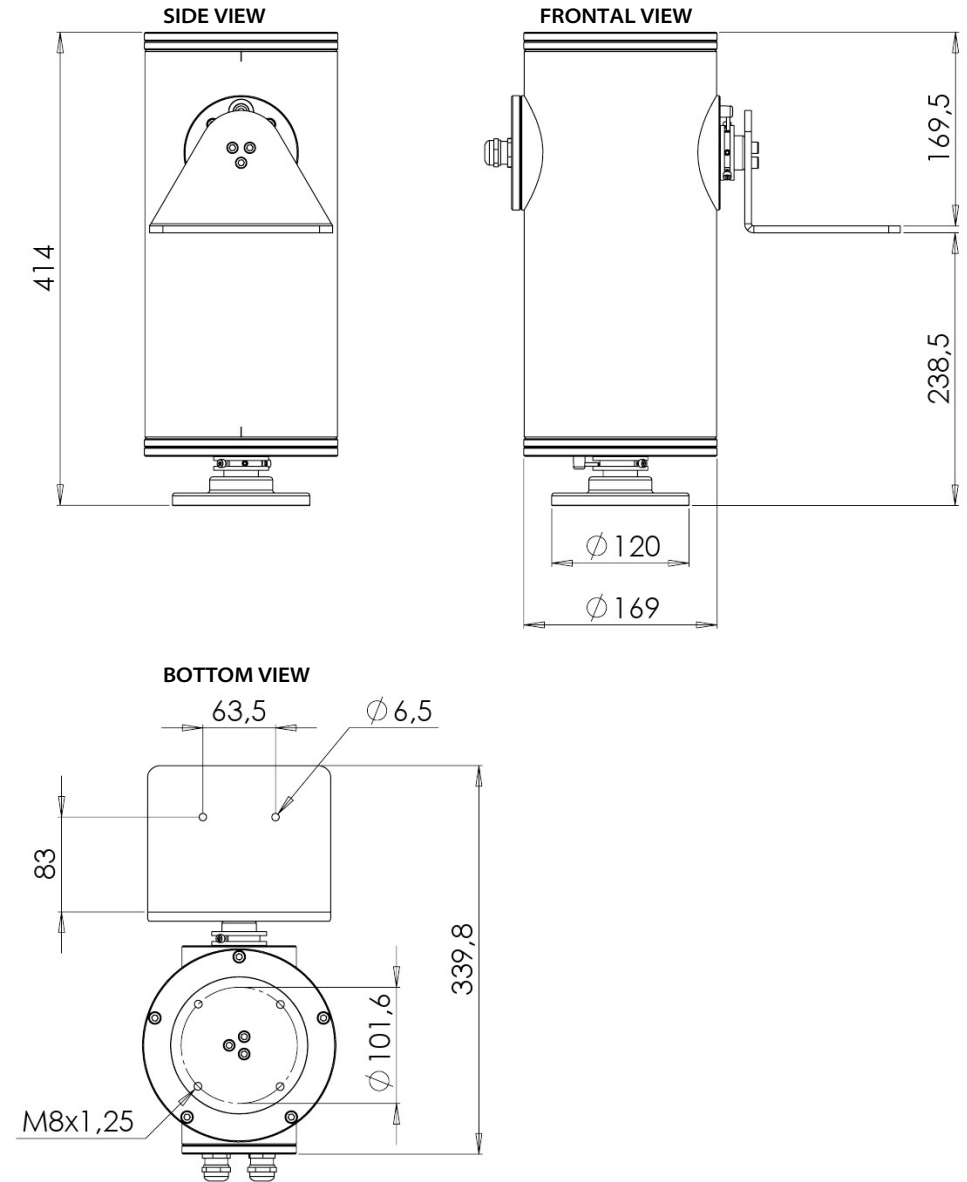
e-mail: info@tecnovideocctv.com – www.tecnovideocctv.com

Installation manual

TABLE OF CONTENTS

	<i>Page</i>
DESCRIPTION	03
<i>Models</i>	03
<i>Contents of Package</i>	03
<i>Suggested tools</i>	03
INSTALLING THE UNIT	03
<i>Mechanical assembly</i>	03
<i>Electrical Connections</i>	05
<i>Electrical installation practices</i>	05
<i>Default Position</i>	06
<i>Setting Pan and Tilt limits</i>	06
<i>Default limits</i>	06
<i>Changing the default limits</i>	06
DIMENSIONS	07

DIMENSIONS



Dimensions in millimetres – Tolerances according QMS – Design and product specifications subject to change without notice

Default Position

The unit is in its default position when viewed from back:
- the camera housing is placed on the right, with the rear flange toward the user;
- the cable glands of the unit are placed on the left.

Setting Pan and Tilt limits

The Pan and Tilt unit features a manual adjustable setting of both pan and tilt movement, being provided with two adjustable end stop switches for each motion. This setting is necessary to set the desired work angle. The setting is performed without opening the unit.

Do not try to position manually the unit by forcing pan and/or tilt movements because it may seriously damage the gears inside the unit.

Default limits

The unit is set with default values to achieve the following angles:

- 90° Pan left angle
- 90° Pan right angle
- 15° Tilt up angle
- 90° Tilt down angle

Changing the default limits

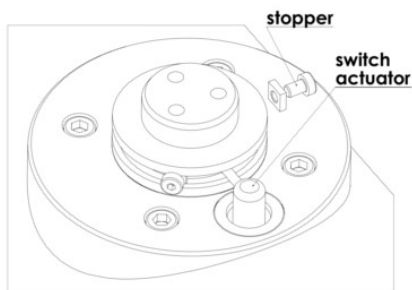
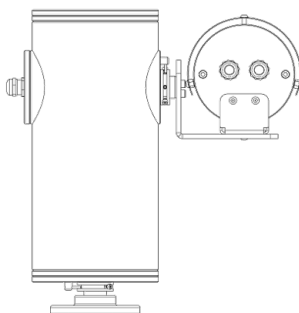
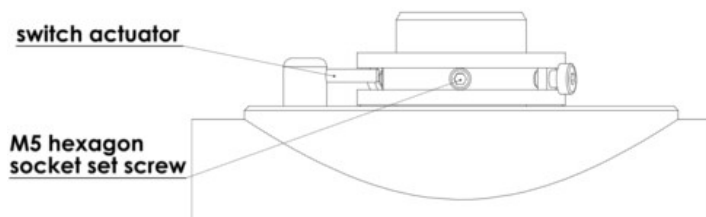
1. Loose the PAN stoppers (M4 screws) but do not remove them so it is possible to adjust the position of the stoppers according to the work needs.
2. Power and drive the unit to the required maximum pan position.
3. Move the relative loose stopper until it is able to stop the switch actuator by activating the microswitch inside the unit.
4. Tighten the stopper to fix the limit.
5. Repeat the same operations to set the opposite PAN limit.
6. Repeat all the above operations to set TILT UP and TILT DOWN limits.

Note: Movement to the RIGHT is when the unit rotates clockwise (viewed from above), while movement to the LEFT is anti clockwise (from above).

DO NOT REMOVE the M5 hexagon socket set screw shown in the picture

Remove one stopper to achieve a maximum 352° pan and tilt rotation

DO NOT REMOVE both stoppers at the same time



DESCRIPTION

A reliable Pan & Tilt unit is a key feature in video surveillance systems which need to video a wide or a dynamic location. This is why the **VSPT Series** Pan & Tilt unit is the best choice, especially for Offshore, Marine, Heavy and Food Industry and for every situation where corrosive agents may rapidly damage standard aluminum-steel units.

Models

VSPT250

Variable Speed Pan & Tilt unit, IP67, 24 VDC motors

Contents of Package

The **VSPT250** package contains:

1x	Pan & Tilt unit	4x	M8 washers (UNI 1751 B)
1x	Installation Manual	2x	Cable glands
1x	Side bracket	1x	Hex key for M4 screw
4x	M8x25 screws	1x	Hex key for M6 screw
3x	M6x16 screws	1x	Hex key for M8 screw

Suggested tools

A flat screwdriver is suggested to install the **VSPT250** Pan & Tilt unit.

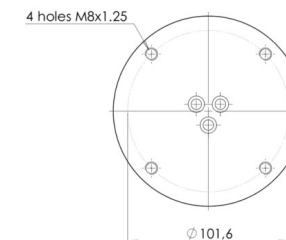
INSTALLING THE UNIT

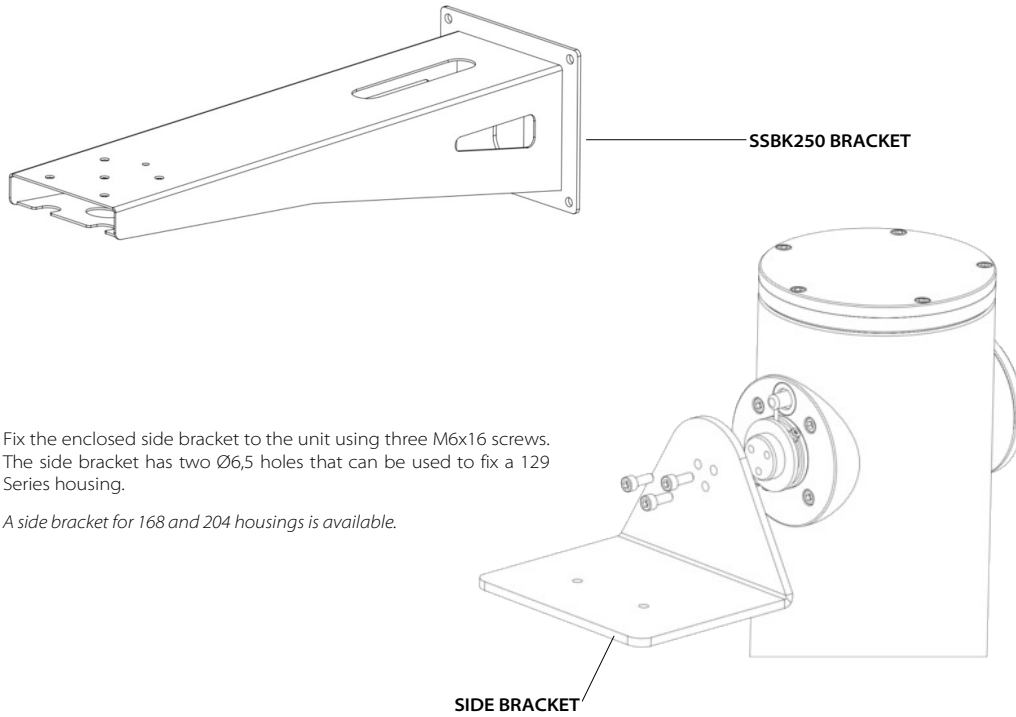
	Prior to installation and operation, read carefully this manual of instructions.
	Make sure that the place where the housing will be placed can support the unit in normal operating conditions. Make sure the installation is secure (it must be assured at least the support of 3 times its weight).
	No particular maintenance is needed.
	Operating temperature: -20° +55° C (-4° +131° F).
	Before performing any operation, turn off the power. Only qualified personnel can perform electrical operations according the regulations in force.
	A device must be installed for isolating the appliance from the power supply with a opening distance between the contacts at least of 3 mm). A 2 A blow fuse must also be installed for protection.
	For connection to the mains, use a multipolar cable having minimum 3x0,75 mm ² (18 AWG). The main cable must be at least protected by an ordinary PVC sheath.
	Fasten all the cables inside the housing with cables ties or other fixing means to avoid the electrical contact with surrounding parts in case that terminal blocks screw off.

Mechanical assembly

The unit can be mounted on its appropriate SSBK250 bracket using four M8x1,25 holes arranged on Ø101,6 mm and placed on the bottom plate of the unit. Otherwise, arrange consequently the plane where the unit is meant to be mounted and make sure that it is solid and it can adequately support the weight of the unit and of the camera housing (including the camera and lens).

BOTTOM PLATE

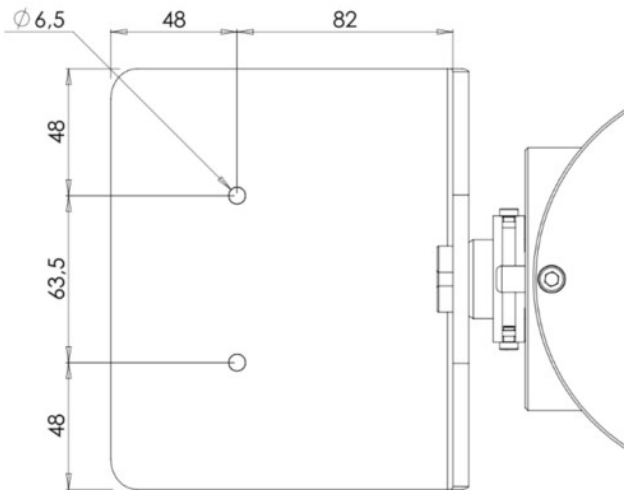




Fix the enclosed side bracket to the unit using three M6x16 screws. The side bracket has two Ø6,5 holes that can be used to fix a 129 Series housing.

A side bracket for 168 and 204 housings is available.

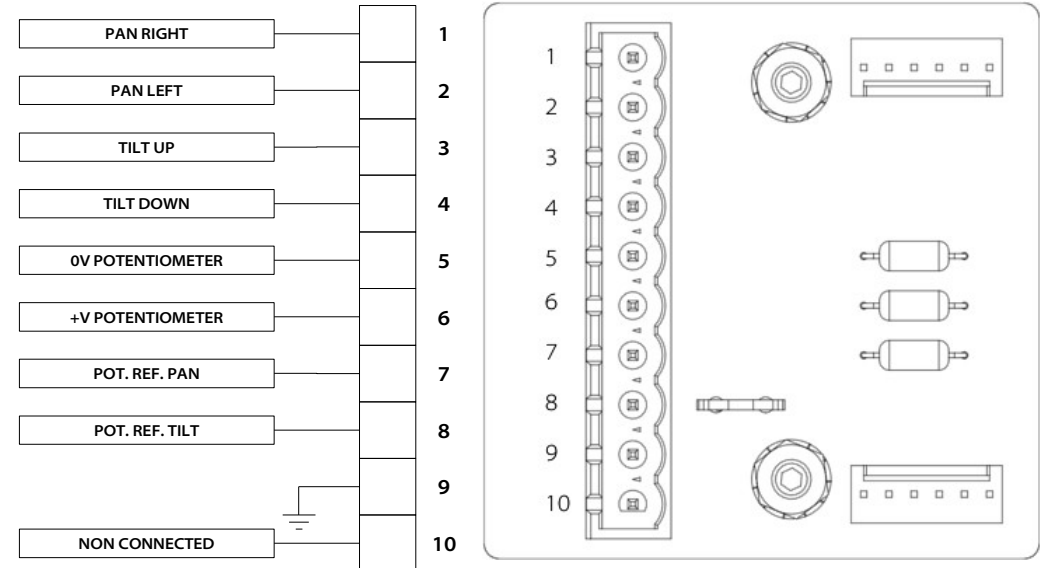
129 SERIES SIDE BRACKET DIMENSIONS



Electrical Connections

Perform electrical connections according to the following connector scheme:

M1 P&T MAIN CONNECTOR



To move RIGHT the unit, apply up to +24 VDC between pin 1 (+24 VDC) and 2 (GND).
 To move LEFT the unit, apply up to +24 VDC between pin 2 (+24 VDC) and 1 (GND).
 To move UP the unit, apply up to +24 VDC between pin 3 (+24 VDC) and 4 (GND).
 To move DOWN the unit, apply up to +24 VDC between pin 4 (+24 VDC) and 3 (GND).
 When using preset positioning, +5 VDC may be applied between pin 6 (+5V) and 5 (GND).

	Incorrect Power Supply Voltage may damage the unit.
--	--

Electrical installation practices

	Always use color-coded or numbered conductors for wiring and identification ease at a later date.
	Tighten the cable glands up to a 8 Nm torque ratio.