

129 Series

Medium size Stainless Steel Camera Housing



Preserve this manual as a reference for future needs.



Used electrical, electronic and stainless steel products should not be mixed with general waste.
For proper treatment, recovery and recycling of old products, please take them to applicable collection points, in accordance with your national legislation and the Directives 2002/95/EC and 2002/96/EC.
By disposing of these products correctly, you will help to save valuable resources and prevent any potential negative effects on human health and the environment which could otherwise arise from inappropriate waste handling.
For more information about collection and recycling of old products, please contact your local municipality or your waste disposal service.
Penalties may be applicable for incorrect disposal of this waste, in accordance with national legislation.

The manufacturer is not to be held responsible for any damage resulting from failure to observe the installation standards and the instructions contained in the present manual.

The descriptions and illustrations contained in the present manual are not binding. The manufacturer reserves the right to make any alterations deemed appropriate for the technical, manufacturing and commercial improvement of the product, while leaving the essential product features unchanged, at any time and without undertaking to update the present publication.

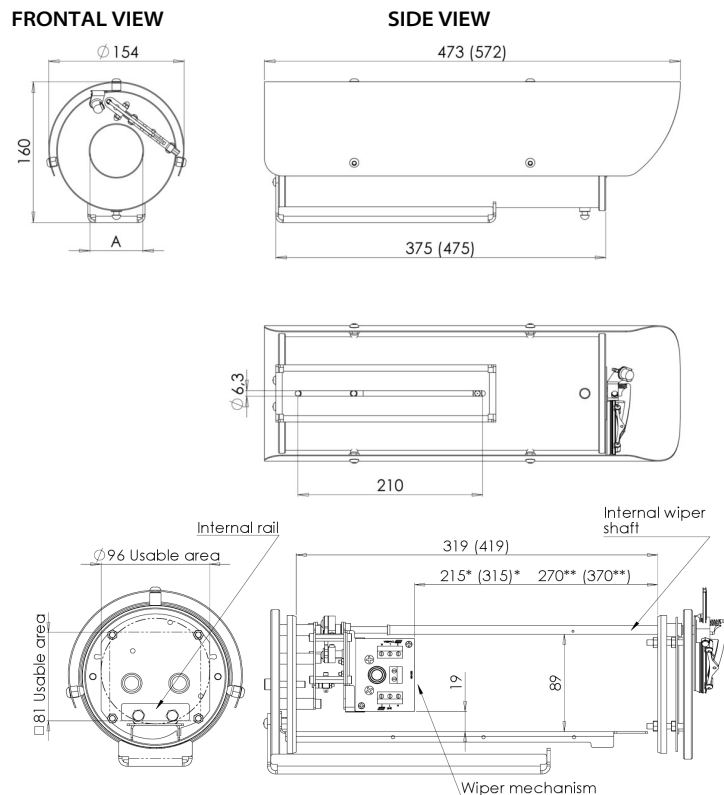
The manufacturer declines all responsibility for any consequences resulting from improper use of the product, or use which is different from that expected and specified in the present documents.

TECNOVIDEO S.r.l.

Via San L. Murialdo, 8 36030 Villaverla (VI) ITALY
Tel. +39.0445.350444 Fax +39.0445.357259
e-mail: info@tecnovideocctv.com – www.tecnovideocctv.com

Installation manual

DIMENSIONS



Dimensions in brackets refer to models 129-L

Available measures for "A"

A = **90** mm for 129, 129-L, 129SH and 129SH-L

A = **72** mm for 129WW and 129WW-L

A = **70** mm for 129IR70 models (germanium window), 129AB and 129AB-L

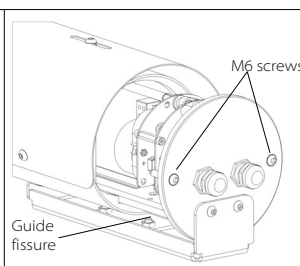
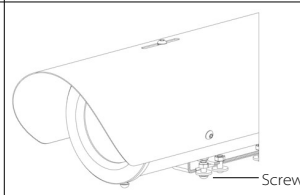
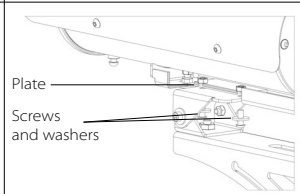
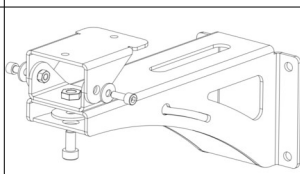
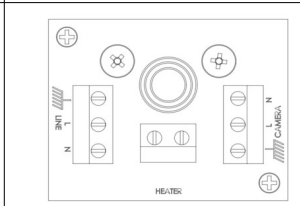
A = **50** mm for 129IR50 models (germanium window)

* Length measure for models with sunshield, heater and wash wiper

** Length measure for models with sunshield and heater

Dimensions in millimetres – Tolerances according QMS – Design and product specifications subject to change without notice

<p>1. Opening the housing. Loosen the screw at the bottom of the external rail. The screw is fixed to a nut welded on the housing.</p>	<p>Screw</p>
<p>2. Extract the housing outer body by screwing off the two M6 screws, then slide it away from the back flange. Be careful not to lose screws and washers.</p>	<p>Washer Screw</p>
<p>3. Hang the housing by the pin to the corresponding slot on the bracket in order to perform electrical connections and maintenance inside the housing.</p>	<p>Pin Slot</p>
<p>4. Installing the camera. Install the camera on the internal rail using one of the 1/4" screws supplied, the plastic washer and one or more spacers to be put under the camera to adjust its height position.</p>	<p>Spacer Washer Screw</p>
<p>5. Feed the cables through the cable glands and make the electrical connections. Tighten the cable glands up to a 8 Nm torque ratio. Cable glands are situated on the rear flange.</p>	<p>Cable glands</p>

<p>6. Closing the housing. Slide the housing outer body along the internal rail. The internal rail is to be inserted in the guide fissure as shown in the picture. Tighten the two M6 screws to the main body.</p>	
<p>7. Fix the M6 screw to fasten the housing to the bracket.</p>	
<p>8. Mounting the housing on the bracket. Fix the two screws on the apposite plate situated between the housing outer body and external rail.</p>	
<p>9. Fix the swivel joint to the bracket with a M8 screw using the key supplied. Adjust the position of the housing by using the three M8 screws shown in the picture. The three corresponding nuts are welded on swivel joint.</p>	
<p>10. Only on housings with heater system. Perform the input and output (to the camera) voltage connections using the PCB installed inside the housing near the rear flange.</p>	

11. Only on housings with wiper system
Perform wiper electrical connections through the 3 pins terminal block shown in picture.

Model with wiper voltage 24VAC and 240VAC

Permanent 24VAC or 240VAC voltage must be connected between pin1 (line) and pin2 (neutral) of the terminal block.
To activate the wiper, connect the pin1 (line) to the pin3. A normally open switch, connected between pin1 and pin3, can be used for this operation.
When the voltage is connected to pin3, the wiper works and continues to work until the voltage is disconnected, then wiper parks itself to its initial position.

Model with wiper voltage 24 VDC

Permanent 24VDC voltage must be connected between pin1 (GND) and pin2 (+24V) of the terminal block.
To activate the wiper, connect the pin1 (GND) to the pin3. A normally open switch, connected between pin1 and pin3, can be used for this operation.
When pin1 and pin3 are connected together (to GND), the wiper works and continues to work until pin3 is disconnected, then the wiper parks itself to its initial position.

