

NEXT PTZ AVIGILON

INNOVATIVE EXPLOSIONPROOF PTZ CAMERA STATION

HAZARDOUS AREA

- **INNOVATIVE PRODUCT, BEST IN CLASS TECHNOLOGY**
- ATEX/IECEX/UKCA/INMETRO EXPLOSIONPROOF PTZ FOR HAZARDOUS LOCATIONS
- AISI316L STAINLESS STEEL CONSTRUCTION
- CERTIFICATION TEMPERATURE -60°C +80°C
- POWERED BY **AVIGILON 2.0C-H5A-B1**, DAY/NIGHT FULL HD, 18X OPTICAL ZOOM
- EDGE RECORDING
- INTEGRATED WINDOW WIPER
- VERY LOW POWER CONSUMPTION
- EASY MAINTENANCE
- IP66/67/68/69, NEMA 4X
- OPTIONAL BUILT-IN FIBER MEDIA CONVERTER
- OPTIONAL BUILT-IN IP OVER COAX CONVERTER
- OPTIONAL BUILT-IN 120VAC OR 230VAC POWER SUPPLY
- H2-READY



avigilon™



TECHNICAL SPECIFICATIONS

GENERAL & MECHANICAL

Dimensions	See dimensions drawings
Operating Temperature	-60° +60°C, +75°C peak (-76°F +140°F, +167°F peak)
Construction	AISI316L Stainless Steel
Finish	Electro-polished
Mounting	4x Ø11 on 195 PCD
Cable entries	1x M25x1,5 (second cable entry available on demand)
Wiper	Yes
Pan Angle	360° (continuous rotation)
Pan Speed	0 – 40°/second
Pan Torque	20Nm (limited with safety device)
Tilt Angle	180° (+/-90°)
Tilt Speed	0 – 20°/second
Tilt Torque	20Nm (limited with safety device)
Rotation angle	Electronically adjustable limit switches
Backlash	<0,1°
Max preset accuracy	0,04°
Control protocol	Pelco D (RS485)
Weight	Unit: 31kg / Package: 36kg

ELECTRICAL

Temperature Climatization	
- Camera Housing	T[°C] ON = 12 ± 4°C, T[°C] OFF = 20 ± 3°C
- Gear motors	Electronically controlled de-icing
Available voltages	24VAC, 120VAC, 230VAC (+/-10%) 24VDC available on request
Power consumption	10W min (stationary and de-icing/heater/wiper off), 130W MAX

CERTIFICATIONS

Ingress Protection	EN 60529 (IP66/IP67/IP68/IP69), NEMA 4X
---------------------------	---

Rating	II 2 G Ex db IIC T6/5/4 Gb -60°C ≤ Tamb ≤ +60/75/80°C II 2 D Ex tb IIIC T85/100/135°C Db -60°C ≤ Tamb ≤ +60/75/80°C
Vibrations and Shock	EN/IEC 60068-2-6; EN/IEC 60068-2-27; DNV-CG-0339
ATEX/UKEX Standards	EN 60079-0; EN 60079-1; EN 60079-31
IECEX Standards	IEC 60079-0; IEC 60079-1; IEC 60079-31
EMC	EN 55035; EN/IEC 61000-6-4; EN/IEC 61000-3-2; EN/IEC 61000-3-3; EN/IEC 61000-6-2; CISPR-32; CISPR-35; DNV-CG-0339
LVD	EN/IEC 62368-1
FCC	FCC part 15B
RoHS	2011/65/EU + 2015/863/EU (RoHS 3)
WEEE	2012/19/EU
INMETRO	ABNT NBR IEC 60079-0; ABNT NBR IEC 60079-1; ABNT NBR IEC 60079-31

VIDEO/CAMERA

Sensor	1/2.8" progressive scan CMOS
Resolution	1920x1080
Compression	H.264 HDSM SmartCodec, H.265 HDSM SmartCodec, Motion JPEG
Streaming	Multi-stream H.264, Multi-stream H.265, Motion JPEG
Frame Rate	(50 Hz/60 Hz): 25 fps/30 fps
Sensitivity	0.039 lux in color mode, 0.02 lux in monochrome mode
Shutter Speed	Automatic, Manual (1/7 to 1/8196 sec)
White Balance	Automatic, Manual
Dynamic range	WDR
Lens	18x Autofocus Optical Zoom, 4.7-84.6mm
Analytics	NEXT-GENERATION VIDEO ANALYTICS: Expanded object classifications and more accurate detection in crowded scenes so you can detect and act faster.
Event Triggers	Analytics, Tamper Detection, Objects in Area, Object Loitering, Objects Crossing Beam, Object Appears or Enters Area, Direction Violated

INNOVATIVE EXPLOSIONPROOF PTZ CAMERA STATION

Edge Recording	microSD/microSDHC/microSDXC slot
Noise Reduction	3D Noise Reduction
Iris	Automatic, Open, Closed

(*) for more updated information pls visit original web site of camera manufacturer

NETWORK

Interface	100BASE-TX, RJ45 Connector, CAT5e Cabling
Security	Password protection, HTTPS encryption, digest authentication, WS authentication, user access log, 802.1x port based authentication
ONVIF	ONVIF compliance version 1.02, 2.00, Profile S, Profile T, Profile G
Protocols	IPv6, IPv4, HTTP, HTTPS, SOAP, DNS, NTP, RTSP, RTCP, RTP, TCP, UDP, IGMP, ICMP, DHCP, Zeroconf, ARP, RTP/UDP, RTP/UDP multicast, RTP/RTSP/TCP, RTP/RTSP/HTTP/TCP, RTP/RTSP/HTTPS/TCP, HTTP, SNMP v2c, SNMP v3

(*) for more updated information pls visit original web site of camera manufacturer

FIBER MEDIA CONVERTER

Interface	100 Base-FX/1000BASE-X
Cabling	Singlemode (9/125 μm) /two fibers/SC connector
Maximum Distance	20km
Wavelength	1310 nm

IP OVER COAXIAL CONVERTER

Interface	10/100 Base-TX over Coaxial Cable
Bandwidth	Up to 95Mbps downlink/uplink
Maximum Distance	1800m
Technology	Broadband over Power Lines (BPL)
Interference Prevention	IEEE 1901-2010 Inter-System Protocol ISP

MODELS

TXP1TA01-IP-S	New Generation Explosionproof PTZ IP camera station, Avigilon H5 18x, 24VAC
TXP2TA01-IP-S	New Generation Explosionproof PTZ IP camera station, Avigilon H5 18x, 120VAC
TXP3TA01-IP-S	New Generation Explosionproof PTZ IP camera station, Avigilon H5 18x, 230VAC
TXP1TA01-SM-S	New Generation Explosionproof PTZ IP camera station, Avigilon H5 18x. SM FO Media converter, 24VAC
TXP2TA01-SM-S	New Generation Explosionproof PTZ IP camera station, Avigilon H5 18x. SM FO Media converter, 120VAC
TXP3TA01-SM-S	New Generation Explosionproof PTZ IP camera station, Avigilon H5 18x. SM FO Media converter, 230VAC
TXP1TA01-CX-S	New Generation Explosionproof PTZ IP camera station, Avigilon H5 18x. IP over COAXIAL converter, 24VAC
TXP2TA01-CX-S	New Generation Explosionproof PTZ IP camera station, Avigilon H5 18x. IP over COAXIAL converter, 120VAC
TXP3TA01-CX-S	New Generation Explosionproof PTZ IP camera station, Avigilon H5 18x. IP over COAXIAL converter, 230VAC

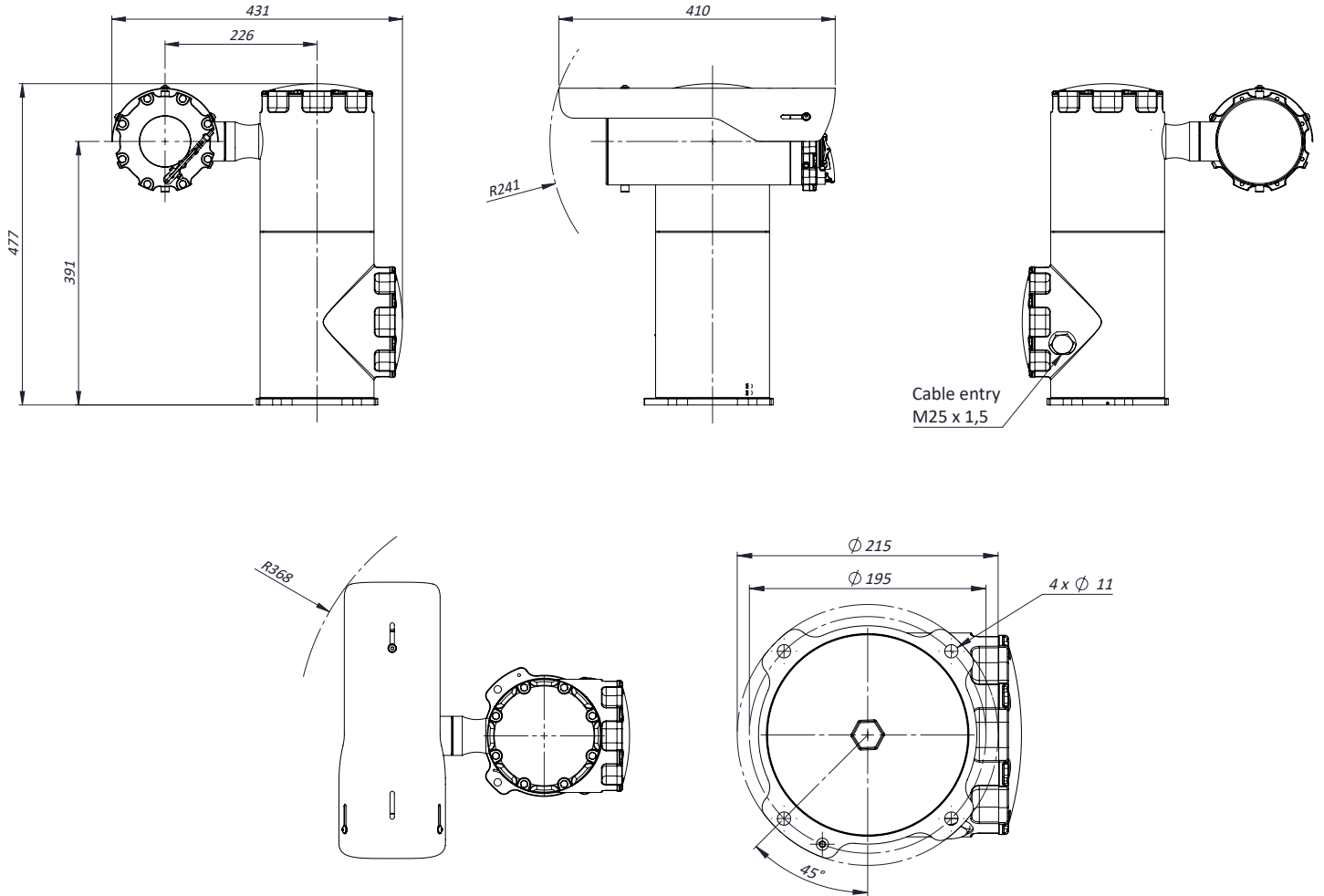
PRE-ASSEMBLED CABLE TAILS

EXACCTF3-B	3 meters armoured composite cable tail (power, Ethernet, data) with 2x M25 barrier nickel plated brass glands. For PTZ camera
EXACCTF3-D	3 meters armoured composite cable tail (power, data, fiber optic) with 2x M25 barrier nickel plated brass glands. Fiber termination: SC. For PTZ camera
EXACCTF5-B	5 meters armoured composite cable tail (power, Ethernet, data) with 2x M25 barrier nickel plated brass glands. For PTZ camera
EXACCTF5-D	5 meters armoured composite cable tail (power, data, fiber optic) with 2x M25 barrier nickel plated brass glands. Fiber termination: SC. For PTZ camera
EXACCTF10-B	10 meters armoured composite cable tail (power, Ethernet, data) with 2x M25 barrier nickel plated brass glands. For PTZ camera
EXACCTF10-D	10 meters armoured composite cable tail (power, data, fiber optic) with 2x M25 barrier nickel plated brass glands. Fiber termination: SC. For PTZ camera

ACCESSORIES

SSBK-L	Wall mounting bracket
---------------	-----------------------

DIMENSIONS



The unit cannot be installed upside-down nor horizontally

*This is only an example of integration of Avigilon camera in Tecnovideo products.
Avigilon Trademark and company logos, marks, product names and emblems are registered trademarks and belong to Avigilon Corporation.*

Dimensions in millimetres - Tolerances according QMS - Design and products specifications subject to change without notice - rev. 20230712