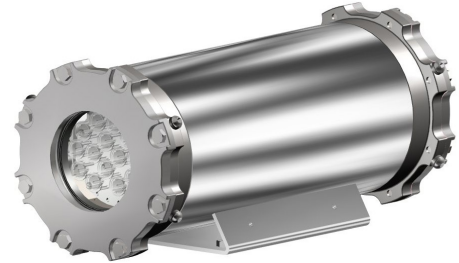


NEXT IR ILLUMINATOR

INNOVATIVE EXPLOSIONPROOF IR LED ILLUMINATOR

HAZARDOUS AREA

- **INNOVATIVE PRODUCT, BEST IN CLASS TECHNOLOGY**
- CLASS1/DIV1 EXPLOSIONPROOF IR LED ILLUMINATOR FOR HAZARDOUS LOCATIONS
- AISI316L STAINLESS STEEL CONSTRUCTION
- CERTIFICATION TEMPERATURE -76°F +140°F
- INFRARED LED TECHNOLOGY, 850NM
- BEAM PATTERNS 15° AND 34°
- IP68/69, NEMA 4X
- OPTIONAL SUNSHIELD AVAILABLE



TECHNICAL SPECIFICATIONS

GENERAL & MECHANICAL

Dimensions	See dimensions drawings
Operating Temperature	-60° +60°C (-76°F +140°F)
Construction	AISI316L Stainless Steel
Finish	Electro-polished
Mounting	4x M5 on 101,6 PCD 4x M6 on 90x130
Cable entries	2xM25x1.5 and 2x 3/4in (adapter)
Weight	Unit: 17lb/Package: 21lb

ELECTRICAL

Available voltages	24VAC/DC, 120VAC (+/-10%)
Activation	Open collector/Dry contact/External photocell
Output	Output, to provide status feedback
STROBO command	To synchronize video signal with FPS duty cycle
Temperature protection	Automatic power reduction (>140°F) Automatic switch OFF (>176°F)
Power consumption	25W

CERTIFICATIONS

Ingress Protection	EN 60529 (IP68/IP69), NEMA 4X
Rating	Class I, Division 1, Groups A, B, C and D T5/T4 -50°C ≤ Tamb ≤ +40°C/60°C (only for Canada) Class I, Division 1, Groups B, C and D T5/T4 -25°C ≤ Tamb ≤ +40°C/60°C (for US/Canada) Class II/III, Division 1, Groups E, F and G T5/T4 -40°C ≤ Tamb ≤ +40°C/60°C (for US/Canada)
Vibrations and Shock	EN/IEC 60068-2-6; EN/IEC 60068-2-27; DNV-CG-0339
North American Standards	FM Class 3615; FM Class 3810; ANSI/UL 61010-1; ANSI/UL 60079-0; ANSI/UL 60079-1; ANSI/ISA 60079-31; ANSI/UL 50E; ANSI/IEC 60529 CSA C22.2 No. 0.4; CSA C22.2 No. 0.5; CAN/CSA C22.2 No. 61010-1; CAN/CSA-C22.2 No. 60079-0; CAN/CSA-C22.2 No. 60079-1; CAN/CSA-C22.2 No. 60079-31; CSA C22.2 No. 94.2; CAN/CSA C22.2 No. 60529

EMC	EN 55035; EN/IEC 61000-6-4; EN/IEC 61000-3-2; EN/IEC 61000-3-3; EN/IEC 61000-6-2; CISPR-32; CISPR-35; DNV-CG-0339
LVD	EN/IEC 62368-1
FCC	FCC part 15B
RoHS	2011/65/EU + 2015/863/EU (RoHS 3)
WEEE	2012/19/EU

LED ILLUMINATOR

LED	14x SMD LED
Wavelength	850nm
Beam patterns	15° or 34°

MODELS

TXLUS2-15LED	AISI316L explosion-proof Infrared LED illuminator, 15 degrees, 120VAC
TXLUS6-15LED	AISI316L explosion-proof Infrared LED illuminator, 15 degrees, 24VAC/DC
TXLUS2-34LED	AISI316L explosion-proof Infrared LED illuminator, 34 degrees, 120VAC
TXLUS6-34LED	AISI316L explosion-proof Infrared LED illuminator, 34 degrees, 24VAC/DC

Optional sunshield available on request

ACCESSORIES

SSBK-M	Wall mounting bracket
SSPM-M	Pole mount adapter for SSBK-M
SSPTM-M	Top pole mount adapter
SSDM-M	Adapter to mount a TSL illuminator and a TSF camera on a single SSBK-M bracket

DIMENSIONS

