

NEXT FIXED WITH BOSCH CAMERA

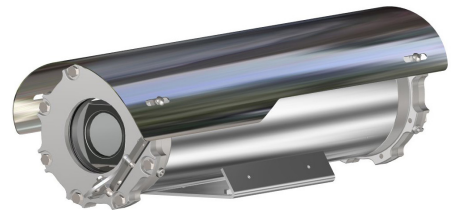
INNOVATIVE EXPLOSIONPROOF CAMERA STATION

HAZARDOUS AREA

POWERED BY



- **INNOVATIVE PRODUCT, BEST IN CLASS TECHNOLOGY**
- ATEX/IECEX/UKCA/INMETRO EXPLOSIONPROOF CAMERA FOR HAZARDOUS LOCATIONS
- AISI316L STAINLESS STEEL CONSTRUCTION
- CERTIFICATION TEMPERATURE -60°C +80°C
- INTEGRATED BOSCH DINION IP STARLIGHT CAMERA AND VARIFOCAL LENS
- EDGE RECORDING
- OPTIONAL WINDOW WIPER
- IP66/67/68/69, NEMA 4X
- OPTIONAL BUILT-IN FIBER MEDIA CONVERTER
- OPTIONAL BUILT-IN IP OVER COAXIAL CONVERTER
- OPTIONAL BUILT-IN 120VAC OR 230VAC POWER SUPPLY
- H2-READY
- BVMS COMPATIBLE



TECHNICAL SPECIFICATIONS

GENERAL & MECHANICAL

Dimensions	See dimensions drawings
Operating Temperature	-60° +60°C, +75°C peak (-76°F +140°F, +167°F peak)
Construction	AISI316L Stainless Steel
Finish	Electro-polished
Mounting	4x M5 on 101,6 PCD 4x M6 on 90x130
Cable entries	2x M25 x1,5
Wiper	Optional
Weight	Unit: 12,7 Kg / Package: 14,2 Kg (version with wiper)

ELECTRICAL

Temperature Climatization	T[°C] ON = 12 ± 4°C, T[°C] OFF = 20 ± 3°C
Available voltages	24VAC, 120VAC, 230VAC (+/-10%) 24VDC or PoE available on request
Power consumption	40W MAX

CERTIFICATIONS

Ingress Protection	EN 60529 (IP66/IP67/IP68/IP69), NEMA 4X
Rating	II 2 G Ex db IIC T6/5/4 Gb -60°C ≤ Tamb ≤ +60/75/80°C II 2 D Ex tb IIIC T85/100/135°C Db -60°C ≤ Tamb ≤ +60/75/80°C
Vibrations and Shock	EN/IEC 60068-2-6; EN/IEC 60068-2-27; DNV-CG-0339
ATEX/UKCA Standards	EN 60079-0; EN 60079-1; EN 60079-31
IECEX Standards	IEC 60079-0; IEC 60079-1; IEC 60079-31
EMC	EN 55035; EN/IEC 61000-6-4; EN/IEC 61000-3-2; EN/IEC 61000-3-3; EN/IEC 61000-6-2; CISPR-32; CISPR-35; DNV-CG-0339
LVD	EN/IEC 62368-1
FCC	FCC part 15B

RoHS	2011/65/EU + 2015/863/EU (RoHS 3)
WEEE	2012/19/EU
INMETRO	ABNT NBR IEC 60079-0; ABNT NBR IEC 60079-1; ABNT NBR IEC 60079-31

CAMERA

LENS MODEL	DINION IP Starlight CAMERA SERIES		
	6000 HD (6)	7000 HD (7)	8000 HD (8)
LVF-5003C-P2713 (A)	6A	7A	/
LVF-5005C-S4109 (D)	6D	7D	8D

To order the camera and lens to be integrated in the housing, please specify the related number (C-camera series) and letter (L-lens model) in the ordering code (see MODELS).

Example: For the housing with integrated DINION IP Starlight 7000 HD (7) and LVF-S4109 (D) the ordering code is: TXFTB7Dxxxxxx

(*) for more updated information pls visit original web site of camera manufacturer

FIBER MEDIA CONVERTER

Interface	100 Base-FX/1000BASE-X
Cabling	Singlemode (9/125 μm) /two fibers/SC connector
Maximum Distance	20km
Wavelength	1310 nm

IP OVER COAXIAL CONVERTER

Interface	10/100 Base-TX over Coaxial Cable
Bandwidth	Up to 95Mbps downlink/uplink
Maximum Distance	1800m
Technology	Broadband over Power Lines (BPL)
Interference Prevention	IEEE 1901-2010 Inter-System Protocol ISP

INNOVATIVE EXPLOSIONPROOF FIXED CAMERA STATION

MODELS

TXF2TBxy-IP-M	New Generation Explosionproof FIXED IP camera station with Bosch Dinion, 120VAC
TXF3TBxy-IP-M	New Generation Explosionproof FIXED IP camera station with Bosch Dinion, 230VAC
TXF1TBxy-IP-M	New Generation Explosionproof FIXED IP camera station with Bosch Dinion, 24VAC
TXF2TBxyW-IP-L	New Generation Explosionproof FIXED IP camera station with Bosch Dinion, wiper, 120VAC
TXF3TBxyW-IP-L	New Generation Explosionproof FIXED IP camera station with Bosch Dinion, wiper, 230VAC
TXF1TBxyW-IP-L	New Generation Explosionproof FIXED IP camera station with Bosch Dinion, wiper, 24VAC

- X: 6 = Dinion 6000, 7 = Dinion 7000, 8 = Dinion 8000
 - Y: A = LVF-5003C-P2713 Lens, D = LVF-5005C-S4109 lens
 - for fiber media converter replace the suffix "IP" with "SM", ex. TXF2TBxy-SM
 - for IP over COAXIAL converter replace the suffix "IP" with "CX", ex. TXF2TBxy-CX
 - All the above models include sunshield and heater

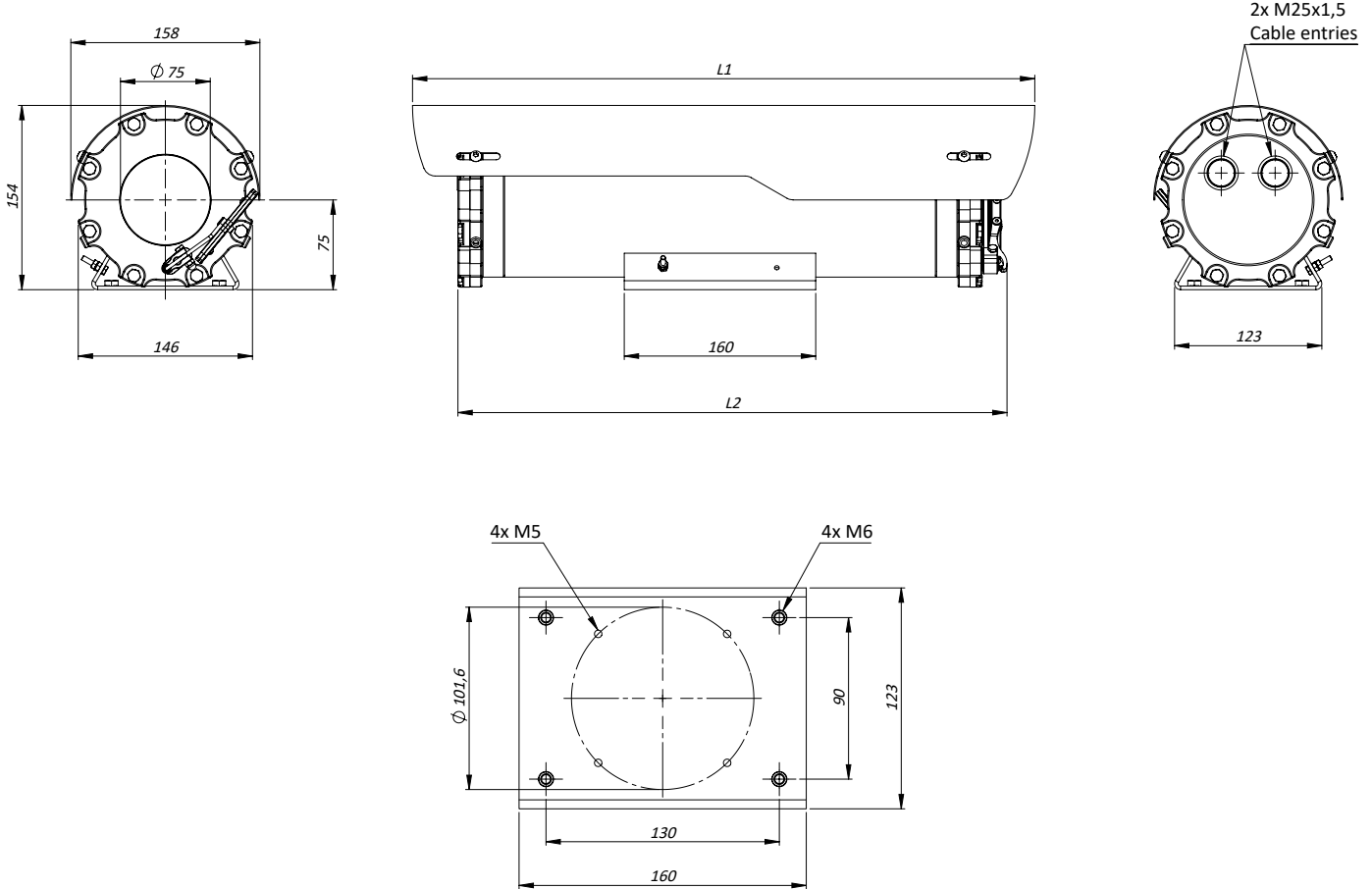
PRE-ASSEMBLED CABLE TAILS

EXACCTF3-A	3 meters armored composite cable tail (power, Ethernet, data) with 2x M25 barrier nickel plated brass glands
EXACCTF3-C	3 meters armored composite cable tail (power, data, fiber optic) with 2x M25 barrier nickel plated brass glands. Fiber termination: SC
EXACCTF5-A	5 meters armored composite cable tail (power, Ethernet, data) with 2x M25 barrier nickel plated brass glands
EXACCTF5-C	5 meters armored composite cable tail (power, data, fiber optic) with 2x M25 barrier nickel plated brass glands. Fiber termination: SC
EXACCTF10-A	10 meters armored composite cable tail (power, Ethernet, data) with 2x M25 barrier nickel plated brass glands
EXACCTF10-C	10 meters armored composite cable tail (power, data, fiber optic) with 2x M25 barrier nickel plated brass glands. Fiber termination: SC

ACCESSORIES

SSBK-M	Wall mounting bracket
SSPM-M	Pole mount adapter for SSBK-M
SSPTM-M	Top pole mount adapter
SSDM-M	Adapter to pair with IR LED illuminator on a single SSBK-M bracket

DIMENSIONS



MAX EXTERNAL LENGTH

Model	L1 [mm]	L2 [mm]
TXFTBxy-IP-M	520	440
TXFTBxy-IP-L	660	580
TXFTBxyW-IP-M	520	460
TXFTBxyW-IP-L	660	600

The unit cannot be installed upside-down nor horizontally

*This is only an example of integration of Bosch Dinion cameras in Tecnovideo products.
Bosch Trademark and company logos, marks, product names and emblems are registered trademarks and belong to Robert Bosch GmbH.*

Dimensions in millimetres - Tolerances according QMS - Design and products specifications subject to change without notice - rev. 20240122