

# TECNOVIDEO

CCTV SYSTEMS AND ACCESSORIES

## EXPT SERIES

EXPLOSIONPROOF PAN & TILT UNIT

HAZARDOUS AREA

- HAZARDOUS LOCATIONS
- AISI316L STAINLESS STEEL CONSTRUCTION
- CERTIFICATION TEMPERATURE -40°C +75°C
- 360° CONTINUOUS ROTATION, VARIABLE SPEED
- MAXIMUM LOAD 25 KG
- SUITABLE FOR THIRD PARTY EXPLOSIONPROOF CAMERA HOUSINGS
- OPTIONAL BUILT-IN FIBER MEDIA CONVERTER
- OPTIONAL BUILT-IN 115VAC or 230VAC POWER SUPPLIES



## TECHNICAL SPECIFICATIONS

### GENERAL & MECHANICAL

<b>Dimensions</b>	See drawings next page
<b>Operating Temperature</b>	-40°C +60°C, peak +75°C (-40°F +140°F, +167°F peak)
<b>Construction</b>	AISI316L Stainless Steel
<b>Finish</b>	Electro-polished
<b>Mounting</b>	4XØ11 on 195 PCD
<b>Cable Outputs</b>	2 M20x1,5 cable outputs (to the external housing)
<b>Cable entries</b>	1 M25x1,5 cable entry (base)
<b>Pan Angle</b>	360° (continuous rotation)
<b>Pan Speed</b>	0 – 40°/second
<b>Pan Torque</b>	20Nm (limited with safety device)
<b>Tilt Angle</b>	180° (+/-90°)
<b>Tilt Speed</b>	0 – 20°/second
<b>Tilt Torque</b>	20Nm (limited with safety device)
<b>Rotation angle</b>	Electronically adjustable
<b>Backlash</b>	<0,1°
<b>Max preset accuracy</b>	0,04°
<b>Maximum load</b>	25 kg
<b>Control protocol</b>	Pelco D (via RS485)
<b>Weight</b>	Unit: 29kg Package: 30kg

### ELECTRICAL

<b>Supply voltage</b>	24VAC, 230VAC (+/-10%)
<b>Power consumption</b>	9W (stationary), 70W MAX

### CERTIFICATIONS

<b>Ingress Protection Rating</b>	EN 60529 (IP66/IP67) ⊕ II 2 G Ex db op pr IIC T6 Gb -40°C ≤ Tamb ≤ +60°C ⊕ II 2 D Ex tb IIIC T85°C Db -40°C ≤ Tamb ≤ +60°C ⊕ II 2 G Ex db op pr IIB T5 Gb -40°C ≤ Tamb ≤ +75°C ⊕ II 2 D Ex tb IIIC T100°C Db -40°C ≤ Tamb ≤ +75°C
<b>Vibrations</b>	EN/IEC 60068-2-6; EN/IEC 60068-2-27
<b>ATEX/UKEX Standards</b>	EN 60079-0; EN 60079-1; EN 60079-28; EN 60079-31
<b>IECEX Standards</b>	IEC 60079-0; IEC 60079-1; IEC 60079-28; IEC 60079-31
<b>EMC</b>	EN 50130-4; EN 55035; EN/IEC 61000-6-2; EN/IEC 61000-6-4
<b>LVD</b>	EN 60950-1; EN 60950-22
<b>RoHS</b>	2011/65/EU + 2015/863/EU (RoHS 3)
<b>WEEE</b>	2012/19/EU

### MODELS

<b>EXPT-CR/24</b>	Stand-alone Pan & Tilt unit, 24VAC
<b>EXPT-CR/230</b>	Stand-alone Pan & Tilt unit, 230VAC

Available upon request: Built-in Fiber Media Converter

### PRE-ASSEMBLED CABLE TAILS

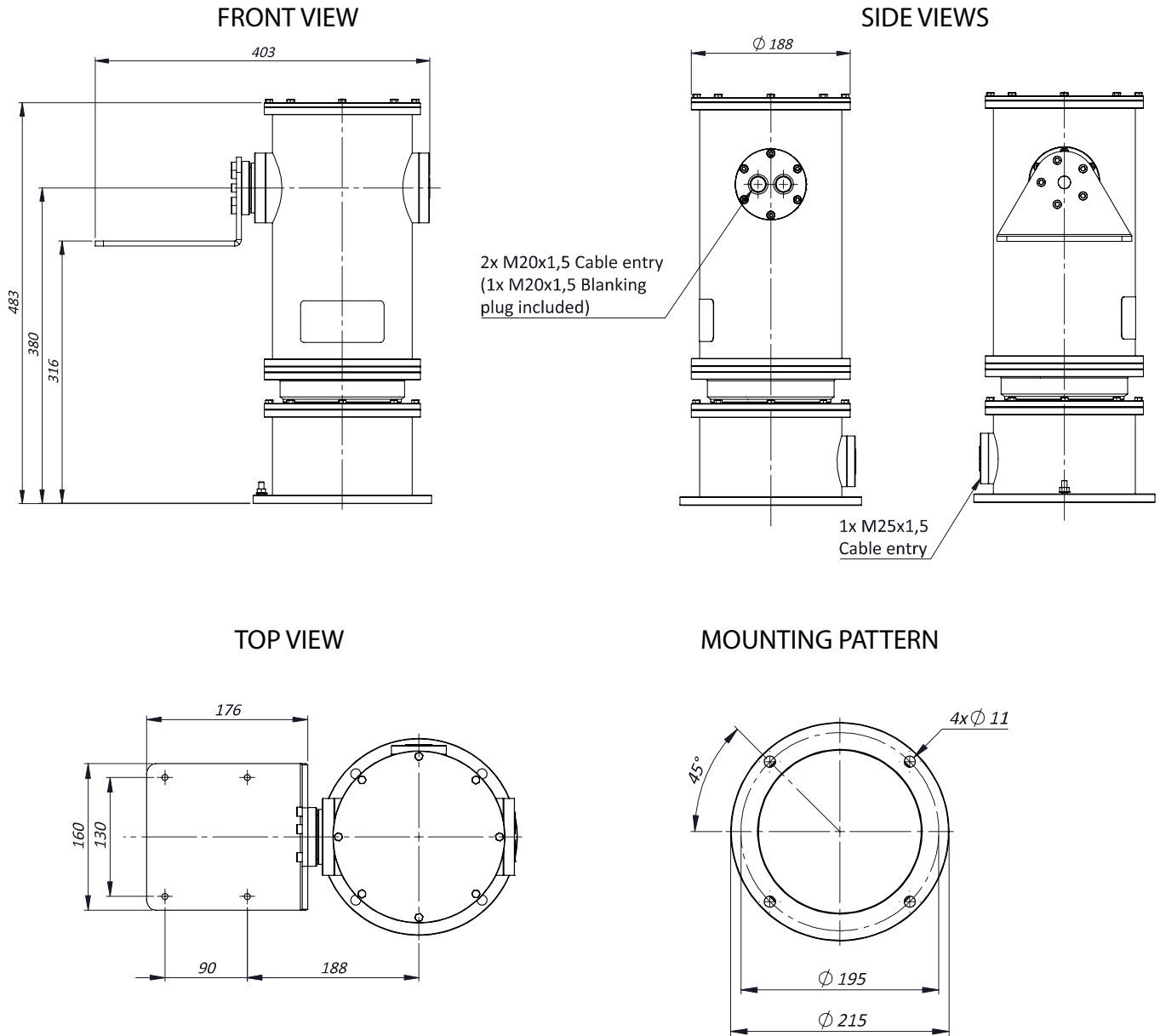
<b>EXACCTF3-B</b>	3 meters armoured composite cable tail (power, Ethernet, data) with 2x M25 barrier nickel plated brass glands. For PTZ camera
<b>EXACCTF3-D</b>	3 meters armoured composite cable tail (power, data, fiber optic) with 2x M25 barrier nickel plated brass glands. Fiber termination: SC. For PTZ camera
<b>EXACCTF5-B</b>	5 meters armoured composite cable tail (power, Ethernet, data) with 2x M25 barrier nickel plated brass glands. For PTZ camera
<b>EXACCTF5-D</b>	5 meters armoured composite cable tail (power, data, fiber optic) with 2x M25 barrier nickel plated brass glands. Fiber termination: SC. For PTZ camera
<b>EXACCTF10-B</b>	10 meters armoured composite cable tail (power, Ethernet, data) with 2x M25 barrier nickel plated brass glands. For PTZ camera
<b>EXACCTF10-D</b>	10 meters armoured composite cable tail (power, data, fiber optic) with 2x M25 barrier nickel plated brass glands. Fiber termination: SC. For PTZ camera

### ACCESSORIES

<b>SSBK-L</b>	Wall mounting bracket
---------------	-----------------------

## EXPLOSIONPROOF PAN & TILT UNIT

### DIMENSIONS



### MAX EXTERNAL LENGTH

Model	L1 [mm] Height	L2 [mm] Width
EXPT-CR/24	483	403
EXPT-CR/230	483	403

*The unit cannot be installed upside-down nor horizontally*