

AISI316L STAINLESS STEEL CONSTRUCTION
SPECIFICALLY DESIGNED FOR TUNNEL INSTALLATIONS
ELONGATED FRONT TUBE PROTECTION
DIRT RESISTANT WINDOW
INTEGRAL WALL MOUNTING BRACKET
EASY INSTALLATION AND MAINTENANCE
WEATHERPROOF STANDARD IP66/IP67



118 CAMERA HOUSING FOR TUNNEL APPLICATIONS

TECHNICAL SPECIFICATIONS

GENERAL & MECHANICAL

Dimensions	See drawings next page
Operating Temperature	-20° +60°C (-4° +140° F)
Construction	AISI316L Stainless Steel
Finish	Electro-polished
Mounting	See drawings next page
Cable entries	2 M20x1,5 nickel plated brass cable glands (included) Standard cable diameter 5-10mm
Weight	5,5 kg

ELECTRICAL

Thermostatically controlled heater	
T[°C] ON	12 ± 4°C, T[°C] OFF = 20 ± 3°C
Available voltages	24VUC(24V~/VDC), 230V~ (+/-10%)
Power consumption	8W

CERTIFICATIONS

Ingress Protection(EN 60529)	IP66/IP67
EMC	EN 61000-6-3:2007; EN 50130-4:1995 + A1:1998 + A2:2003
LVD	EN 60950-1:2006 + A11:2009
RoHS	2011/65/EU
WEEE	2012/19/EU

MODELS

118	Housing
118H/24	Housing + heater. Supply voltage: 24VUC
118H/230	Housing + heater. Supply voltage: 230V~
118SH/24	Housing + sunshield + heater. Supply voltage: 24VUC
118SH/230	Housing + sunshield + heater. Supply voltage: 230V~

All the above models include a wall mounting bracket with swivel joint and have a dirt resistant window.

Note: Upon request 118 series housing is available in PoE version (upon approval of camera and lens in use)

MOUNTING ACCESSORIES

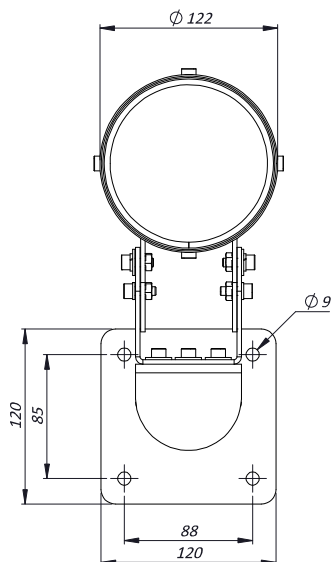
SSPM118	Pole mount adapter for 118 Series. Diam. 80mm -115mm
----------------	--

ACCESSORIES AND SPARE PARTS

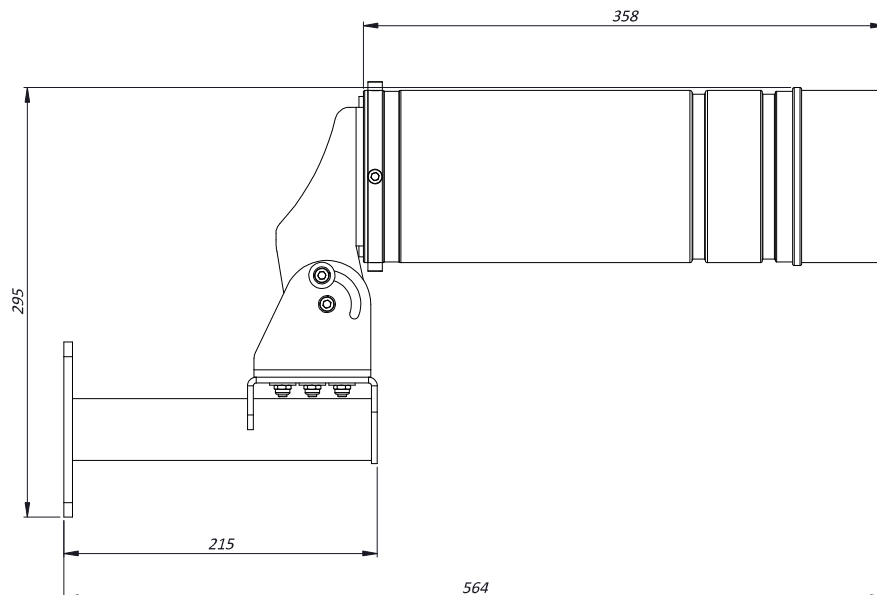
MK118	Maintenance kit with O-Ring seals, cable gland, screws, desiccant bags
SK118	Sunshield kit

DIMENSIONS

FRONT VIEW



SIDE VIEW



MAX INTERNAL DIMENSIONS [mm]: 84x65x210